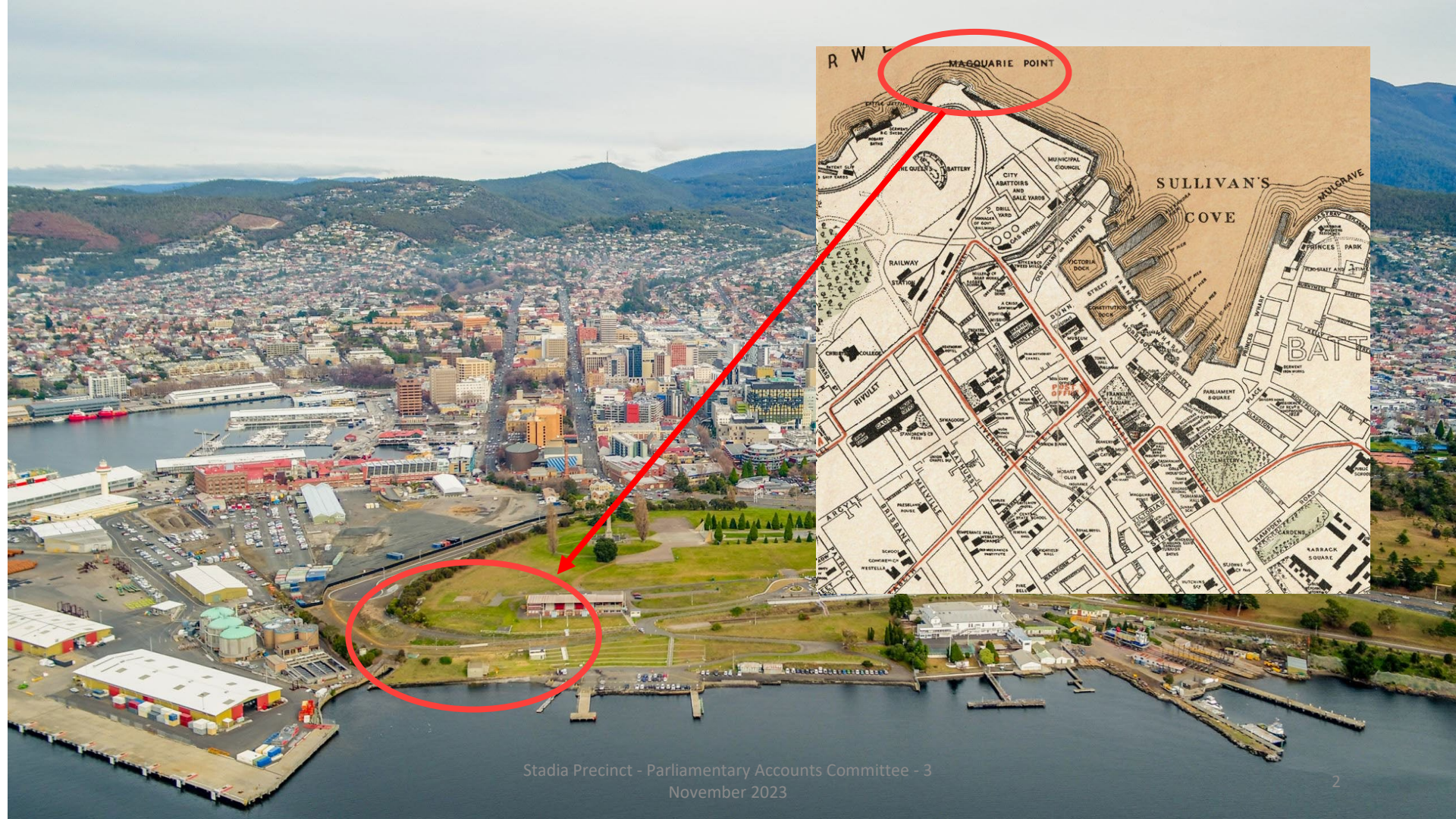




stadia precinct

A ONCE IN A LIFETIME
OPPORTUNITY FOR TASMANIA









TASMANIAN COMMUNITY PRECINCT APPROACH

CONCEPT APPROACH FROM
BRIDGE OF REMEMBRANCE

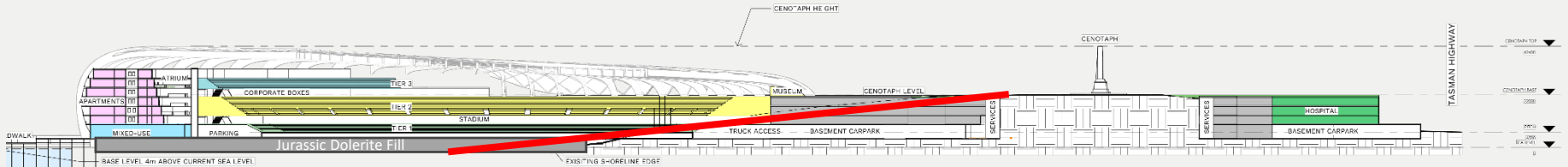
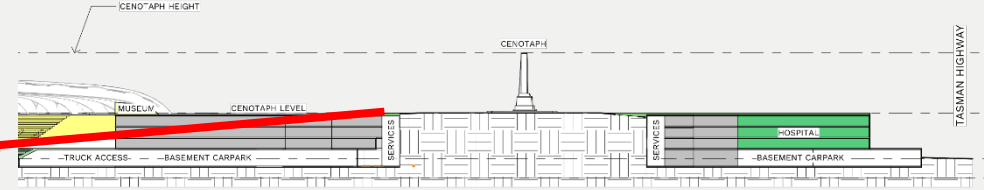


TASMANIAN COMMUNITY PRECINCT APPROACH

CONCEPT SITE SECTION

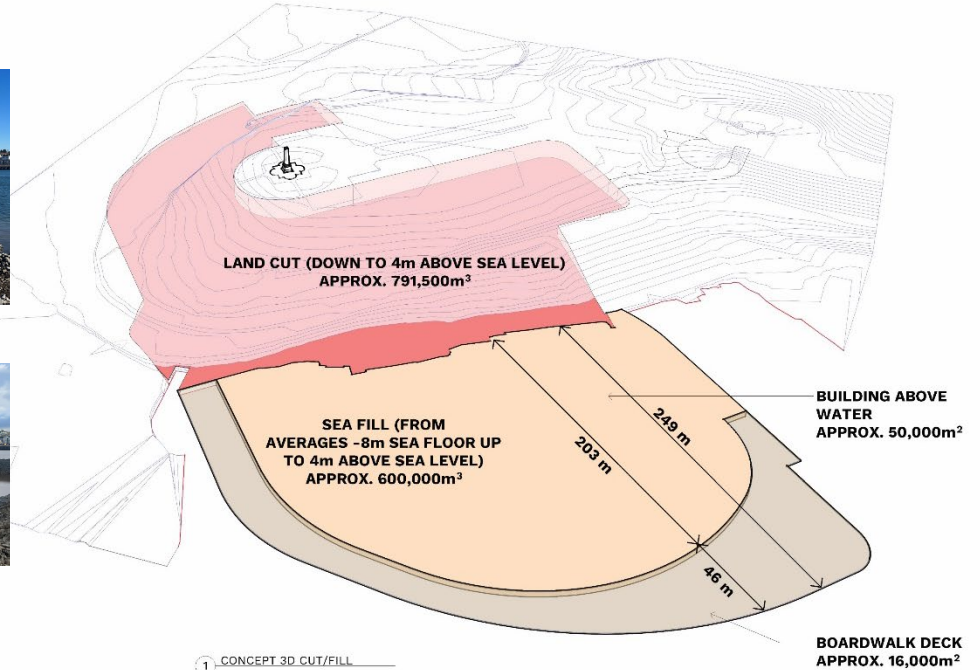
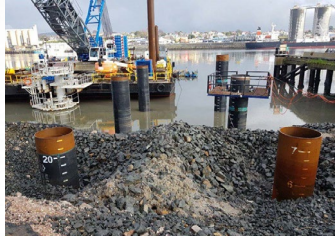
Stadia Precinct Experience

- The team to be assembled to deliver this project would consist of Tier 1 Builders from both Tasmania and Victoria.
- Previous experience on the site for the Hospital Bid.
- Stadium Design and Construction would be undertaken by the team that delivered the Homebush Stadium for the Sydney Olympics and the team that delivered the now named Marvel Stadium in Melbourne's Docklands and the team that delivered Optus Stadium in Perth.
- The team would be expanded with both US and UK Stadium design teams that have experience in "MULTI-PURPOSE" Venue Design and Management to ensure the maximum revenues are gained by the Stadium and critically the Stadium could become an asset for the Tasmanian Public.
- Sustainability, Technology and Safety Focus.



HOBART STADIUM CONCEPT

LAND CUT & RIVER FILL

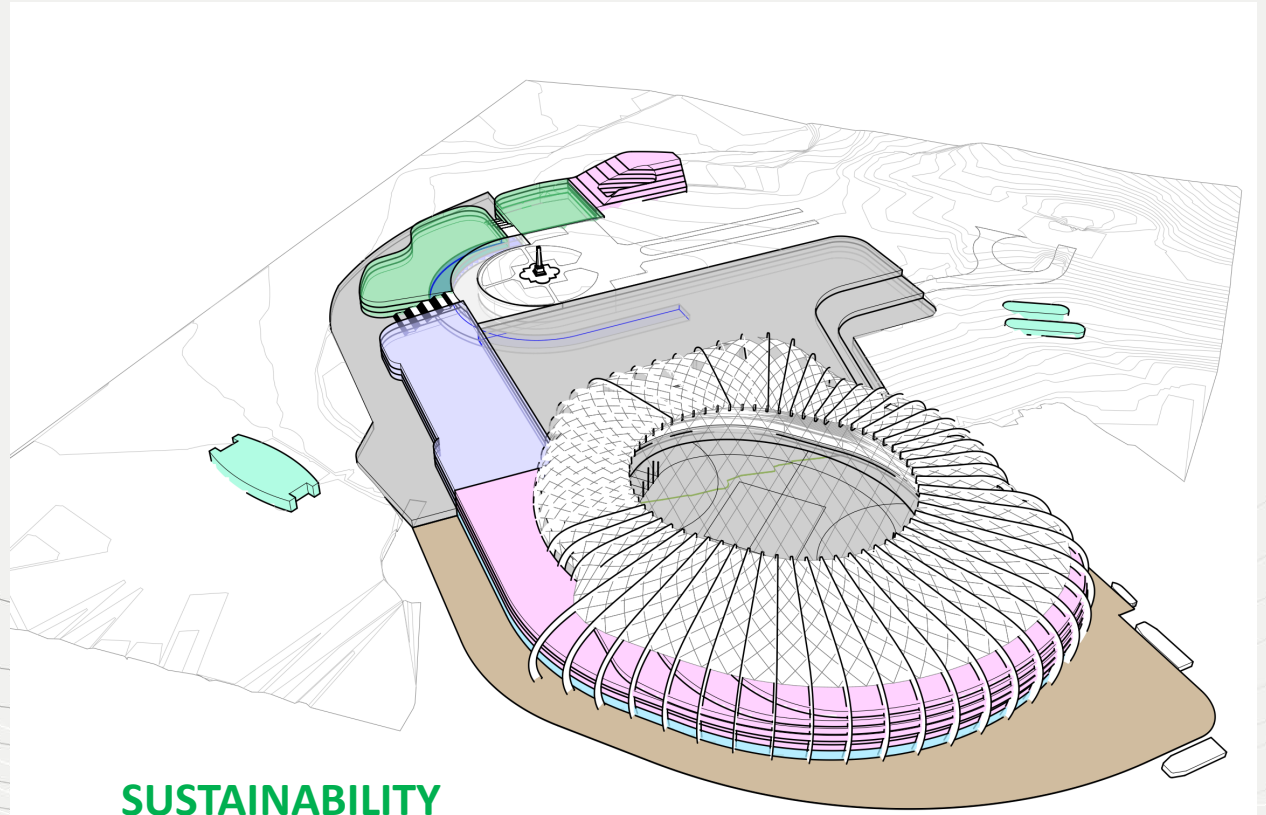


TASMANIAN COMMUNITY PRECINCT APPROACH

CONCEPT 3D MASSING

Base Overview of the Development

- Residential Accommodation
- Social and Affordable Housing
- New Hotel[s]
- New Private Hospital & other Potential Hospital Facilities
- Headquarters for the RSL and RHRA
- Multipurpose "ALL-WEATHER" Stadium with retractable polymer roof
- Commercial Tenancies
- Retail and Restaurant Complex
- Ferry Terminal
- "Lest We Forget" Museum
- Transport Interchange
- Respite/Palliative Care Centre
- Derwent Power Station – Housing pumping system for sewerage transfer to Self-Point and New Energy System for the Sporting and Lifestyle Precinct.
- Others to follow....



SUSTAINABILITY

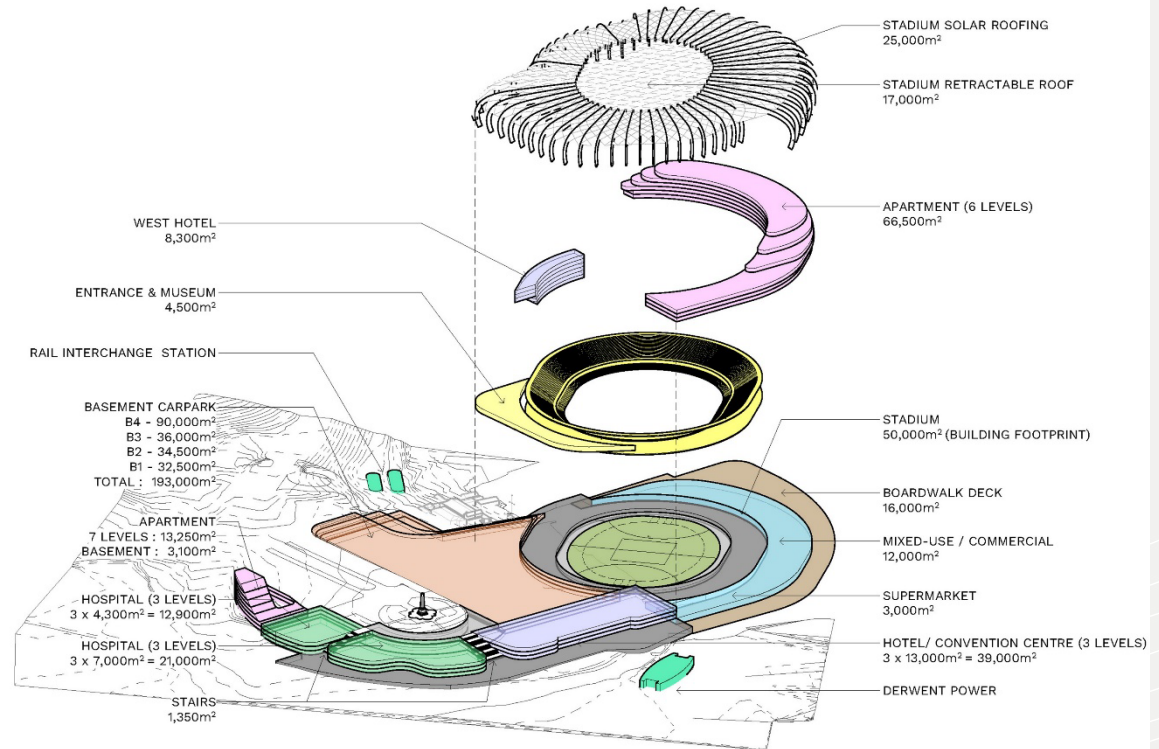
TASMANIAN COMMUNITY PRECINCT APPROACH

CONCEPT BUILDING AREA

Vision is Required

- The sale of land to the various entities will generate income to the Tasmanian Government
- The Stadium MUST be considered as a multipurpose venue and be designed accordingly with a retractable clear roof to allow a profitable income from AFL, Tasmanian Football, Cricket, NRL, NSL, ARU etc. from a sporting perspective and then entertainment such as concerts, UFC, Basketball etc. as Marvel Stadium, and other Stadiums around the World have shown.
- Allows Macquarie Point to be developed in conjunction with the Tasmanian Public.

IT FIXES THE PROBLEMS FOR ALL TASMANIANS AND GIVES THEM AN ASSET THAT THEY COULD ULTIMATELY OWN!



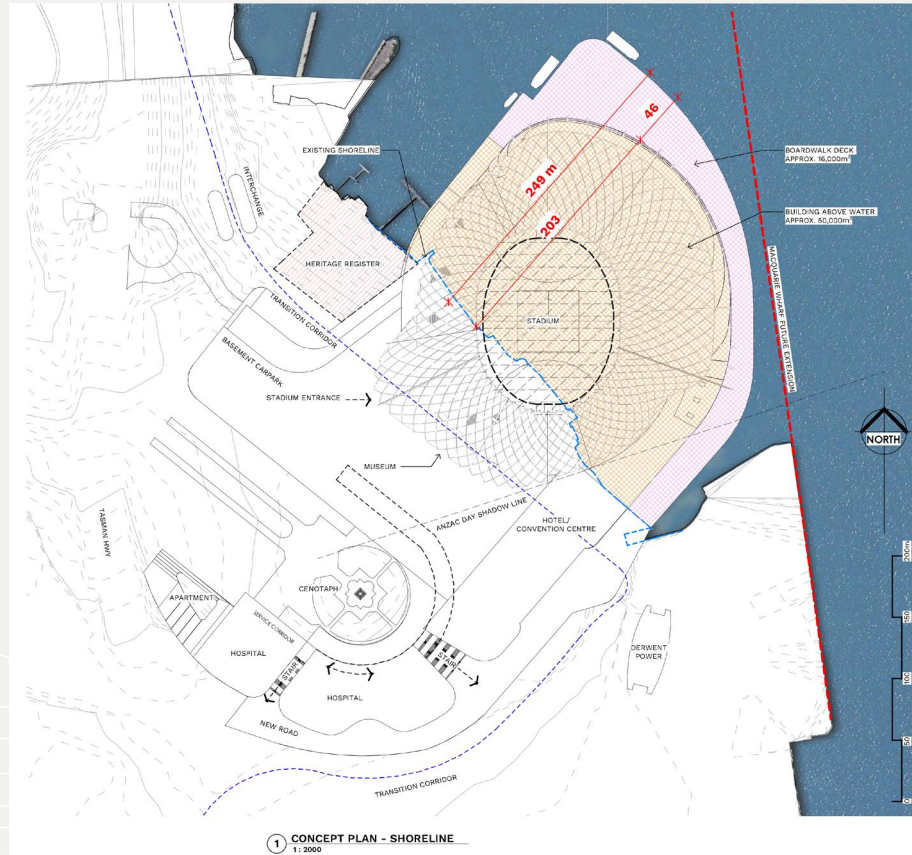
1 CONCEPT ISO VIEW

HOBART STADIUM CONCEPT

EXISTING SHORELINE AND AREA ABOVE WATER

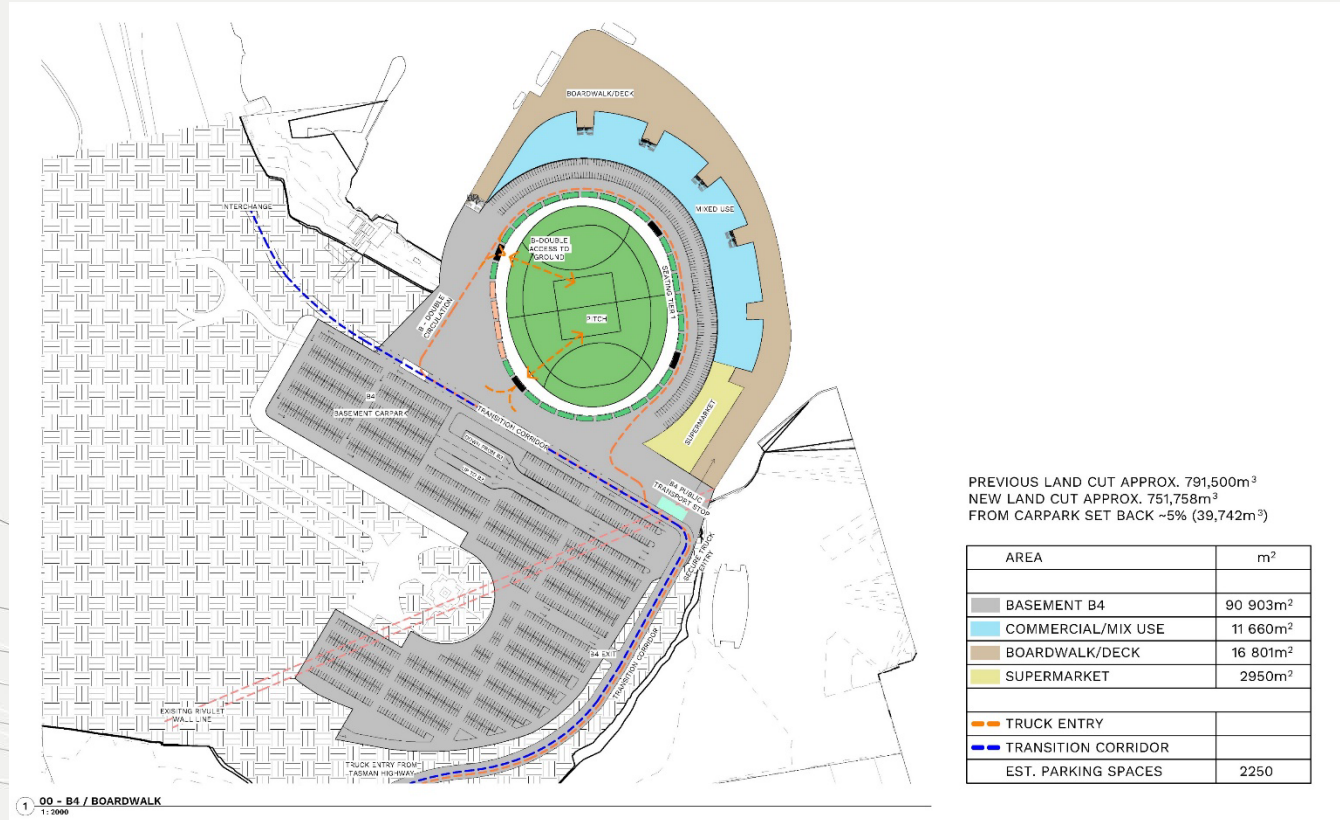
Discussion Points

- TasPorts to be activated via existing relationship through design partner COVA Engineering.
- Environmental review to be updated from the previous CenoTas Consortia Bid – In current discussion.
- Fill works to be carried out by Consortia Partner – Hazell Brothers.

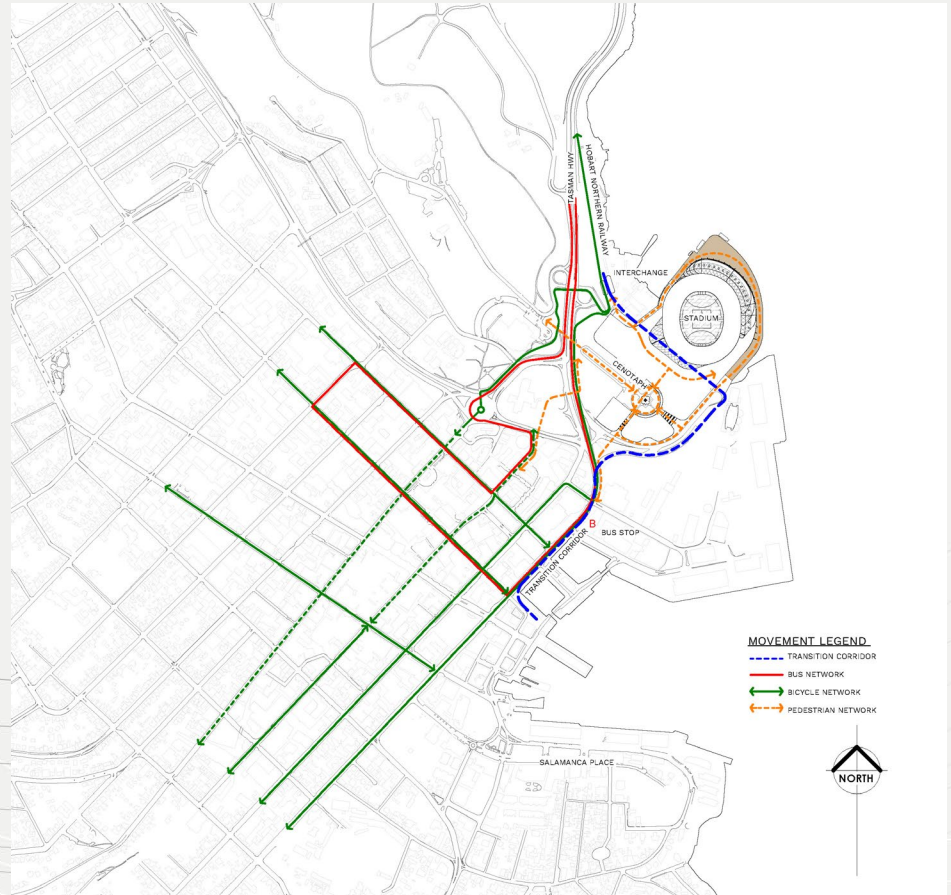


LINKAGE TO THE CBD

BASEMENT B4



LINKAGE TO THE CBD



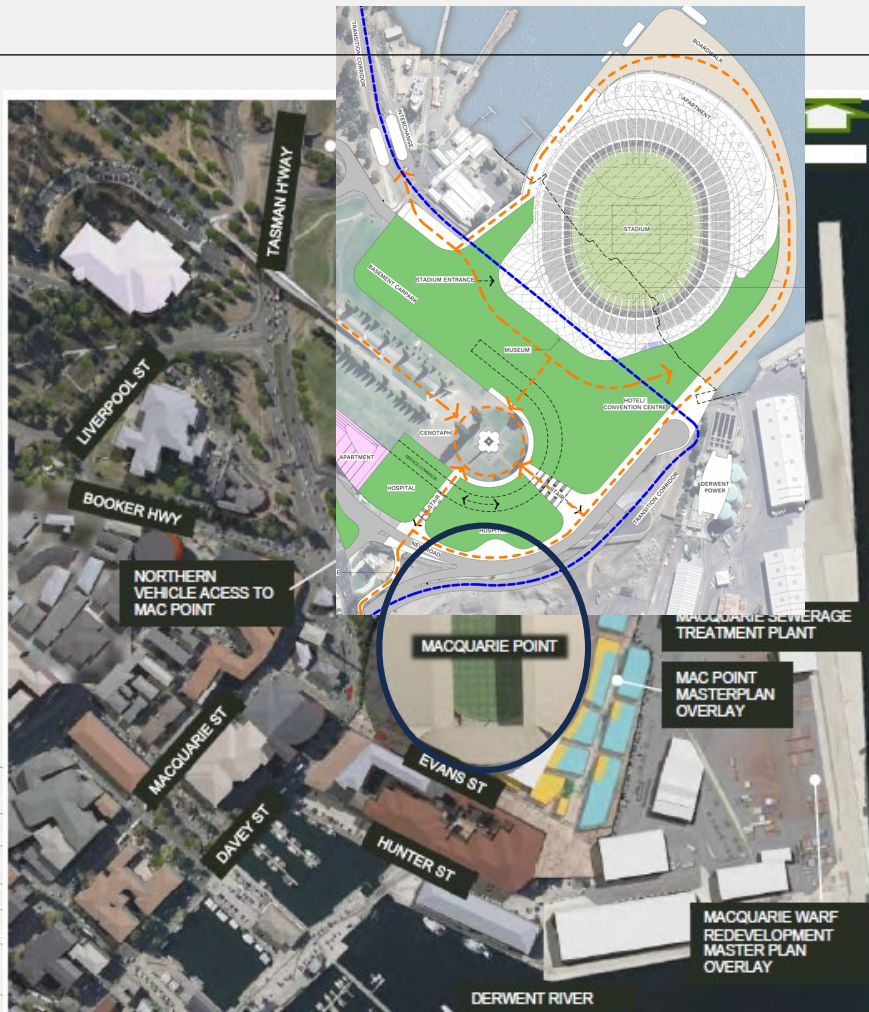
TASMANIAN COMMUNITY PRECINCT APPROACH

DERWENT RIVER VESSEL ACTIVITY

Discussion Points:

- Design on the waterfront area is still the subject of the Consultant team review
- Review to include vessel activity on the Derwent River.
- Retains Macquarie Point as a working wharf and maritime facility.
- Accommodates the proposed Antarctic Headquarters moving forward.
- Removes the requirement for additional roadworks proposed by the Government through the Regatta Grounds.





Size of Ground
with development
assets

Size of Ground
with seating and
roof only

TASMANIAN COMMUNITY PRECINCT APPROACH

CONCEPT WAR MUSEUM

RSL/LEGACY FOCUS

- "Waterfall of the Fallen"
- "Lest We Forget Museum"
- State Headquarters



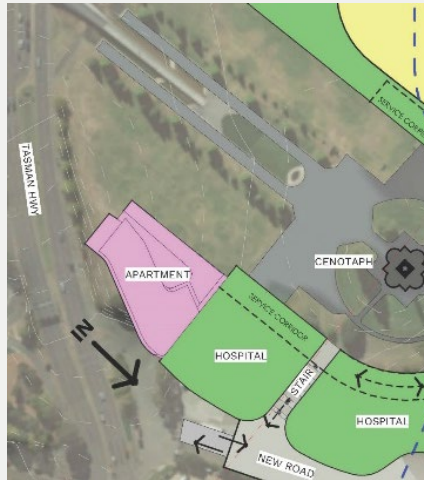
TASMANIAN COMMUNITY PRECINCT APPROACH

CONCEPT APPROACH FROM TASMAN HWY

Welcome to Hobart

New Interactive Gateway to Hobart.

Digital Stadia will activate the wall of this development to highlight upcoming visits, major events, etc. in a manner that will be clearly seen by all Tasmanian and Interstate and Overseas Visitors as they enter Hobart.



STADIUM SEATING

INITIAL STADIUM CAPACITY
BASED ON THE PREFERRED AFL
FIELD SIZE OF 165m X 135m
(MCG)

INITIAL OPENING CAPACITY – 23,900 Seats

Tier 1 – 4700 Seats

Seating is set at the optimum width of 500mm

Seating is set at the optimum width of 800mm

Seating viewing angle is a C – Value of 136

Tier 2 – 14700 Seats

Seating is set at the optimum width of 500mm

Seating is set at the optimum width of 800mm

Seating viewing angle is a C – Value of 120

Tier 3 – 4500 Seats

Seating is set at the optimum width of 500mm

Seating is set to a depth of 750mm

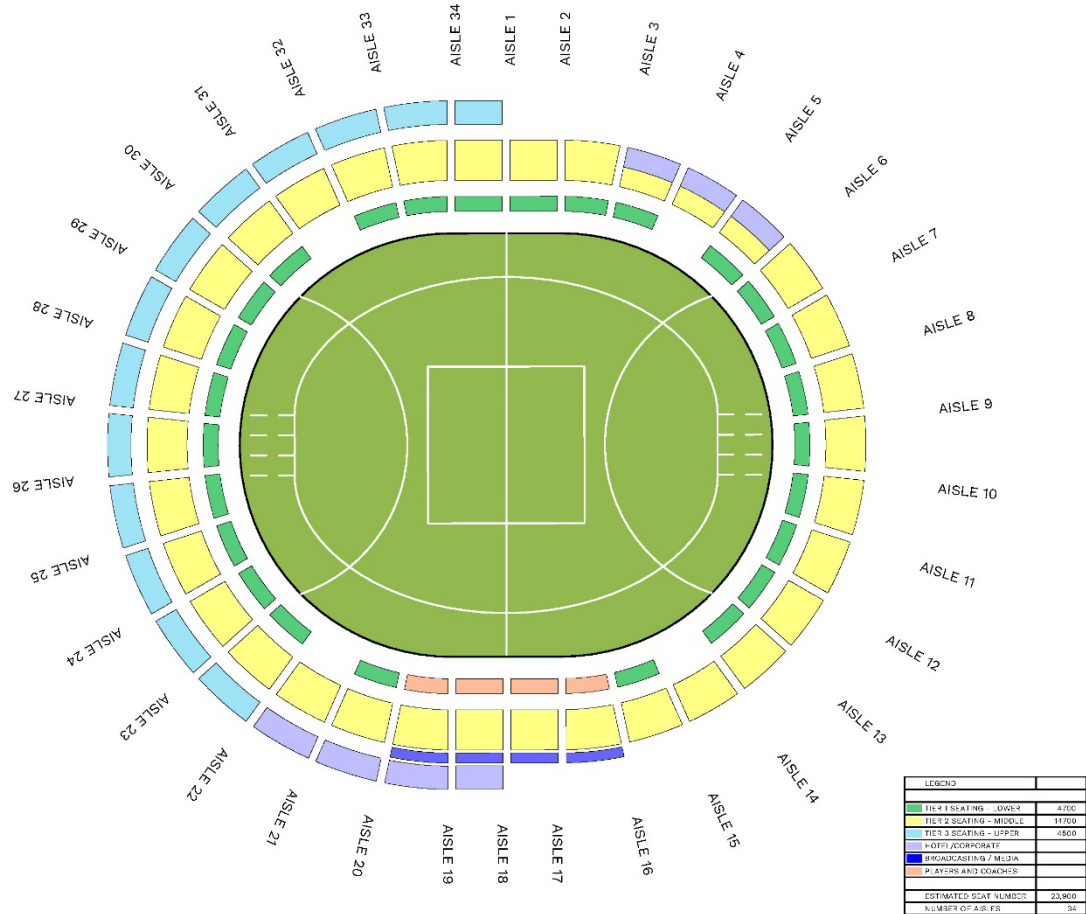
Seating viewing angle is a C – Value of 108

C- value

150mm = Person in front wearing a hat (BEST)

120mm = Good (VERY GOOD)

90mm = Head tilted back (NOT IDEAL)



STADIUM SEATING

NON - STRUCTURAL CAPACITY INCREASE

FUTURE CAPACITY – 27,800 Seats

Tier 1 – 4700 Seats

Seating is set at the optimum width of 500mm
 Seating is set at the optimum width of 800mm
 Seating viewing angle is a C –Value of 136

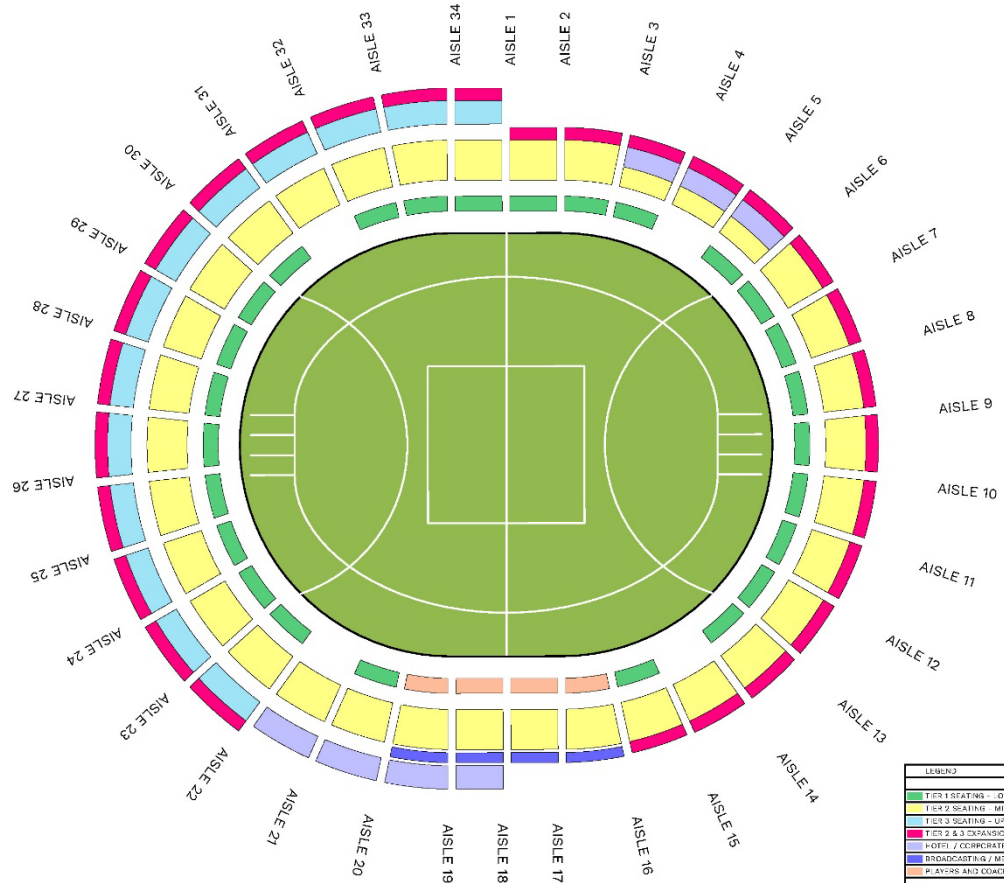
Tier 2 – 16900 Seats

Seating is set at the optimum width of 500mm
 Seating is set at the optimum width of 800mm
 Seating viewing angle is a C –Value of 120

Tier 3 – 6200 Seats

Seating is set at the optimum width of 500mm
 Seating is set to a depth of 750mm
 Seating viewing angle is a C –Value of 108

(By installing additional bolt down seating to the existing structure, the capacity can increase an additional 3900 seats)

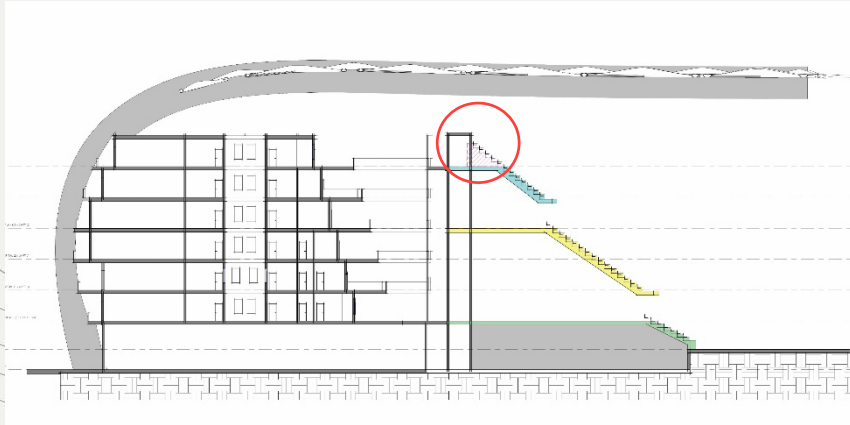


LEGEND	
TIER 1 SEATING - LOWER	4700
TIER 2 SEATING - MIDDLE	16,700
TIER 3 SEATING - UPPER	4800
TIER 2 & 3 CHAIRMAN	3900
HOTEL / CORPORATE	
BROADCASTING / MEDIA	
PLAYERS AND COACHES	
ESTIMATED SEAT NUMBER	27,800
NUMBER OF AISLES	34

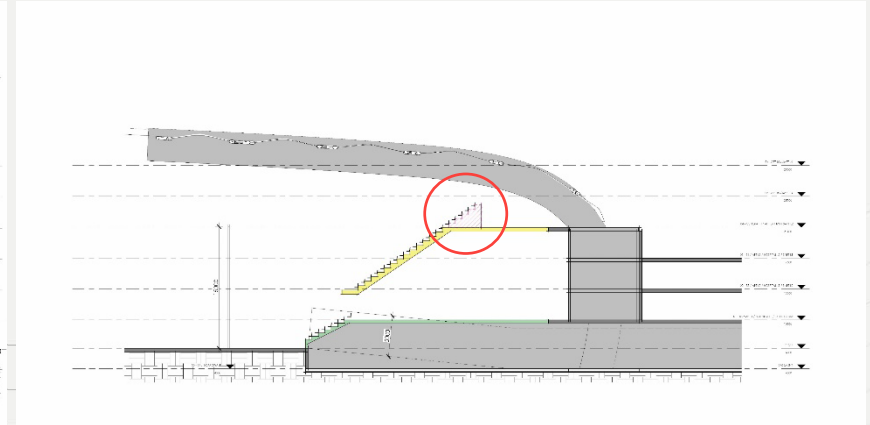
STADIUM SEATING CONCEPT SECTIONS

Focusing on Stadium to Residential/Hotel connection

Expansion=



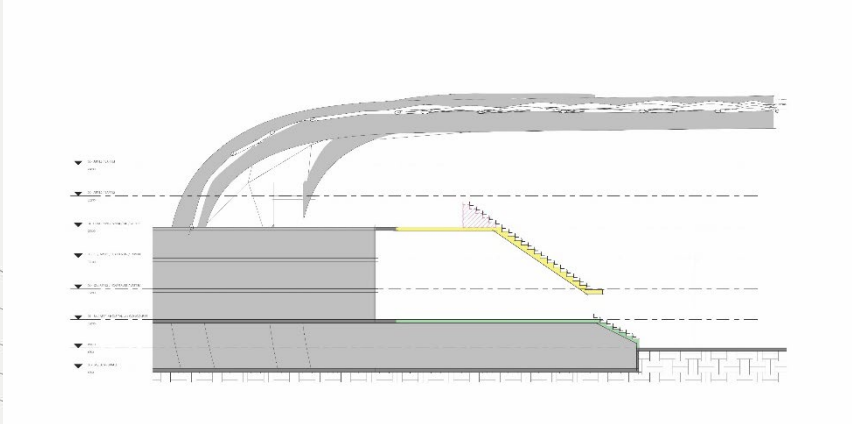
CONCEPT SECTION - NORTH



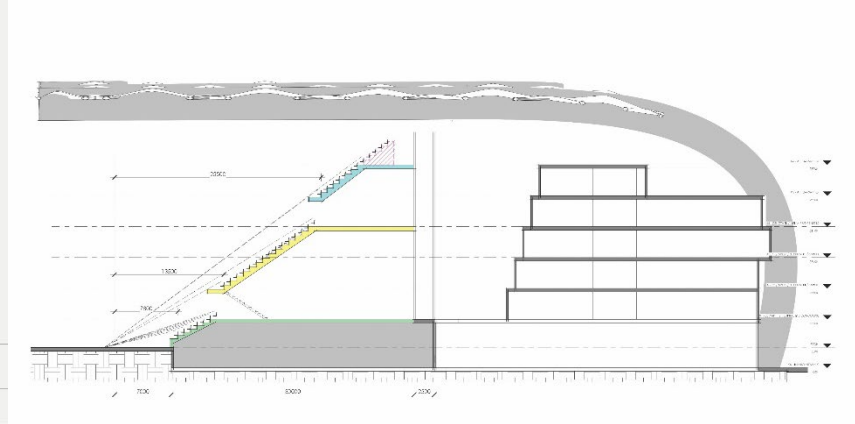
CONCEPT SECTION - SOUTH

STADIUM SEATING CONCEPT SECTIONS

Focusing on Stadium to Residential/hotel connection

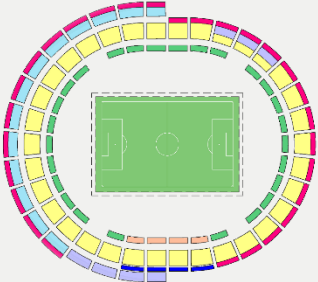


CONCEPT SECTION - WEST

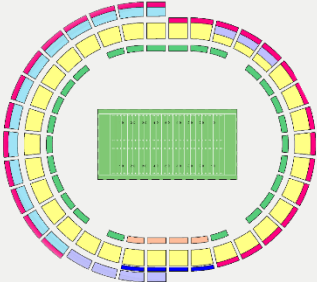


CONCEPT SECTION - EAST

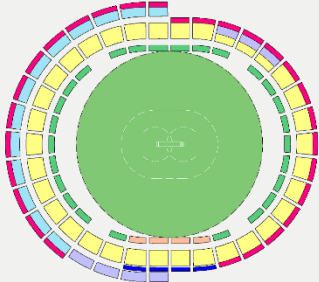
STADIUM USES



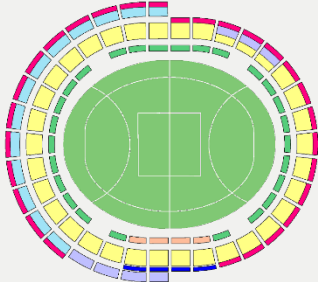
FOOTBALL



NFL



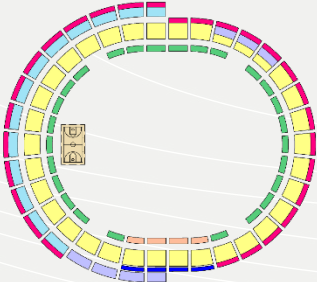
CRICKET



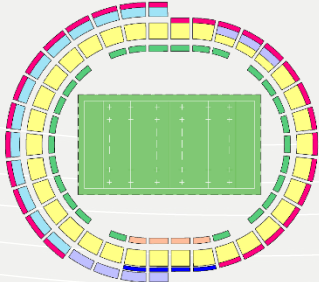
AFL



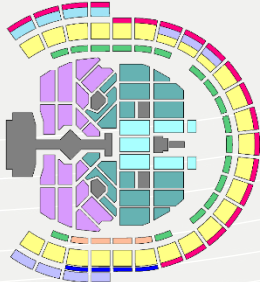
ATHLETICS



BASKETBALL



RUGBY

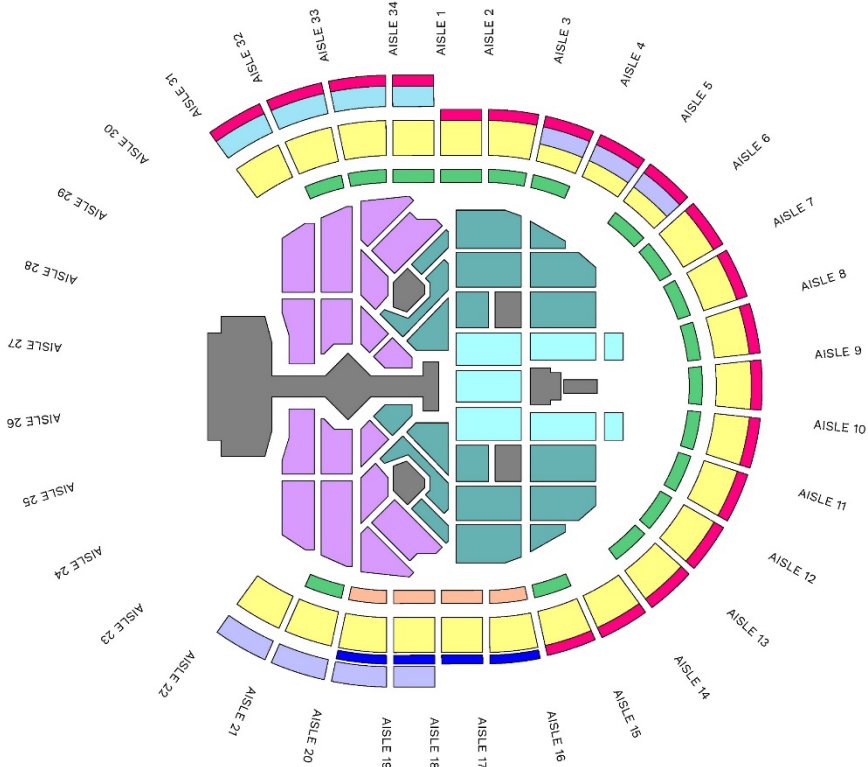


CONCERTS

STADIUM LAYOUT

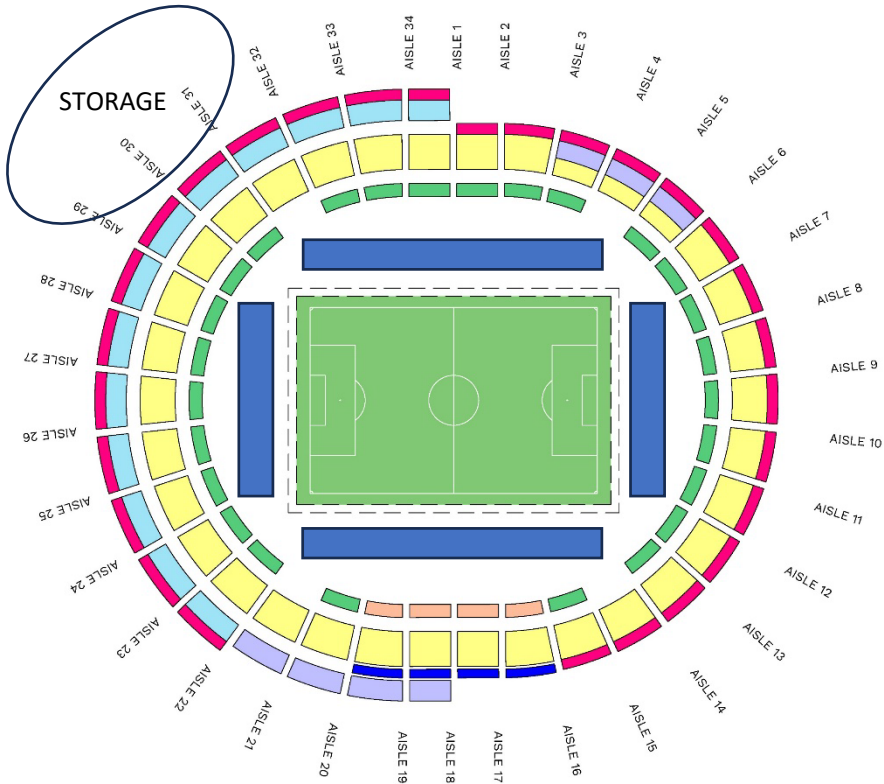
POTENTIAL EVENT

- CONCERTS



STADIUM LAYOUT

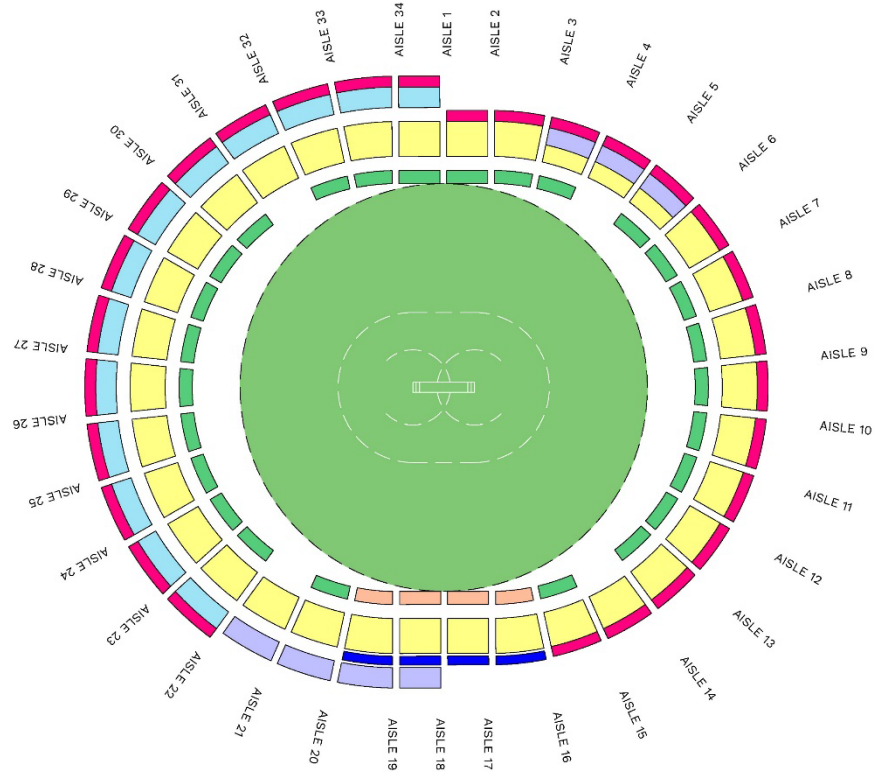
POTENTIAL EVENT — FOOTBALL



STADIUM LAYOUT

POTENTIAL EVENT

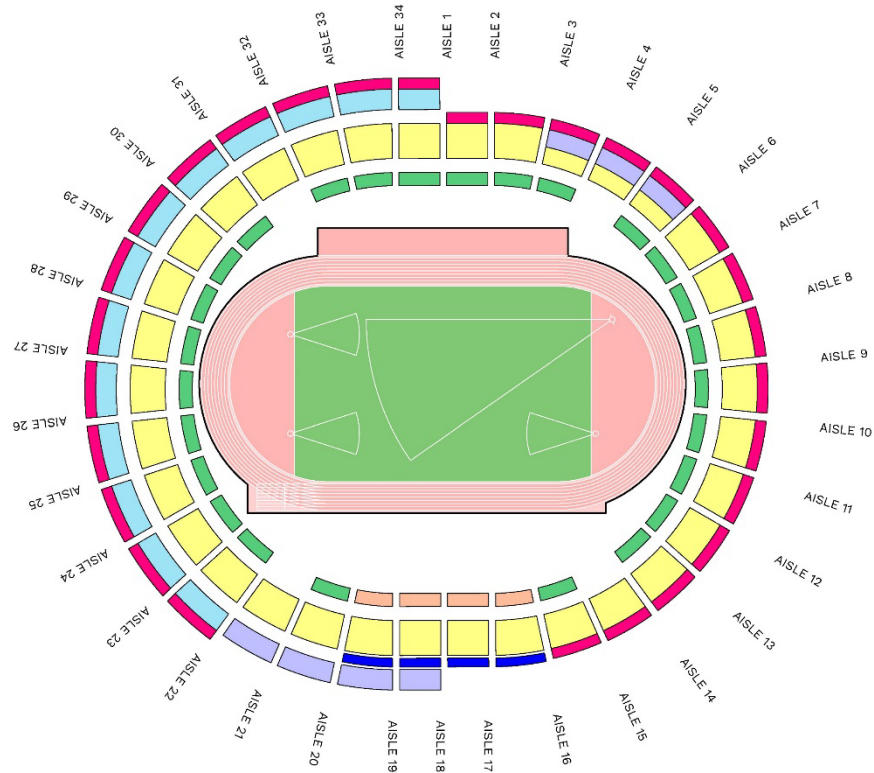
— CRICKET



STADIUM LAYOUT

POTENTIAL EVENT

— ATHLETICS



TASMANIAN COMMUNITY PRECINCT APPROACH

CONCEPT APPROACH FROM BRIDGE OF REMEMBRANCE



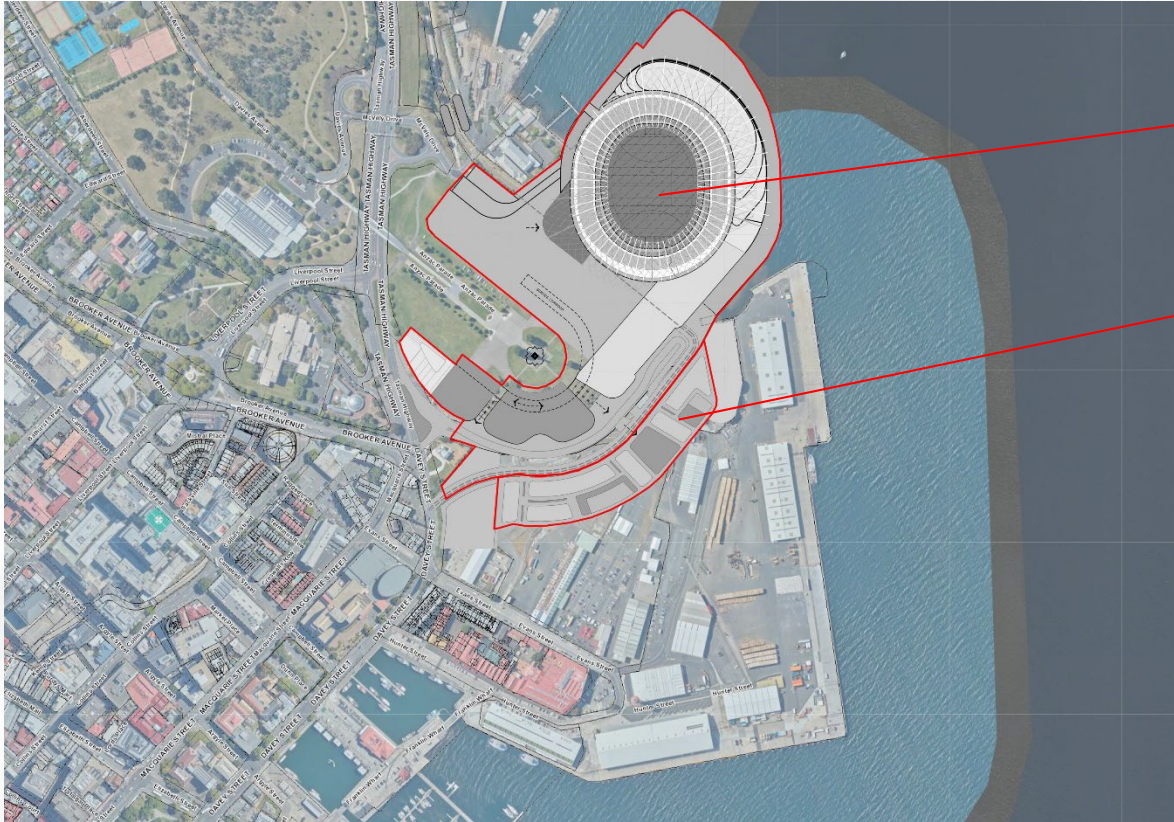
Stadia

Precinct

Site



Stadia Precinct Site



Stadia Precinct Site
Approx. 162,200m²

Social Housing Site
Approx. 22,300m²

Stadia Precinct Site



Stadia Precinct Site
Approx. 162,200m²

Social Housing Site
Approx. 22,300m²