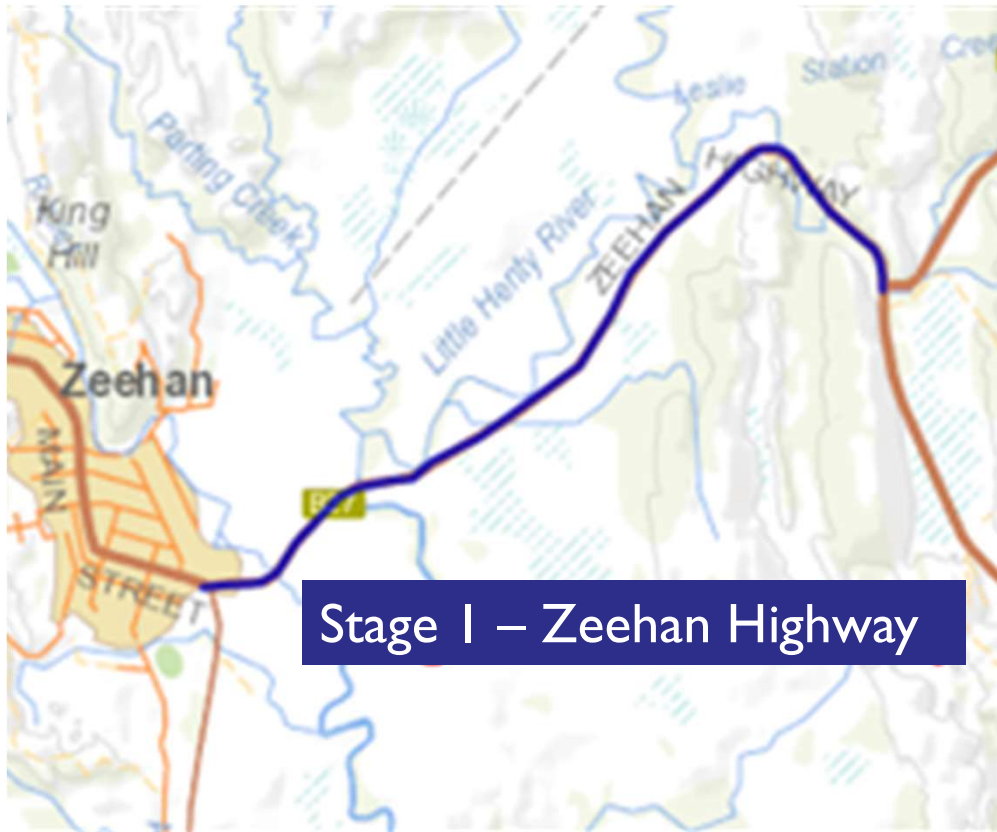


Overview of Stage I – Zeehan Highway Design

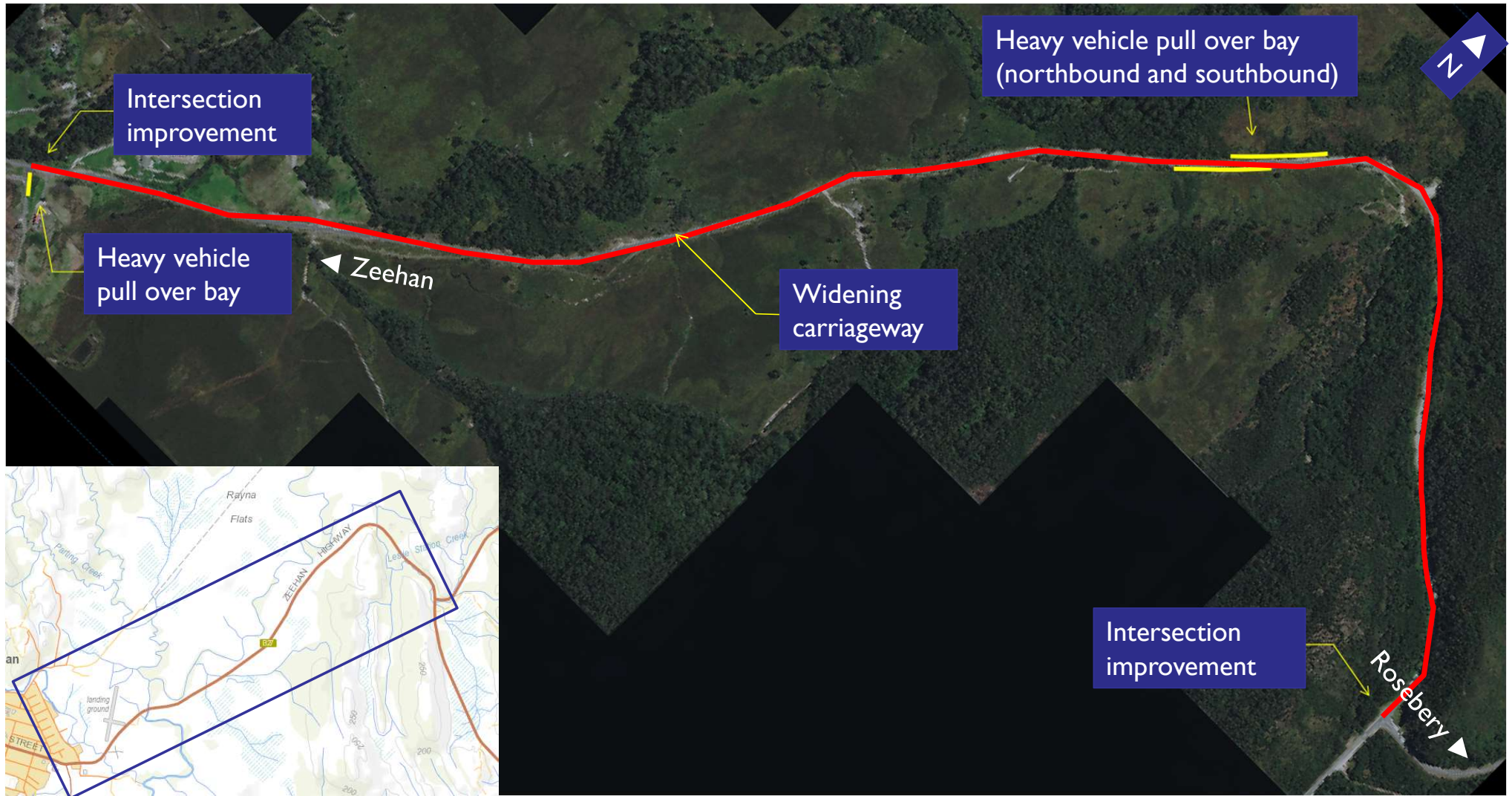


The Zeehan Highway package (Stage I) begins near the Murchison Highway turnoff towards Henty Road, covering approximately 4.7 km.

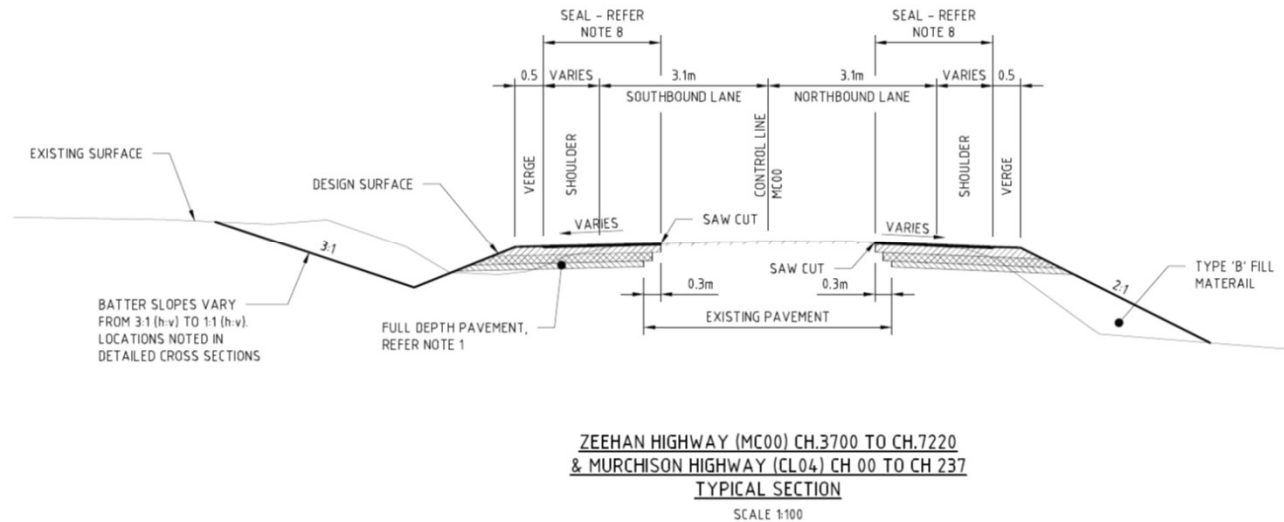
The scope for the Zeehan Highway package includes:

- Road widening
- Three new heavy vehicle pull over bays
- Intersection improvements (Zeehan Highway / Henty Road and Zeehan Highway / Murchison Highway).

Overview of Stage I – Zeehan Highway Design



Widening – Stage I Zeehan Highway

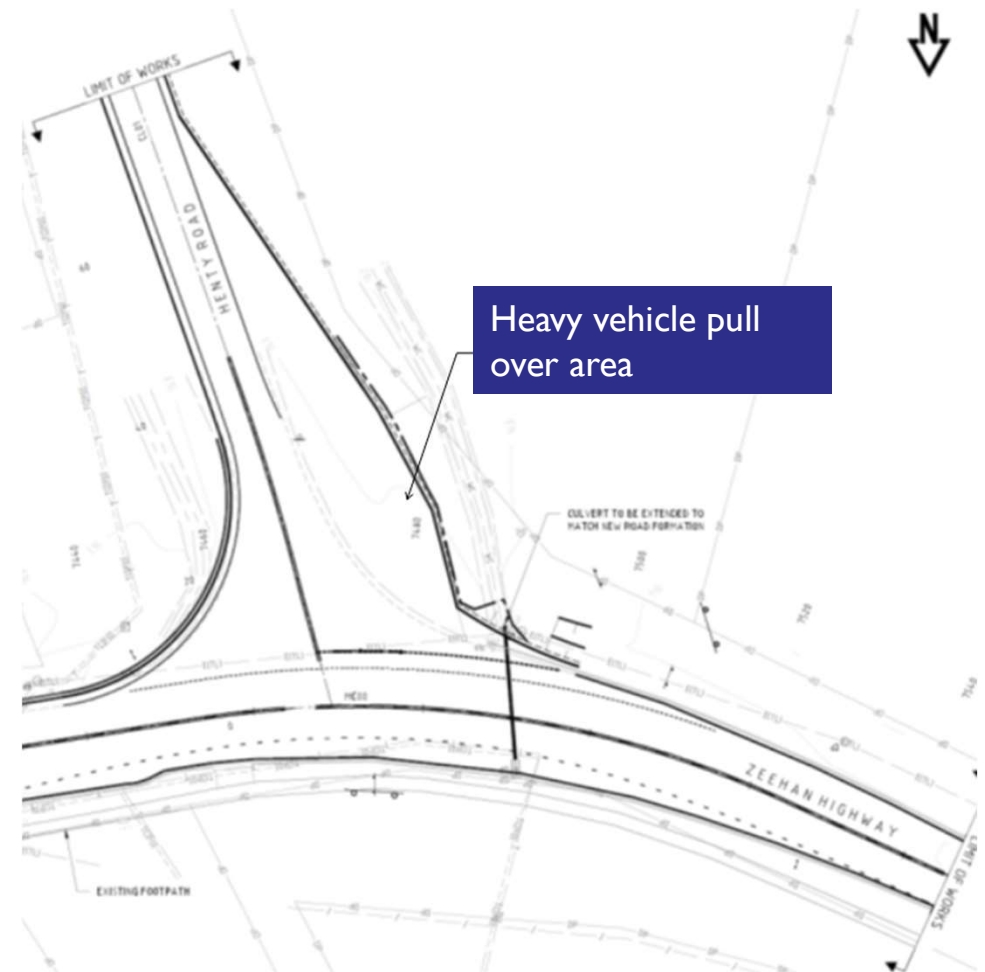


Widening the existing carriageway to include:

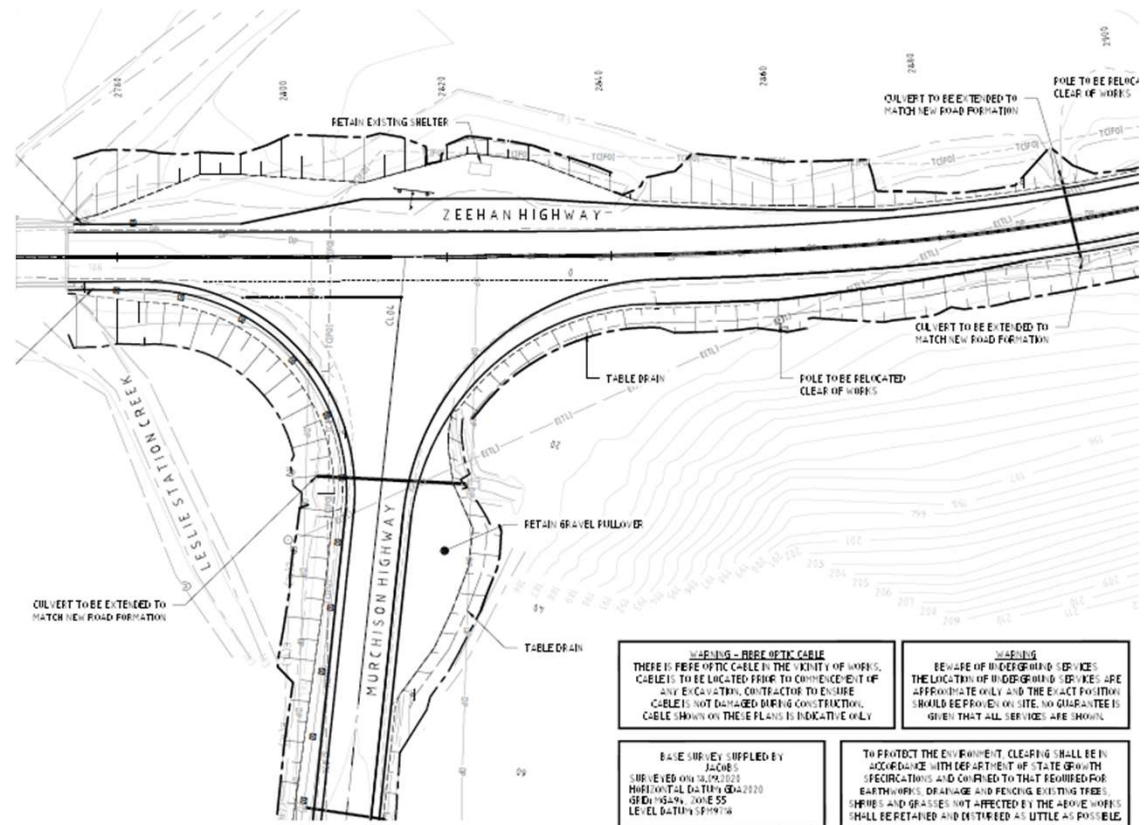
- 3.1 m wide sealed traffic lanes
- 0.9 m wide sealed shoulders
- 0.5 m wide unsealed verge plus localised widening to accommodate safety barrier where required.

The overall sealed width will be increased from 6.0 m to 8.0 m (nominally).

Intersection upgrade (Zeehan Highway / Henty Road) and new heavy vehicle pull over area

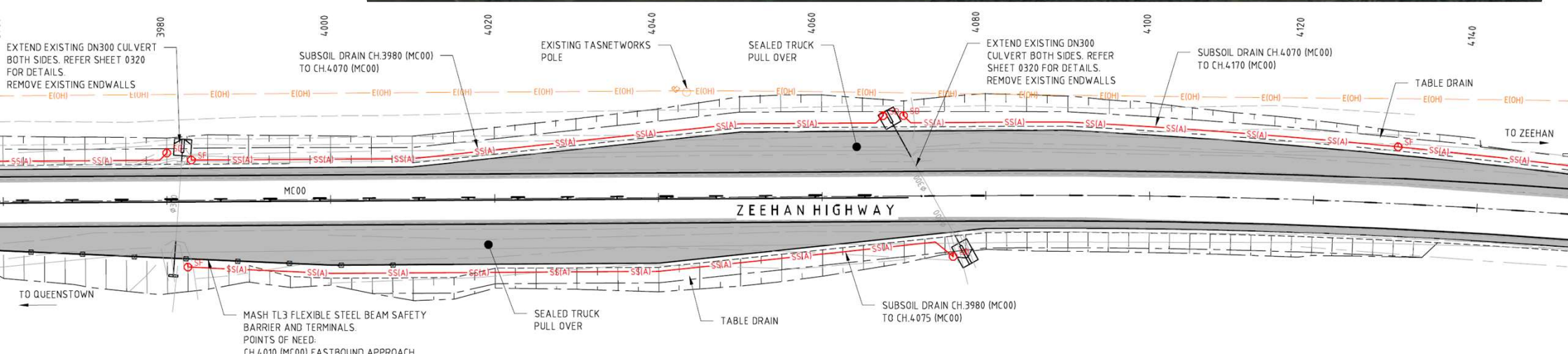
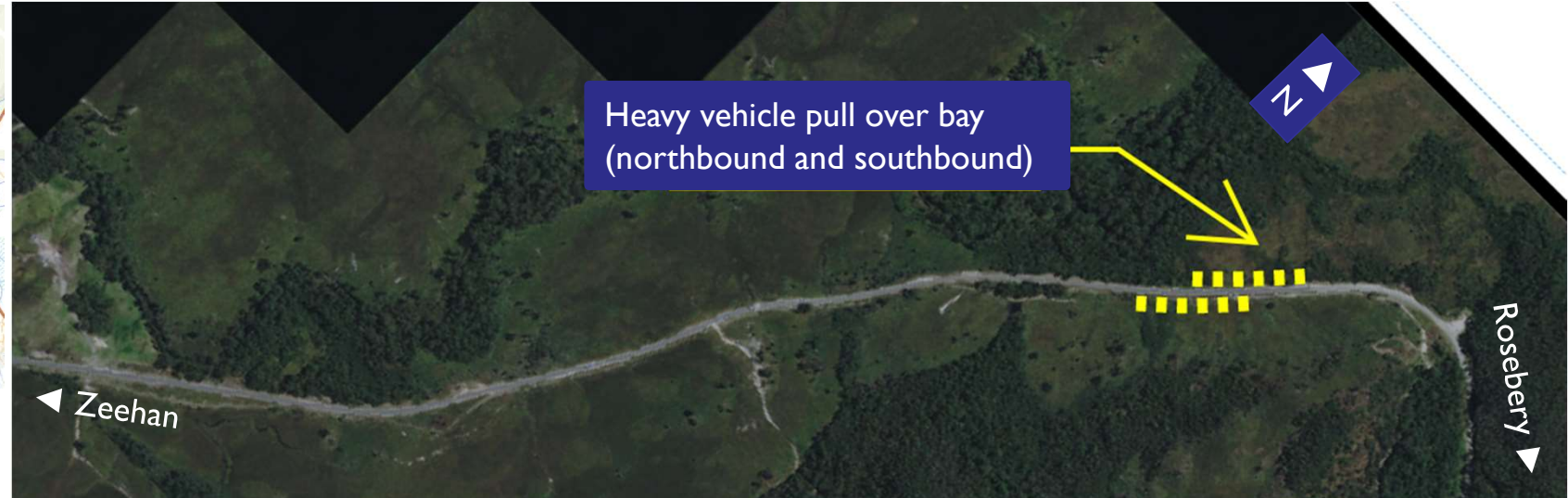


Intersection upgrade (Zeehan Highway / Murchison Highway)



Heavy vehicle pull over bay – Northbound and southbound

General arrangement



CH 4040

CH 4040

Overview of Stage 2 – Murchison Highway Design

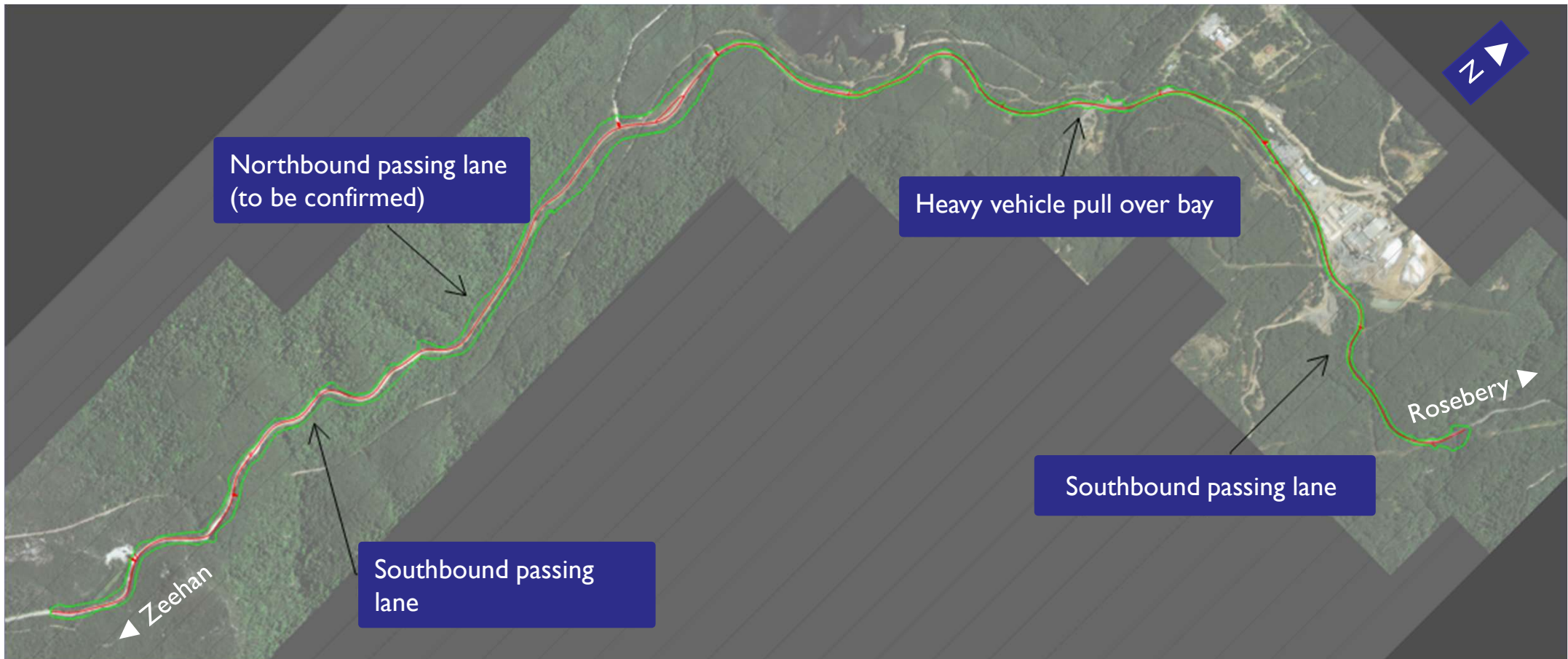


The Murchison Highway package begins approximately 5.8km from Zeehan Highway Intersection for 7.1km towards Stitt River Bridge (Rosebery).

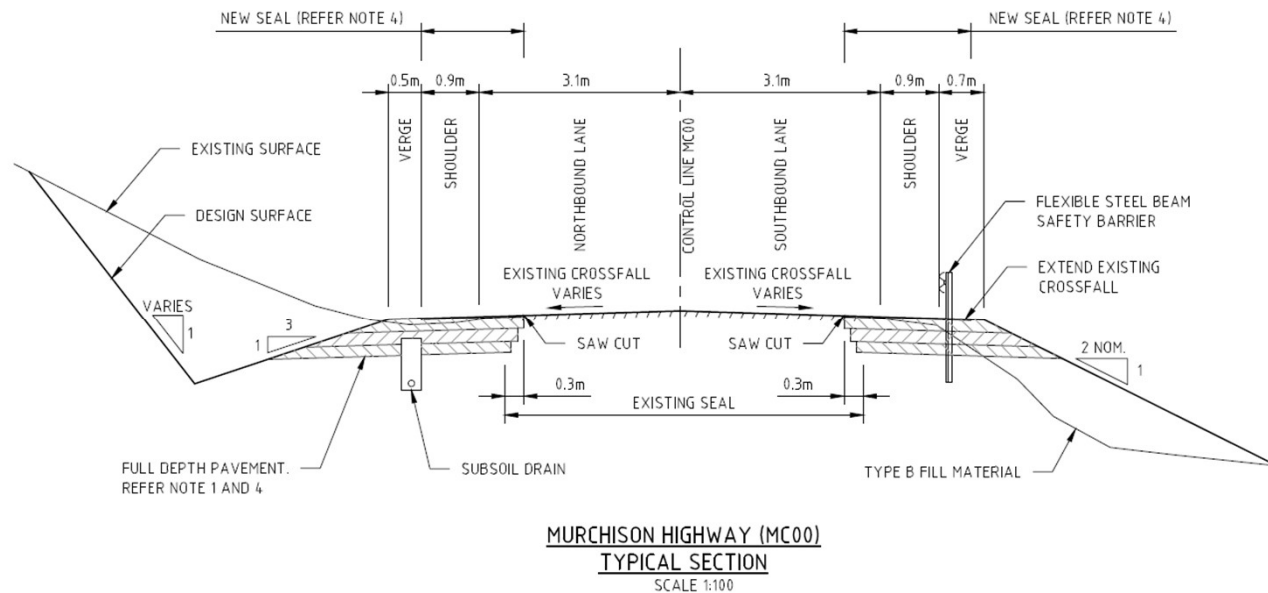
The scope for the Murchison Highway package includes:

- One new northbound overtaking opportunity
- Two new southbound overtaking opportunities
- One new heavy vehicle pull over bay.

Overview of Stage 2 – Murchison Highway Design



Widening – Stage 2 Murchison Highway

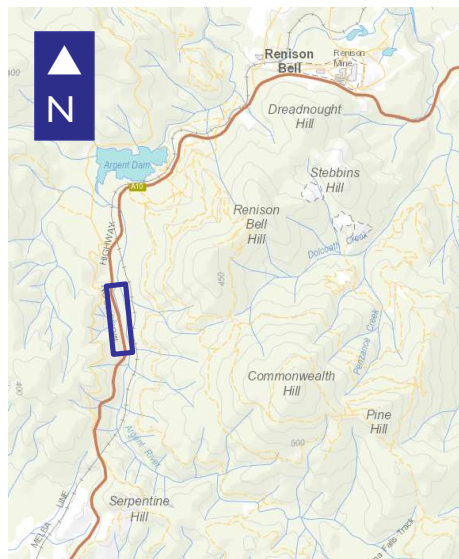


Widening the existing carriageway to include:

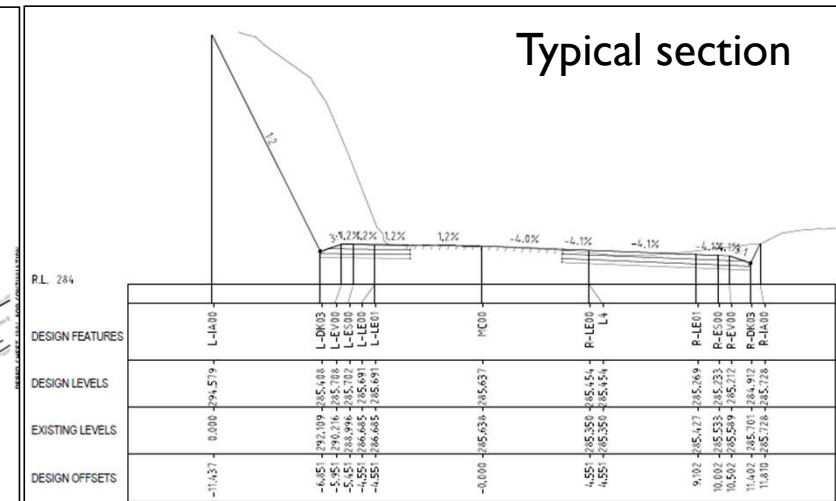
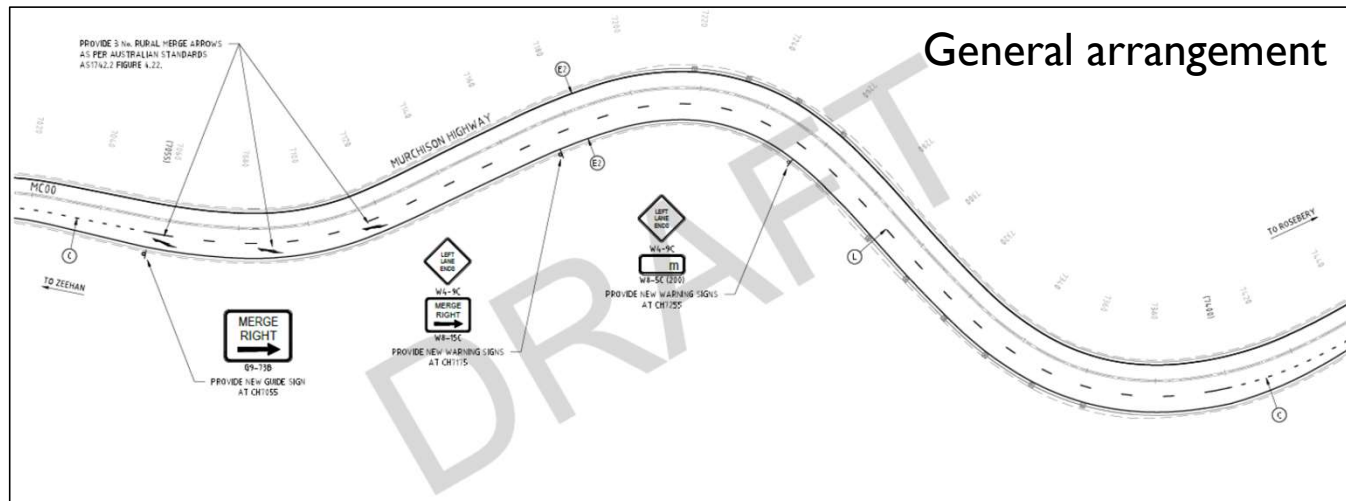
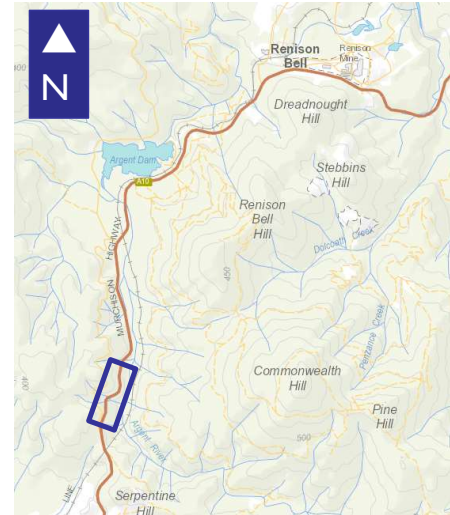
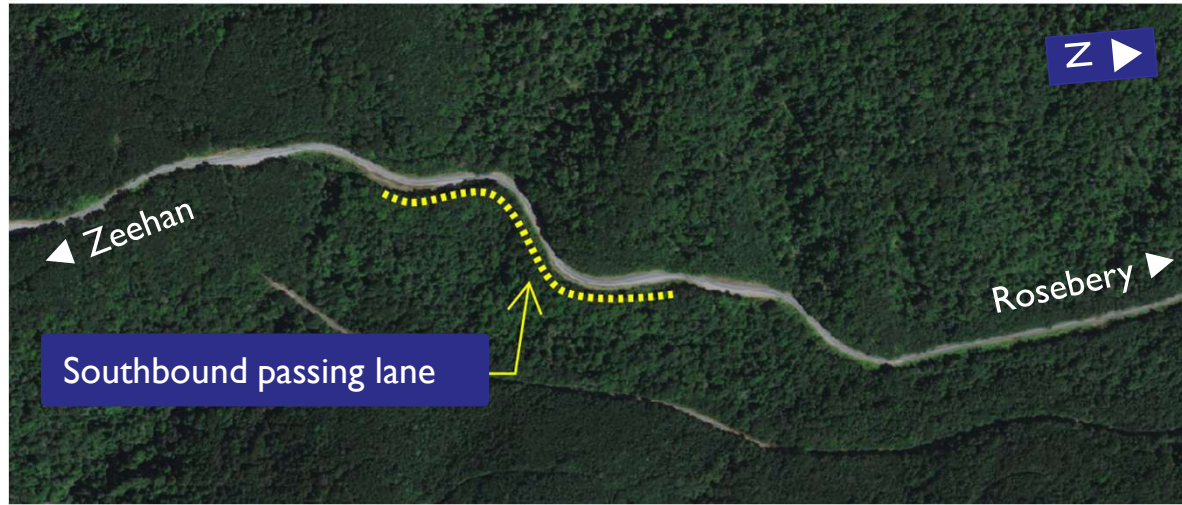
- 3.1 m wide sealed traffic lanes
- 0.9 m wide sealed shoulders
- 0.5 m wide unsealed verge plus localised widening to accommodate safety barrier where required

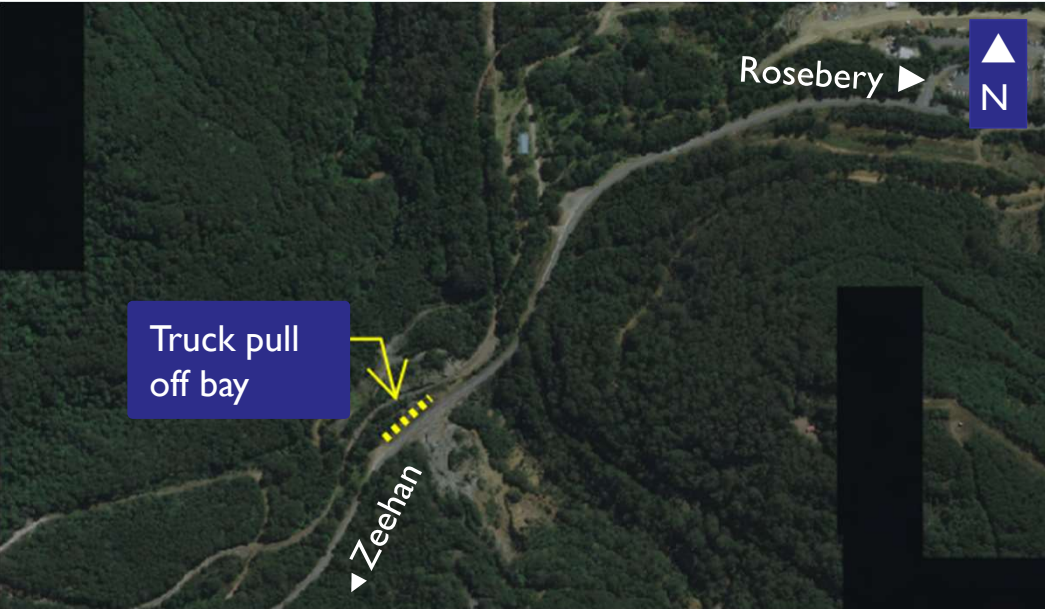
The overall sealed width will be increased from 6.0 m to 8.0 m (nominally).

Northbound passing lane – location to be confirmed

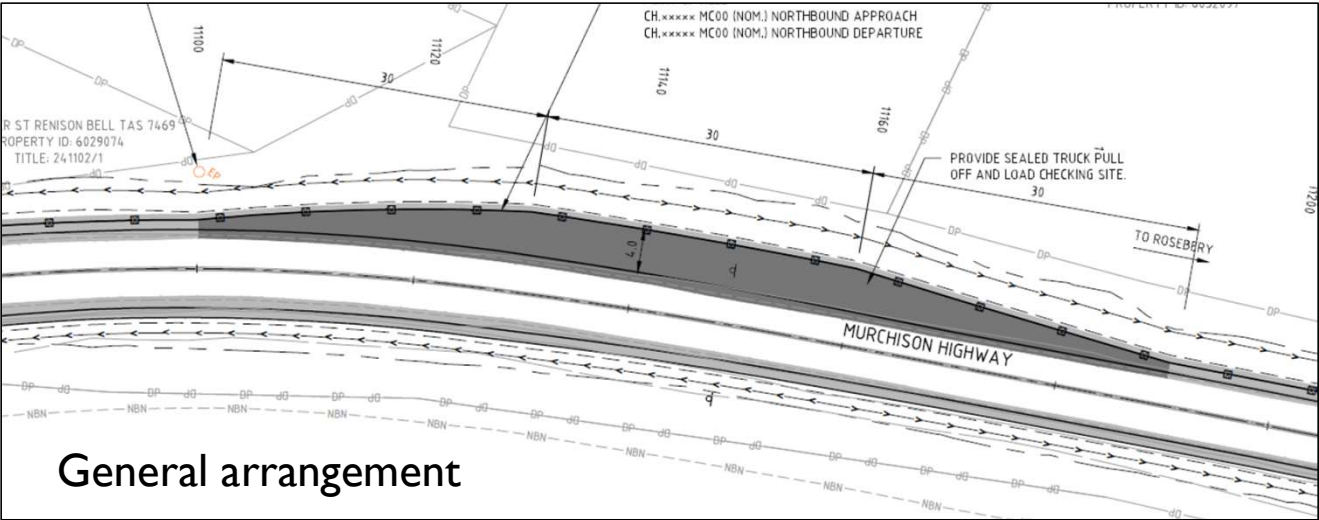
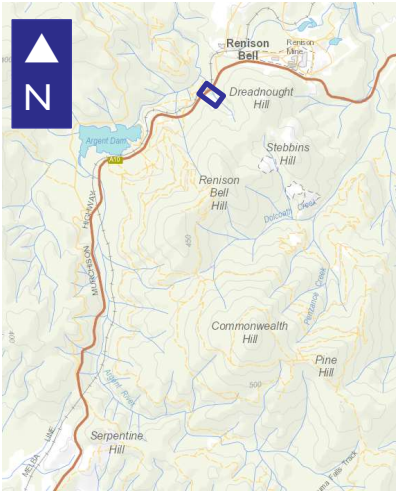


Southbound passing lane





Heavy vehicle pull over bay



General arrangement

Typical section

