

# DESIGN PROPOSAL

## HOBART CITY HIGH SCHOOL

### NEW TOWN CAMPUS





# CONTENTS

# 1.0

## Part 1.0: CONTENTS

1.0 2

## Part 2.0: PROJECT INFO

2.0 Executive Summary 3

## Part 3.0: EXISTING FACILITIES

3.1 Existing Ground Floor 4

3.2 Existing First Floor 5

## Part 4.0: PROPOSED

4.1 Proposed Ground Floor 6

4.2 Proposed First Floor 7

### EXEC. SUMMARY

# 2.0



**AGENCY** – accommodating a learning culture shift in the future with flexible GLAs around a learning commons – all focussed on learning, not a hybrid food/learning commons.



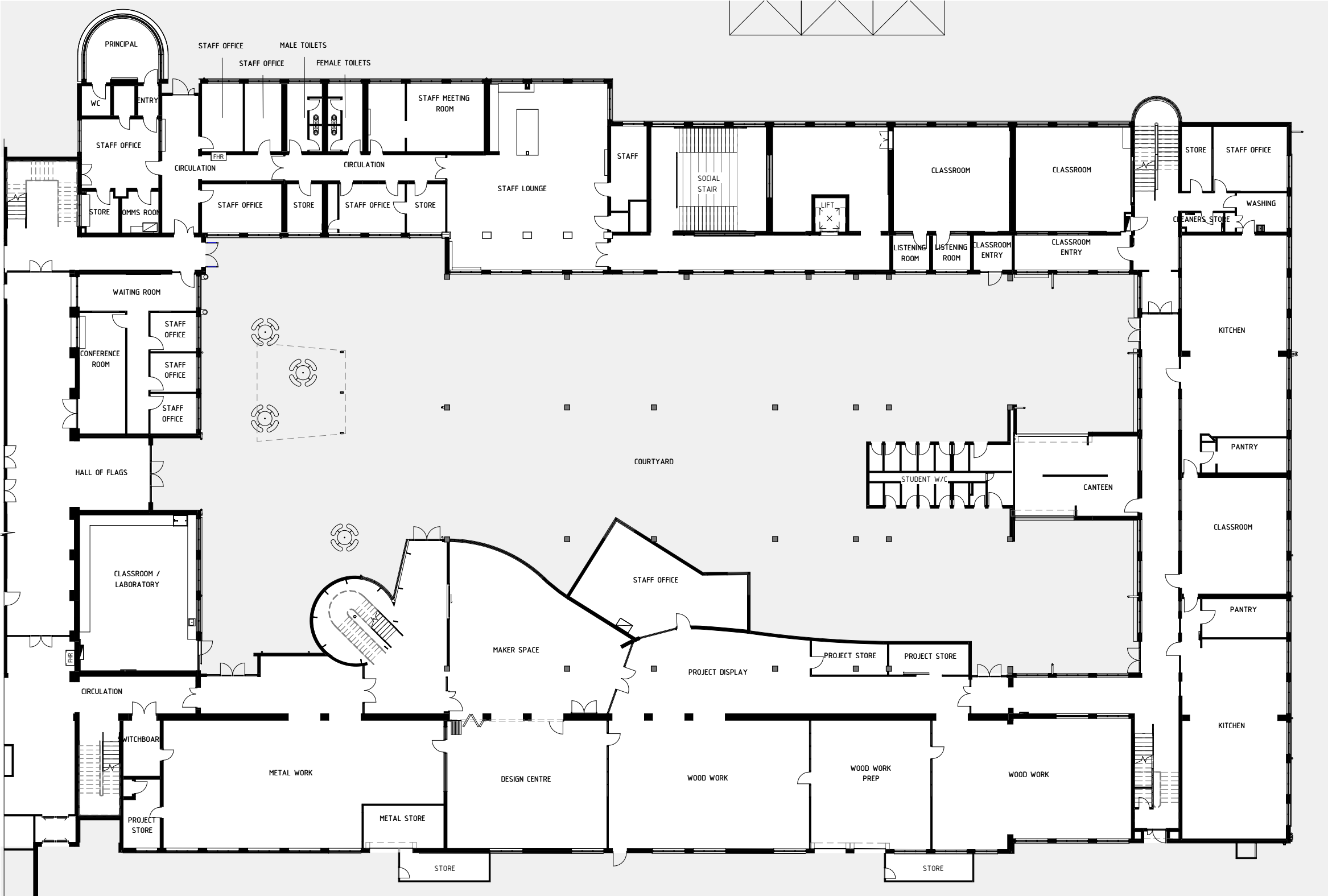
**WELLBEING** – providing for a positive social cultural change for the student cohort around food and positive interactions. This is working well in other redeveloped schools.



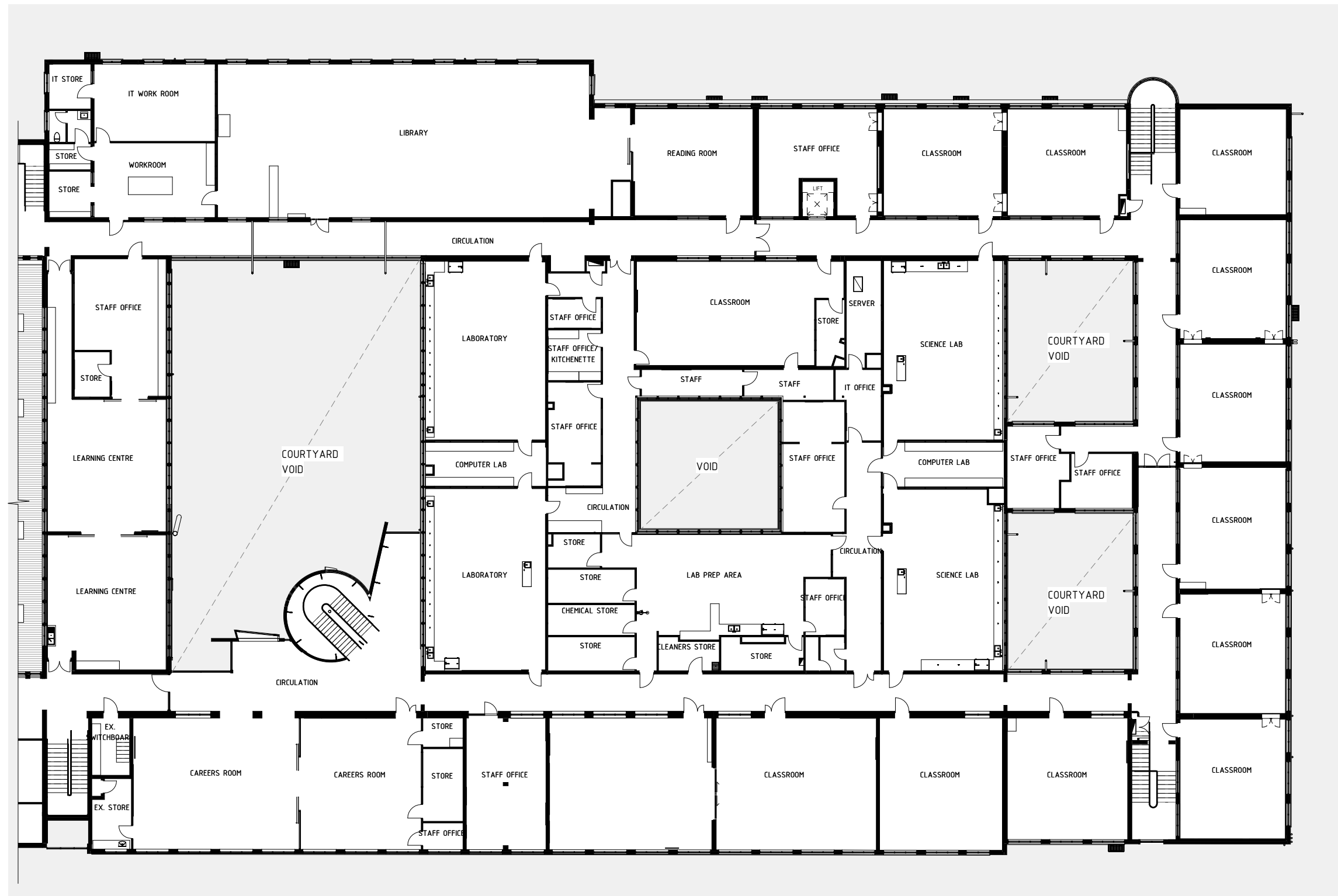
**AGENCY & WELLBEING THROUGH TYPOLOGICAL TRANSFORMATION**  
– Defeating the single loaded corridor typology with central cross and vertical circulation.

# 3.1

## EXISTING FACILITIES - GROUND FLOOR



# FIRST FLOOR - EXISTING FACILITIES

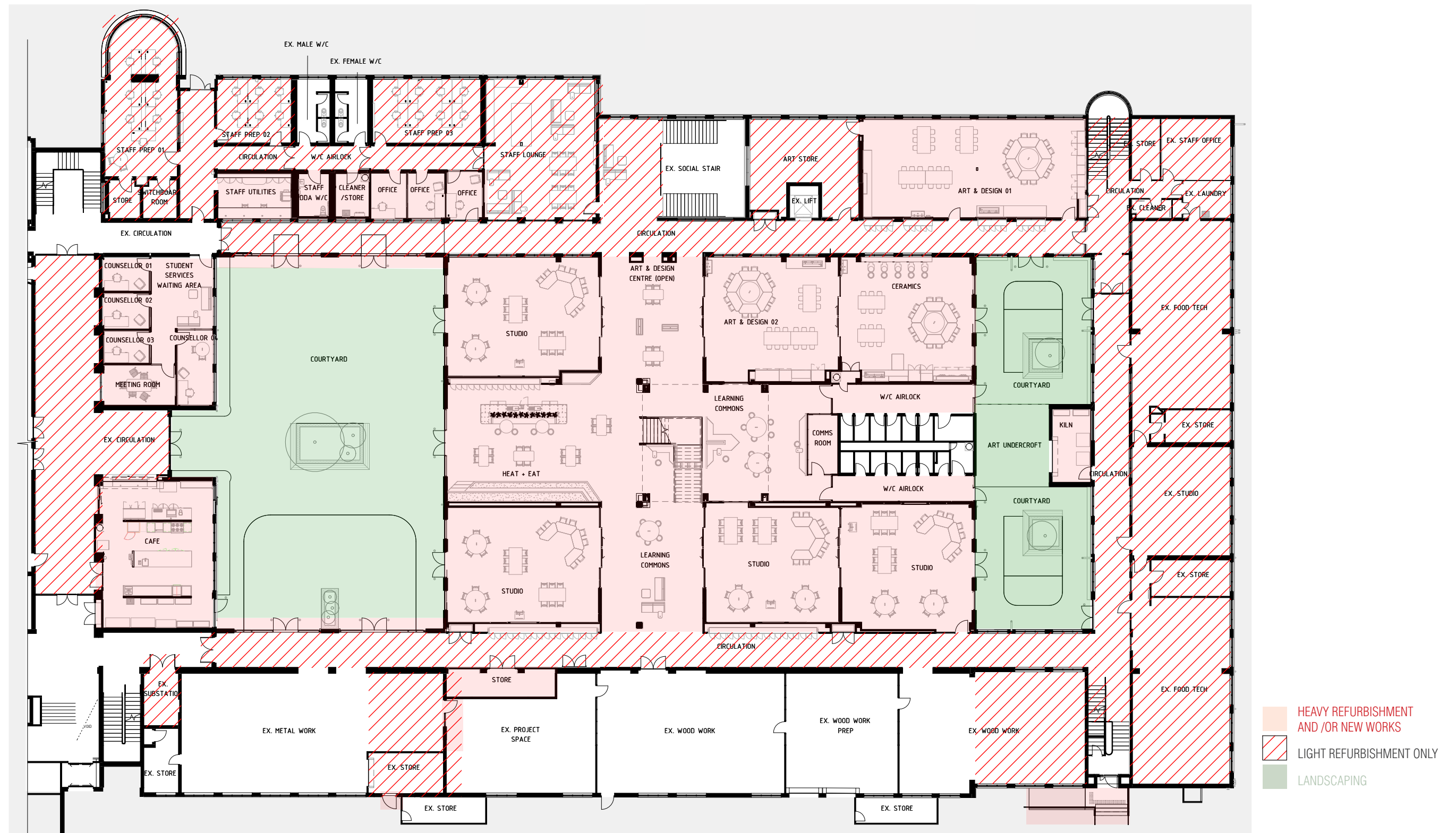




## 4.1

---

### PROPOSED - GROUND FLOOR



NOT TO  
SCALE

HOBART CITY HIGH  
SCHOOL  
ASSET: J757



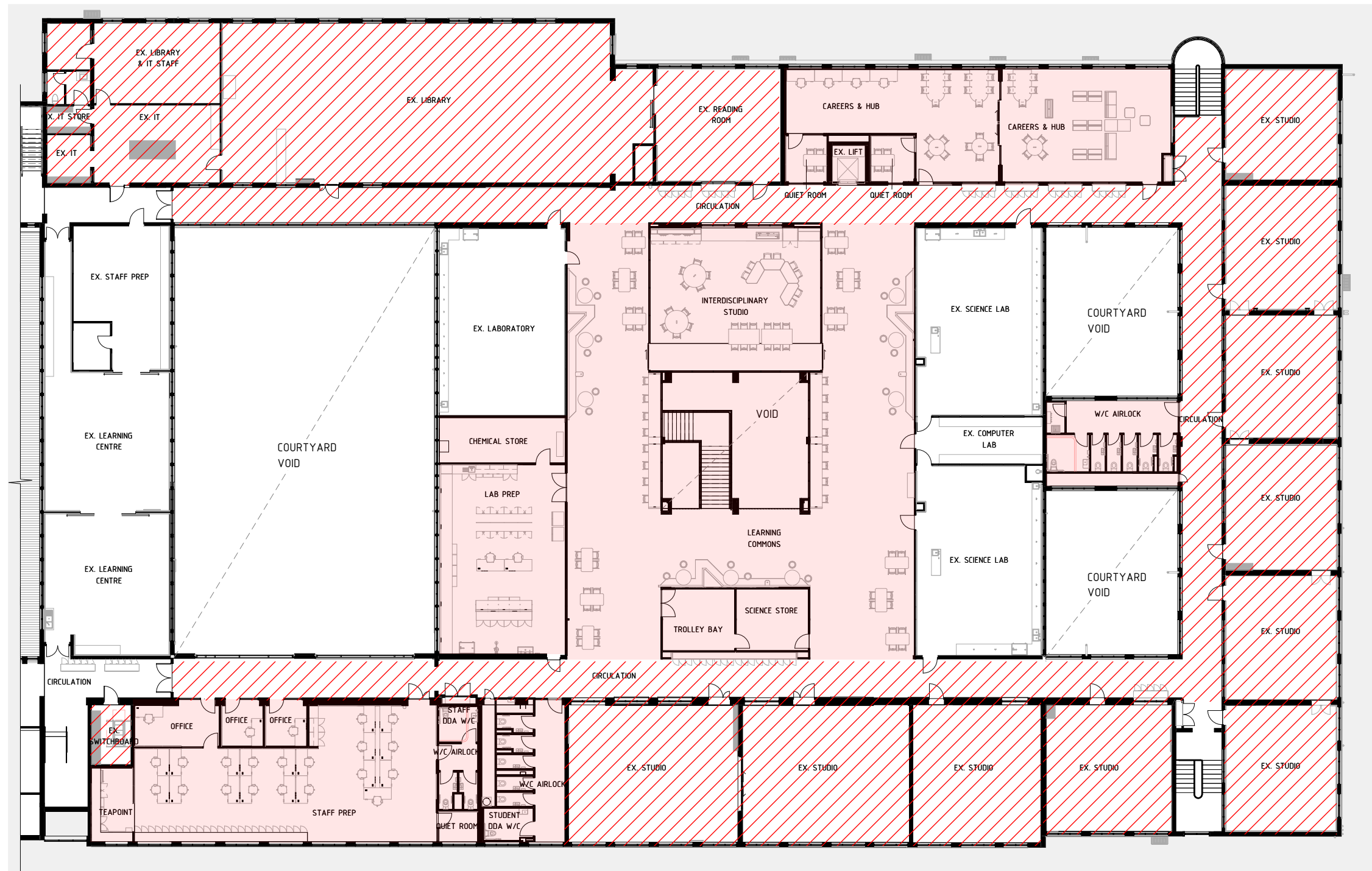
**THOMSON ROSSI**  
ARCHITECTS  
INTERIOR DESIGNERS  
FACILITY PLANNERS

Phone +61 8 7324 9999  
design@thomsonrossi.com.au  
www.thomsonrossi.com.au

© COPYRIGHT

**HOBART CITY HIGH SCHOOL - NEW TOWN CAMPUS** | **6**  
3328-DESIGN PROPOSAL





 HEAVY REFURBISHMENT  
AND /OR NEW WORKS

 LIGHT REFURBISHMENT ONLY

NOT TO SCALE | HOBART CITY HIGH SCHOOL  
ASSET: J757



**THOMSON ROSSI**  
ARCHITECTS  
INTERIOR DESIGNERS  
FACILITY PLANNERS

Phone +61 8 7324 9999  
design@thomsonrossi.com.au  
www.thomsonrossi.com.au

© COPYRIGHT













