

Images from Lot 125 (Polygon 125) High Conservation Value forest proposed to be added to the Tasmanian Wilderness World Heritage Area



Figure 1 Historic timber getting Tram way



Figure 2 Bessel's road, 1960



Figure 3 Smoko Road, 1960s



Figure 4 HU307



Figure 5 Recent Regrowth, looking north to Mother Cummings Peak



Figure 6 Vista from Community look-out on Scott's Road



Figure 7 recently regenerated clear fell coupe

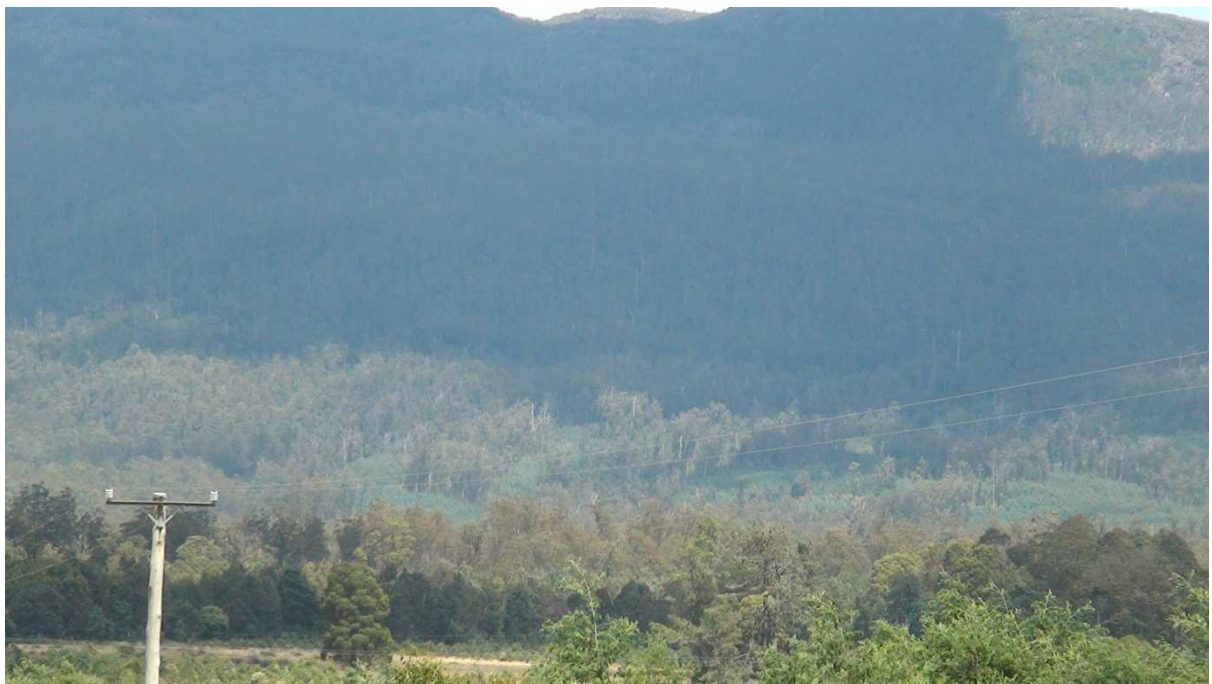


Figure 8 a variable retention coupe