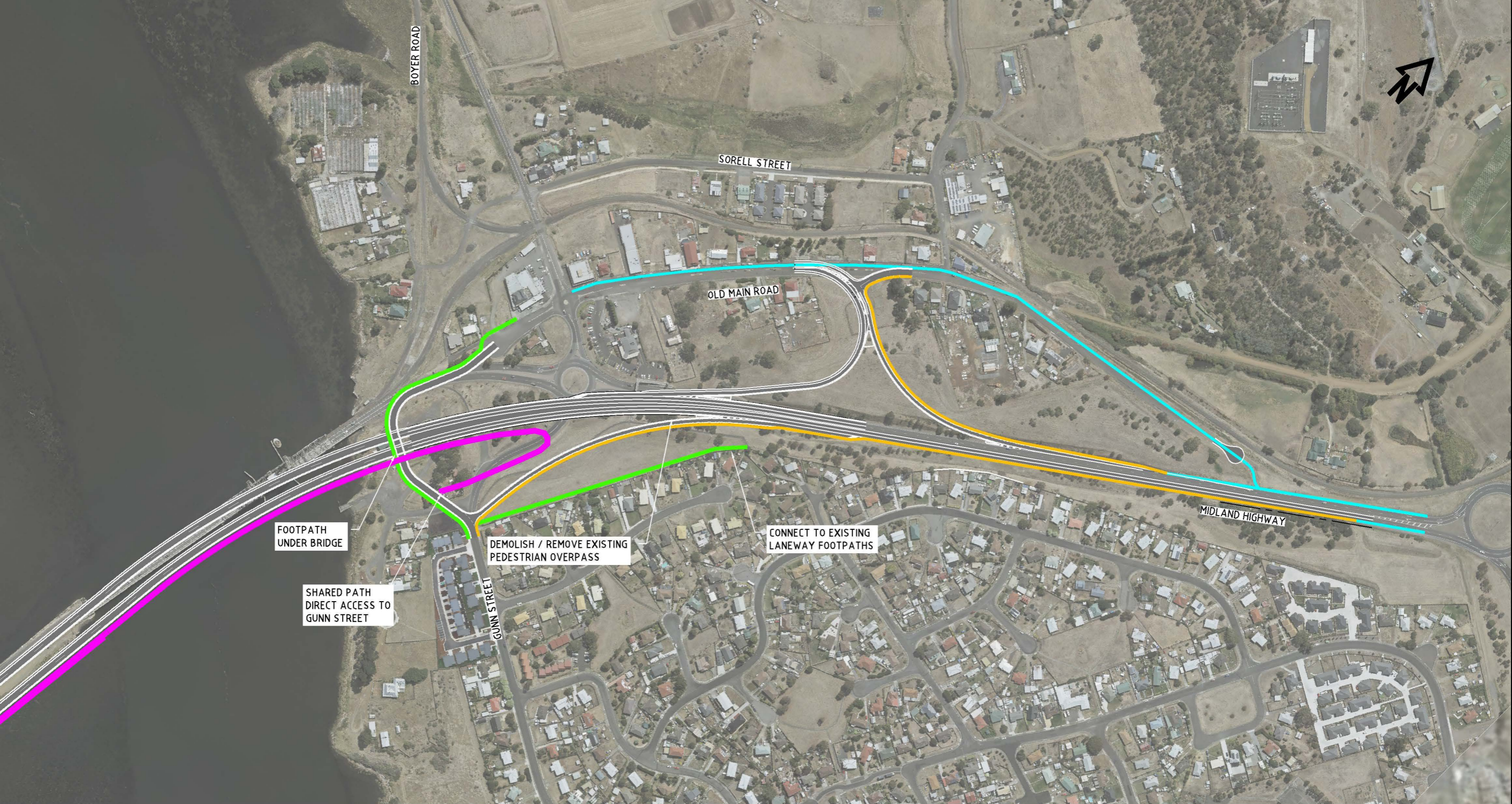


PEDESTRIAN AND CYCLE PATHS KEY

- 3.0m WIDE SHARED FOOTPATH/CYCLEWAY
- 1.5m WIDE FOOTPATH
- 1.0m MIN. WIDE SEALED SHOULDER
- EXISTING ROAD SHOULDER CYCLING ROUTE



New Bridgewater Bridge Reference Design
www.transport.tas.gov.au/newbridgewaterbridge



PEDESTRIAN AND CYCLE PATHS KEY

	3.0m WIDE SHARED FOOTPATH/CYCLEWAY
	1.5m WIDE FOOTPATH
	1.0m MIN. WIDE SEALED SHOULDER
	EXISTING ROAD SHOULDER CYCLING ROUTE