








ELEVATION & SECTION LEGEND

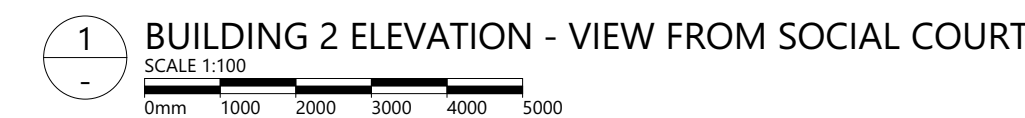
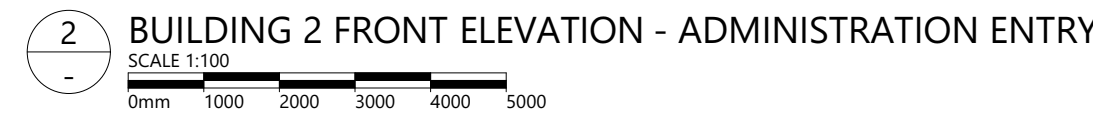
NOTES:
CONTRACTOR TO INSTALL ALL EXTERNAL CLADDING AND FINISHES IN STRICT ACCORDANCE WITH MANUFACTURERS SPECIFICATIONS, DETAILS AND RECOMMENDATIONS. BY APPROVED INSTALLERS WHERE NECESSARY.

ENSURE ALL EXTERNAL CLADDING AND FINISHES ARE INSTALLED TO ENSURE WATER TIGHT AND WEATHER PROOF FINISH. MAKE ALL ALLOWANCES FOR SEALANTS AND ACCESSORIES AS REQUIRED.

MAKE ALL NECESSARY ALLOWANCES TO MAKE GOOD TO EXISTING BUILDING FABRIC AFFECTED BY NEW WORKS.

EXTERIOR FINISHES LEGEND

| | | | |
|---|------------------------------------|---|---------------------------------|
|  | DULUX SWEET MANDARIN - S87C7 |  | DULUX RED BOX A61 |
|  | DULUX BLUE REGENT S37H8 |  | DULUX PHANTOM WHITE - SN3E1 |
|  | DULUX COLORBOND WINDSPRAY - C18 |  | DULUX COLORBOND BASALT - C30 |
|  | DULUX COLORBOND MONUMENT - C29 | | |



ELEVATION & SECTION LEGEND



ELEVATION & SECTION LEGEND

- NOTES:
- CONTRACTOR TO INSTALL ALL EXTERNAL CLADDING AND FINISHES IN STRICT ACCORDANCE WITH MANUFACTURERS SPECIFICATIONS, DETAILS AND RECOMMENDATIONS. BY APPROVED INSTALLERS WHERE NECESSARY.
- ENSURE ALL EXTERNAL CLADDING AND FINISHES ARE INSTALLED TO ENSURE WATER TIGHT AND WEATHER PROOF FINISH. MAKE ALL ALLOWANCES FOR SEALANTS AND ACCESSORIES AS REQUIRED.
- MAKE ALL NECESSARY ALLOWANCES TO MAKE GOOD TO EXISTING BUILDING FABRIC AFFECTED BY NEW WORKS.

EXTERIOR FINISHES LEGEND

EXTERIOR FINISHES LEGEND



EXTERIOR FINISHES LEGEND

ELEVATION & SECTION LEGEND

NOTES:








CONTRACTOR TO INSTALL ALL EXTERNAL CLADDING AND FINISHES IN STRICT ACCORDANCE WITH MANUFACTURERS SPECIFICATIONS, DETAILS AND RECOMMENDATIONS. BY APPROVED INSTALLERS WHERE NECESSARY.

ENSURE ALL EXTERNAL CLADDING AND FINISHES ARE INSTALLED TO ENSURE WATER TIGHT AND WEATHER PROOF FINISH. MAKE ALL ALLOWANCES FOR SEALANTS AND ACCESSORIES AS REQUIRED.

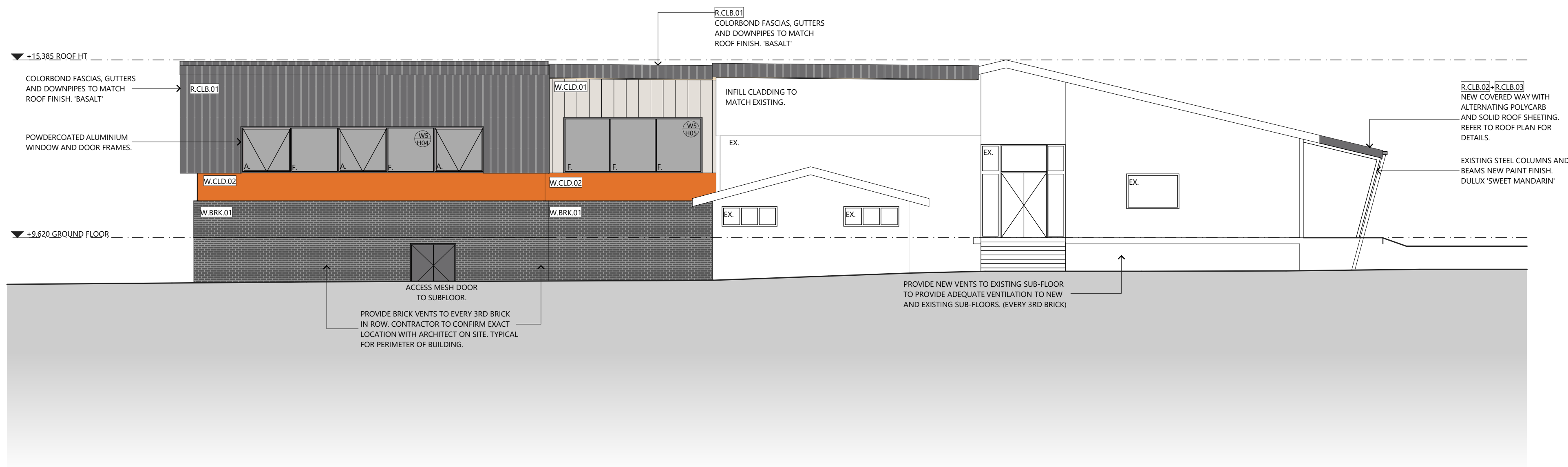
MAKE ALL NECESSARY ALLOWANCES TO MAKE GOOD TO EXISTING BUILDING FABRIC AFFECTED BY NEW WORKS.

ALL ARCHITECTURAL PLANS TO BE READ IN CONJUNCTION WITH THE INTERIOR FITOUT SCHEDULE. IN THE CASE OF DISCREPANCIES BETWEEN DRAWINGS, SPECIFICATIONS AND SCHEDULES THE CONTRACTOR IS INSTRUCTED TO CLARIFY SUCH ITEMS WITH THE ARCHITECT.

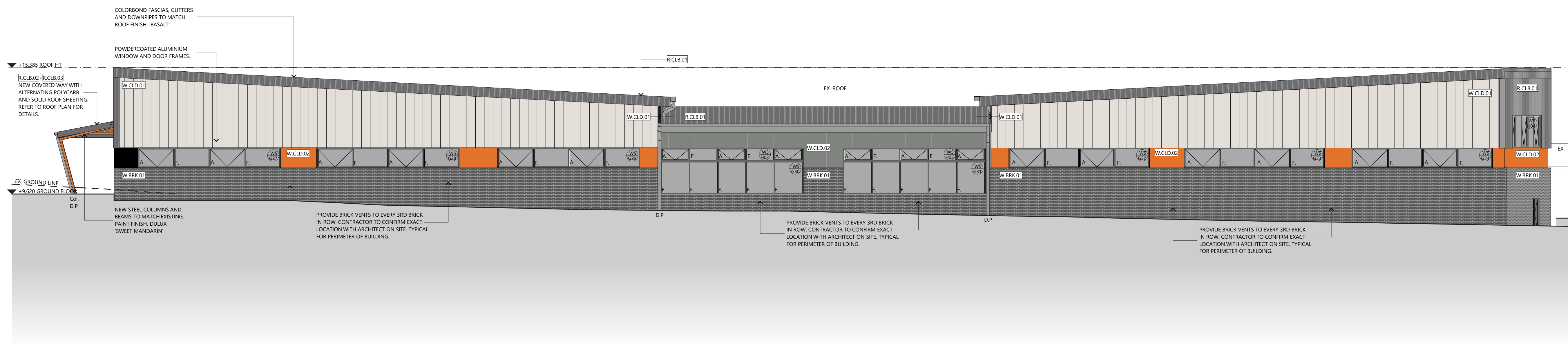
EXTERIOR FINISHES LEGEND

| | | | |
|---|------------------------------------|---|---------------------------------|
|  | DULUX SWEET MANDARIN - S87C7 |  | DULUX RED BOX A61 |
|  | DULUX BLUE REGENT S37H8 |  | DULUX PHANTOM WHITE - SN3E1 |
|  | DULUX COLORBOND WINDSPRAY - C18 |  | DULUX COLORBOND BASALT - C30 |
|  | DULUX COLORBOND MONUMENT - C29 | | |



[illegible]

2 BUILDING 5 ELEVATION - VIEW FROM OVAL
SCALE 1:100
0mm 1000 2000 3000 4000 5000



BUILDING 5 ELEVATION - VIEW FROM SOCCER FIELD
SCALE 1:100

0mm 1000 2000 3000 4000 5000

RIVERSIDE HIGH SCHOOL
DEPARTMENT OF EDUCATION

PRELIMINARY

171047

SHEET SIZE: A1 (LANDSCAPE)

A2103- P1

©COPYRIGHT THESE DRAWINGS AND THE DESIGNS ARE THE PROPERTY OF ARTAS ARCHITECTS AND MUST NOT BE REUSED, RETAINED OR COPIED WITHOUT WRITTEN PERMISSION FROM ARTAS ARCHITECTS (A.B.N. 75 009 583 644)

ARTAS
ARCHITECTS

