



# KINGSTON HEALTH CENTRE

42 CHANNEL HIGHWAY, KINGSTON 7050

PROJECT SUMMARY	
LGA:	KINGBOROUGH COUNCIL
ZONES:	COMMUNITY PURPOSE
USE:	BUSINESS AND PROFESSIONAL SERVICES
BUILDING CLASS:	CLASS 5
CONSTRUCTION TYPE:	TYPE B
TOTAL SITE AREA:	5697m <sup>2</sup>
EXISTING SITE COVERAGE:	NIL
PROPOSED SITE COVERAGE:	696m <sup>2</sup> (12%)
PROPOSED NEW PARKING:	34 (4 ACCESSIBLE)

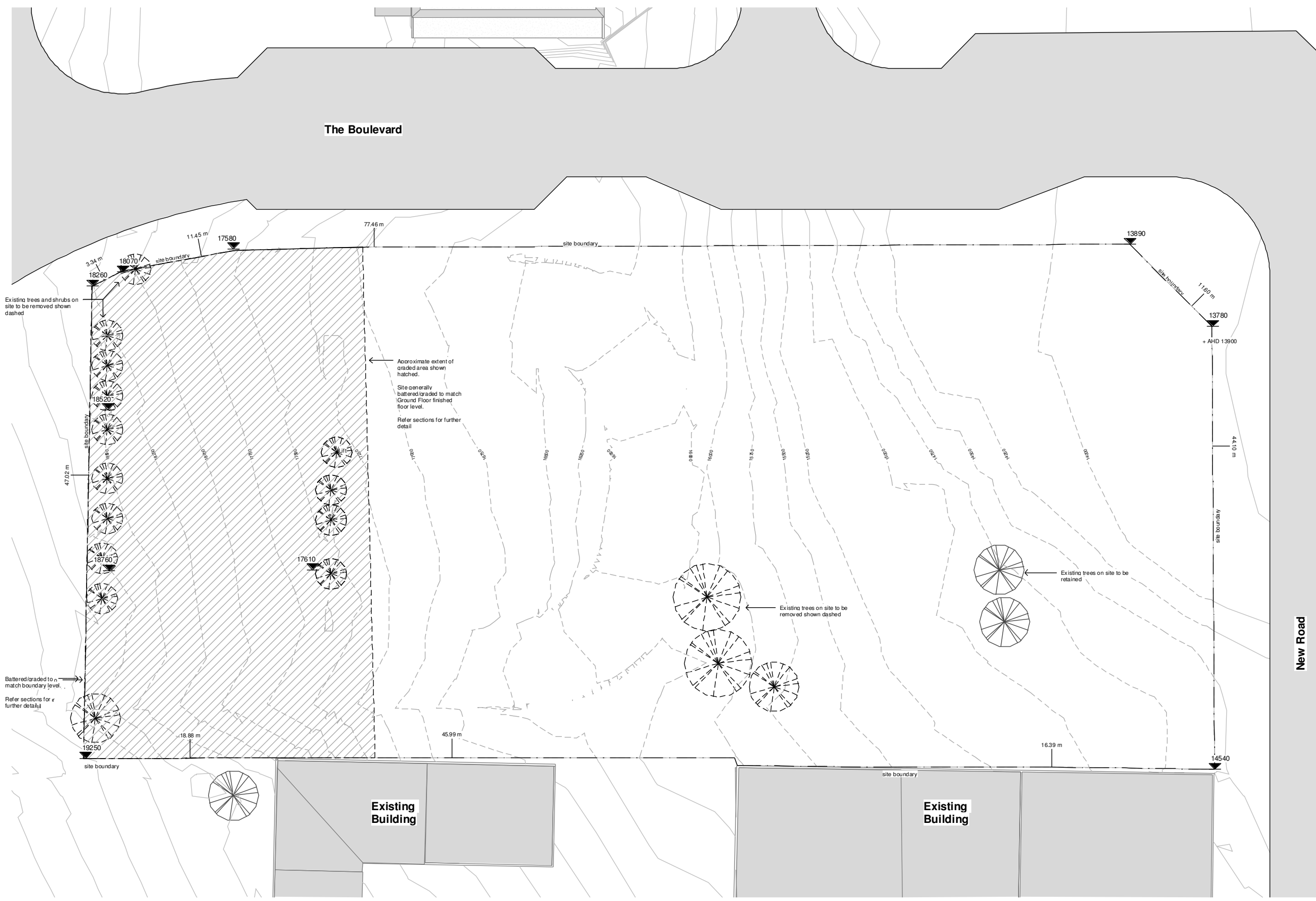
Number	Sheet Name	Rev
DD000	Title Page	A
DD001	Site Plan - Existing	A
DD002	Location Plan	A
DD003	Site Plan - Proposed	A
DD200	Floor Plan - Ground Floor	A
DD201	Floor Plan - First Floor	A
DD202	Roof Plan	A
DD300	Reflected Ceiling Plan - Ground Floor	A
DD301	Reflected Ceiling Plan - First Floor	A
DD400	Elevations	A
DD410	Perspectives	A
DD500	Sections	A
DD501	Sections	A
DD850	External Signage	A



PROJECT: Kingston Health Centre  
 ADDRESS: 42 Channel Highway, Kingston  
 CLIENT: DHHS  
 SHEET NAME: Title Page

PROJECT NUMBER: H1635  
 SCALE AT A1: 1 : 1  
 DRAWN BY: DD  
 DATE: 14.09.2017  
 SHEET: DD000 REV A





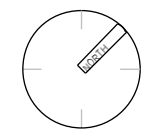
1 Site Plan - Existing  
 1 : 200



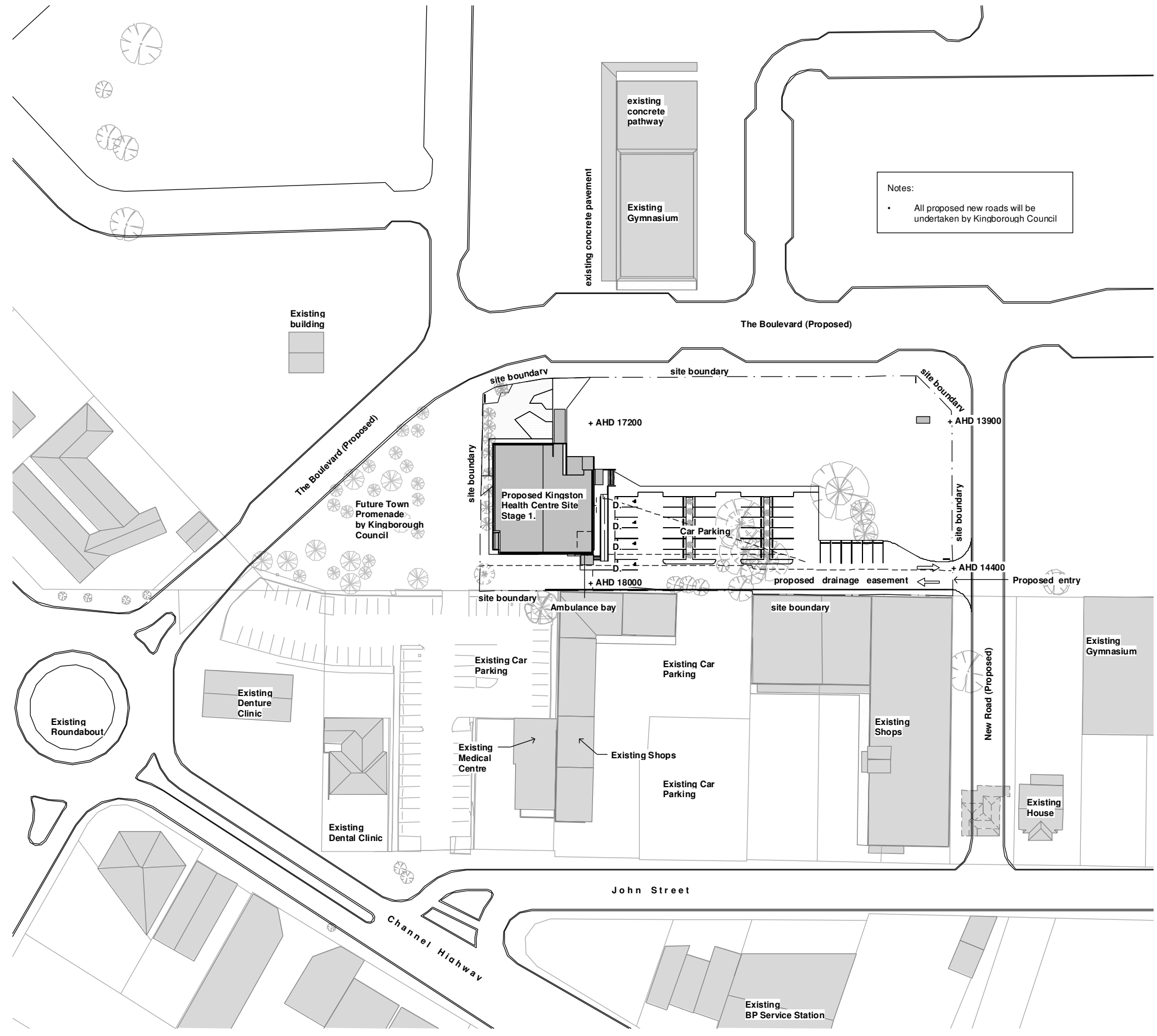
**BPSM** architects  
 Bush Parkes Shugg & Moon

PROJECT **Kingston Health Centre**  
 ADDRESS 42 Channel Highway, Kingston  
 CLIENT DHHS  
 SHEET NAME **Site Plan - Existing**

PROJECT NUMBER H1635  
 SCALE AT A1 1 : 200  
 DRAWN BY DD  
 DATE 14.09.2017  
 SHEET **DD001** REV **A**



THESE DESIGNS, PLANS AND SPECIFICATIONS AND THE COPYRIGHT ARE THE PROPERTY OF BPSM ARCHITECTS AND MUST NOT BE USED, REPRODUCED OR COPIED WHOLLY OR IN PART WITHOUT WRITTEN PERMISSION OF THE COMPANY



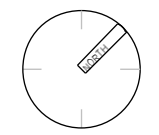
1 Location Plan  
 1 : 500



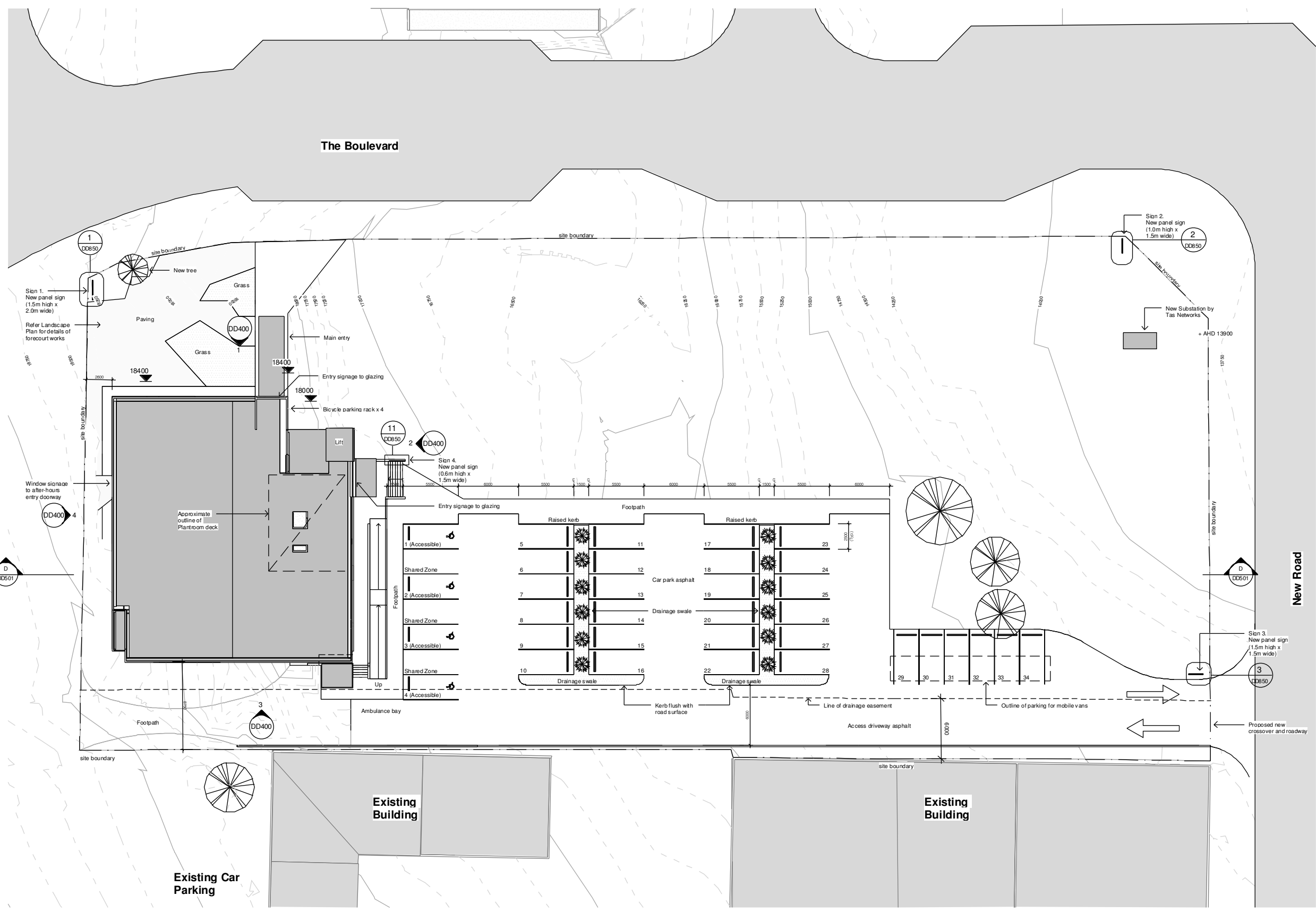
**BPSM** architects  
 Bush Parkes Shugg & Moon

PROJECT Kingston Health Centre  
 ADDRESS 42 Channel Highway, Kingston  
 CLIENT DHHS  
 SHEET NAME Location Plan

PROJECT NUMBER H1635  
 SCALE AT A1 1 : 500  
 DRAWN BY DD  
 DATE 14.09.2017  
 SHEET DD002 REV A



THESE DESIGNS, PLANS AND SPECIFICATIONS AND THE COPYRIGHT ARE THE PROPERTY OF BPSM ARCHITECTS AND MUST NOT BE USED, REPRODUCED OR COPIED WHOLLY OR IN PART WITHOUT WRITTEN PERMISSION OF THE COMPANY



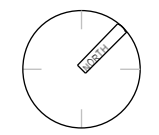
1 Site Plan - Proposed  
 1 : 200



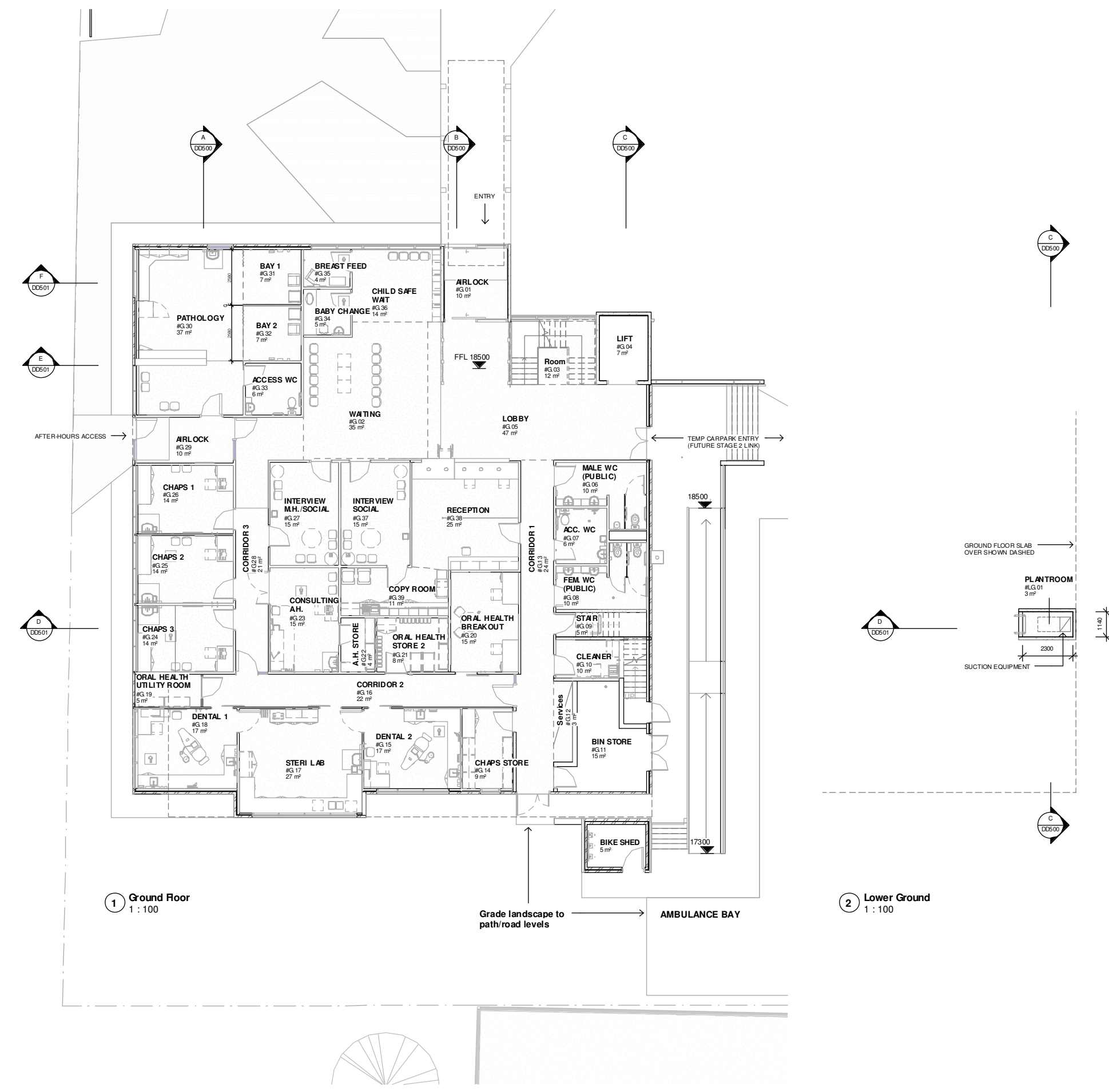
**BPSM** architects  
 Bush Parkes Shugg & Moon

PROJECT **Kingston Health Centre**  
 ADDRESS 42 Channel Highway, Kingston  
 CLIENT DHHS  
 SHEET NAME **Site Plan - Proposed**

PROJECT NUMBER H1635  
 SCALE AT A1 1 : 200  
 DRAWN BY Author  
 DATE 14.09.2017  
 SHEET **DD003** REV **A**



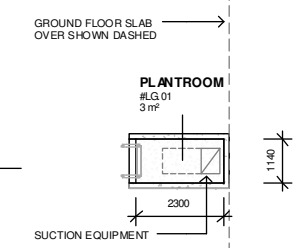
THESE DESIGNS, PLANS AND SPECIFICATIONS AND THE COPYRIGHT ARE THE PROPERTY OF BPSM ARCHITECTS AND MUST NOT BE USED, REPRODUCED OR COPIED WHOLLY OR IN PART WITHOUT WRITTEN PERMISSION OF THE COMPANY



1 Ground Floor  
1 : 100

2 Lower Ground  
1 : 100

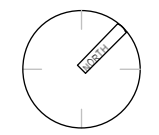
Room Schedule			
Name	Level	Area	Comments
PLANTROOM	LG	3 m <sup>2</sup>	
VOID	Ground Floor	1 m <sup>2</sup>	
BREAST FEED	Ground Floor	4 m <sup>2</sup>	
A.H. STORE	Ground Floor	4 m <sup>2</sup>	
BABY CHANGE	Ground Floor	5 m <sup>2</sup>	
ORAL HEALTH UTILITY ROOM	Ground Floor	5 m <sup>2</sup>	
STAIR	Ground Floor	5 m <sup>2</sup>	
BIKE SHED	Ground Floor	5 m <sup>2</sup>	
ACC. WC	Ground Floor	6 m <sup>2</sup>	
ACCESS WC	Ground Floor	6 m <sup>2</sup>	
LIFT	Ground Floor	7 m <sup>2</sup>	
BAY 2	Ground Floor	7 m <sup>2</sup>	
BAY 1	Ground Floor	7 m <sup>2</sup>	
ORAL HEALTH STORE 2	Ground Floor	8 m <sup>2</sup>	
CHAPS STORE	Ground Floor	9 m <sup>2</sup>	
AIRLOCK	Ground Floor	10 m <sup>2</sup>	
MALE WC (PUBLIC)	Ground Floor	10 m <sup>2</sup>	
FEM WC (PUBLIC)	Ground Floor	10 m <sup>2</sup>	
CLEANER	Ground Floor	10 m <sup>2</sup>	
AIRLOCK	Ground Floor	10 m <sup>2</sup>	
COPY ROOM	Ground Floor	11 m <sup>2</sup>	
Room	Ground Floor	12 m <sup>2</sup>	
CHAPS 1	Ground Floor	14 m <sup>2</sup>	
CHAPS 2	Ground Floor	14 m <sup>2</sup>	
CHAPS 3	Ground Floor	14 m <sup>2</sup>	
CHILD SAFE WAIT	Ground Floor	14 m <sup>2</sup>	
BIN STORE	Ground Floor	15 m <sup>2</sup>	
CONSULTING A.H.	Ground Floor	15 m <sup>2</sup>	
INTERVIEW SOCIAL	Ground Floor	15 m <sup>2</sup>	
INTERVIEW SOCIAL	Ground Floor	15 m <sup>2</sup>	
ORAL HEALTH BREAKOUT	Ground Floor	15 m <sup>2</sup>	
DENTAL 1	Ground Floor	17 m <sup>2</sup>	
DENTAL 2	Ground Floor	17 m <sup>2</sup>	
CORRIDOR 3	Ground Floor	21 m <sup>2</sup>	
CORRIDOR 2	Ground Floor	22 m <sup>2</sup>	
CORRIDOR 1	Ground Floor	24 m <sup>2</sup>	
RECEPTION	Ground Floor	25 m <sup>2</sup>	
STERI LAB	Ground Floor	27 m <sup>2</sup>	
WAITING	Ground Floor	35 m <sup>2</sup>	
PATHOLOGY	Ground Floor	37 m <sup>2</sup>	
PATHOLOGY	Ground Floor	37 m <sup>2</sup>	
LOBBY	Ground Floor	47 m <sup>2</sup>	
LOBBY	Ground Floor	47 m <sup>2</sup>	
Severals	LG	3 m <sup>2</sup>	
RISER	L1	1 m <sup>2</sup>	
RISER	L1	1 m <sup>2</sup>	
RISER	L1	2 m <sup>2</sup>	
LOCKERS	L1	6 m <sup>2</sup>	
ACC. WGS HW	L1	6 m <sup>2</sup>	
STORE	L1	6 m <sup>2</sup>	
STAIR	L1	6 m <sup>2</sup>	
LIFT	L1	7 m <sup>2</sup>	
STORE C/N	L1	7 m <sup>2</sup>	
STAFF TOILETS (MALE)	L1	9 m <sup>2</sup>	
VOID	L1	9 m <sup>2</sup>	
EQUIP. STORE	L1	10 m <sup>2</sup>	
FEM WC (PUBLIC)	L1	11 m <sup>2</sup>	
MALE WC (PUBLIC)	L1	11 m <sup>2</sup>	
PODIATRY WORKROOM	L1	11 m <sup>2</sup>	
STAIR	L1	12 m <sup>2</sup>	
STAFF TOILETS (FEMALE)	L1	14 m <sup>2</sup>	
MH OFFICE	L1	14 m <sup>2</sup>	
I.T.	L1	14 m <sup>2</sup>	
CORRIDOR 6	L1	14 m <sup>2</sup>	
PHYSIO TREATMENT 2	L1	15 m <sup>2</sup>	
PHYSIO TREATMENT 1	L1	15 m <sup>2</sup>	
CLINIC C/N	L1	15 m <sup>2</sup>	
TREATMENT (DOUBLE) C/N	L1	18 m <sup>2</sup>	
CORRIDOR 4	L1	18 m <sup>2</sup>	
PODIATRY	L1	19 m <sup>2</sup>	
OFFICE SW	L1	20 m <sup>2</sup>	
CORRIDOR 7	L1	20 m <sup>2</sup>	
SLB WAITING	L1	22 m <sup>2</sup>	
CORRIDOR 5	L1	23 m <sup>2</sup>	
STAFF	L1	29 m <sup>2</sup>	
CHAPS OFFICE	L1	39 m <sup>2</sup>	
OFFICE COMMUNITY NURSING	L1	40 m <sup>2</sup>	
MEETING ROOMS	L1	46 m <sup>2</sup>	
PHYSIO GYM	L1	51 m <sup>2</sup>	
Grandtotal:		77	1122 m <sup>2</sup>



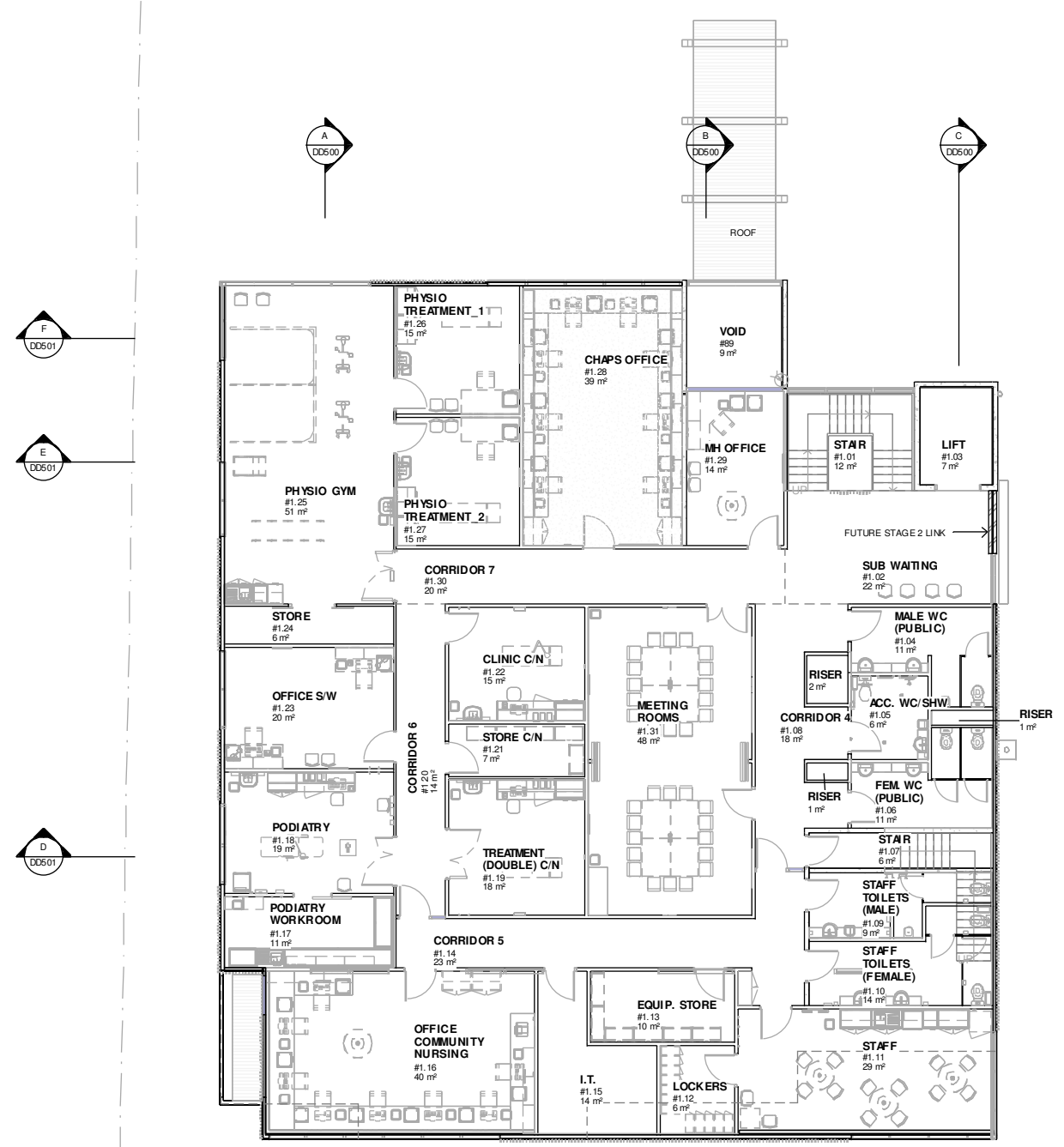
**BPSM** architects  
 Bush Parkes Shugg & Moon

PROJECT Kingston Health Centre  
 ADDRESS 42 Channel Highway, Kingston  
 CLIENT DHHS  
 SHEET NAME Floor Plan - Ground Floor

PROJECT NUMBER H1635  
 SCALE AT A1 1 : 100  
 DRAWN BY DD  
 DATE 14.09.2017  
 SHEET DD200 REV A



THESE DESIGNS, PLANS AND SPECIFICATIONS AND THE COPYRIGHT ARE THE PROPERTY OF BPSM ARCHITECTS AND MUST NOT BE USED, REPRODUCED OR COPIED WHOLLY OR IN PART WITHOUT WRITTEN PERMISSION OF THE COMPANY

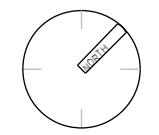


1 Level One  
 1 : 100

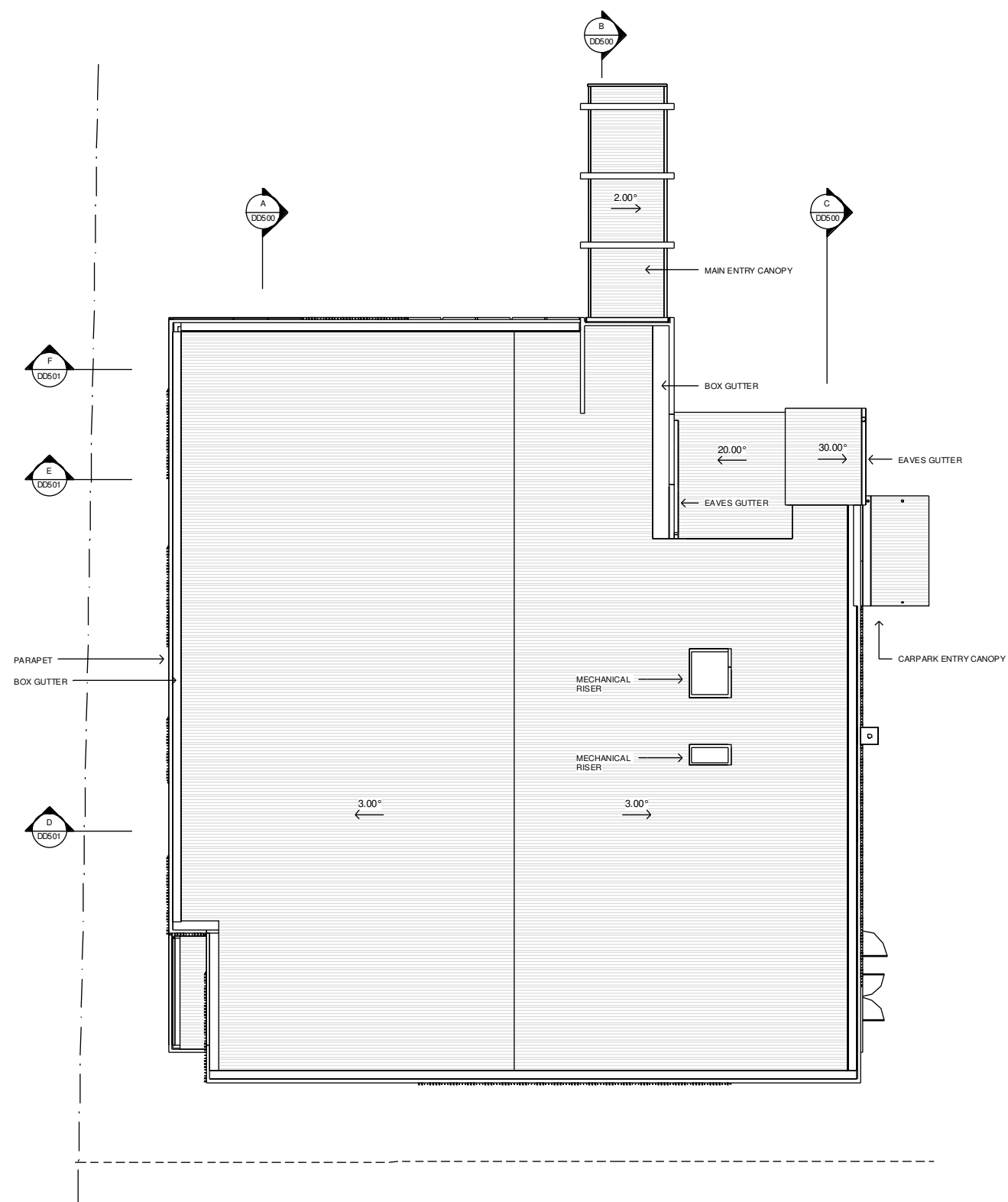


PROJECT Kingston Health Centre  
 ADDRESS 42 Channel Highway, Kingston  
 CLIENT DHHS  
 SHEET NAME Floor Plan - First Floor

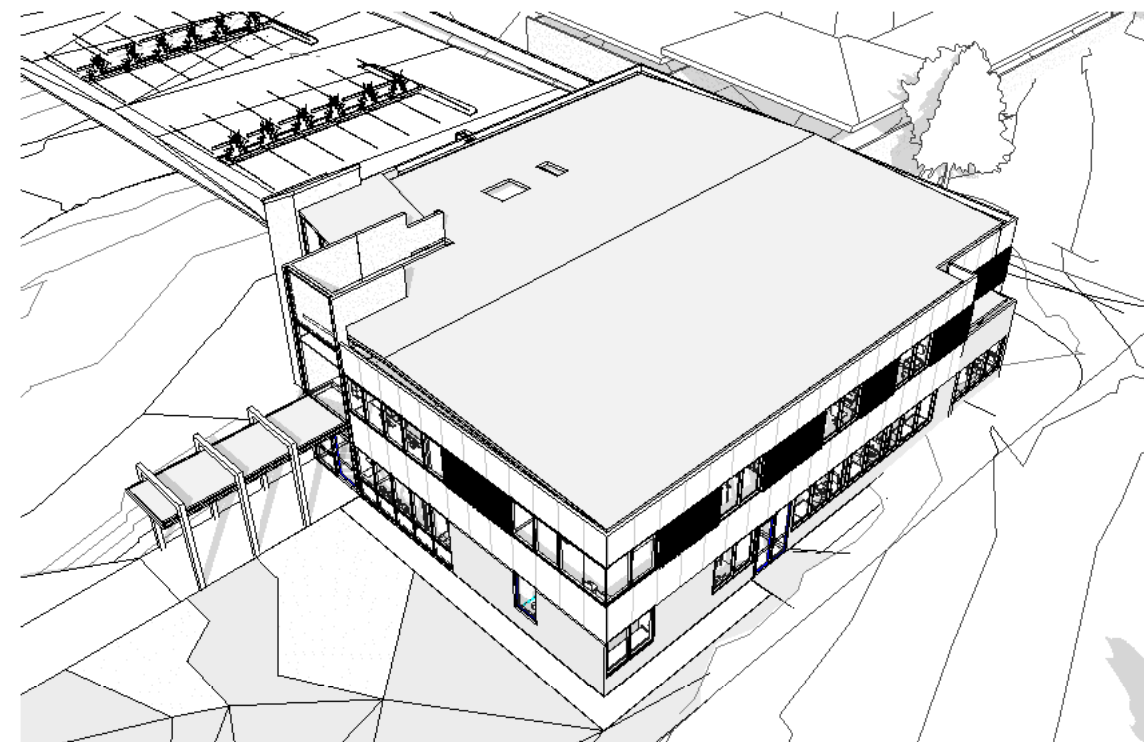
PROJECT NUMBER H1635  
 SCALE AT A1 1 : 100  
 DRAWN BY DD  
 DATE 14.09.2017  
 SHEET DD201 REV A



THESE DESIGNS, PLANS AND SPECIFICATIONS AND THE COPYRIGHT ARE THE PROPERTY OF BPSM ARCHITECTS AND MUST NOT BE USED, REPRODUCED OR COPIED WHOLLY OR IN PART WITHOUT WRITTEN PERMISSION OF THE COMPANY



1 Roof Plan  
1 : 100

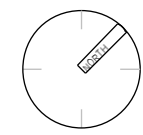


2 Perspective Roof

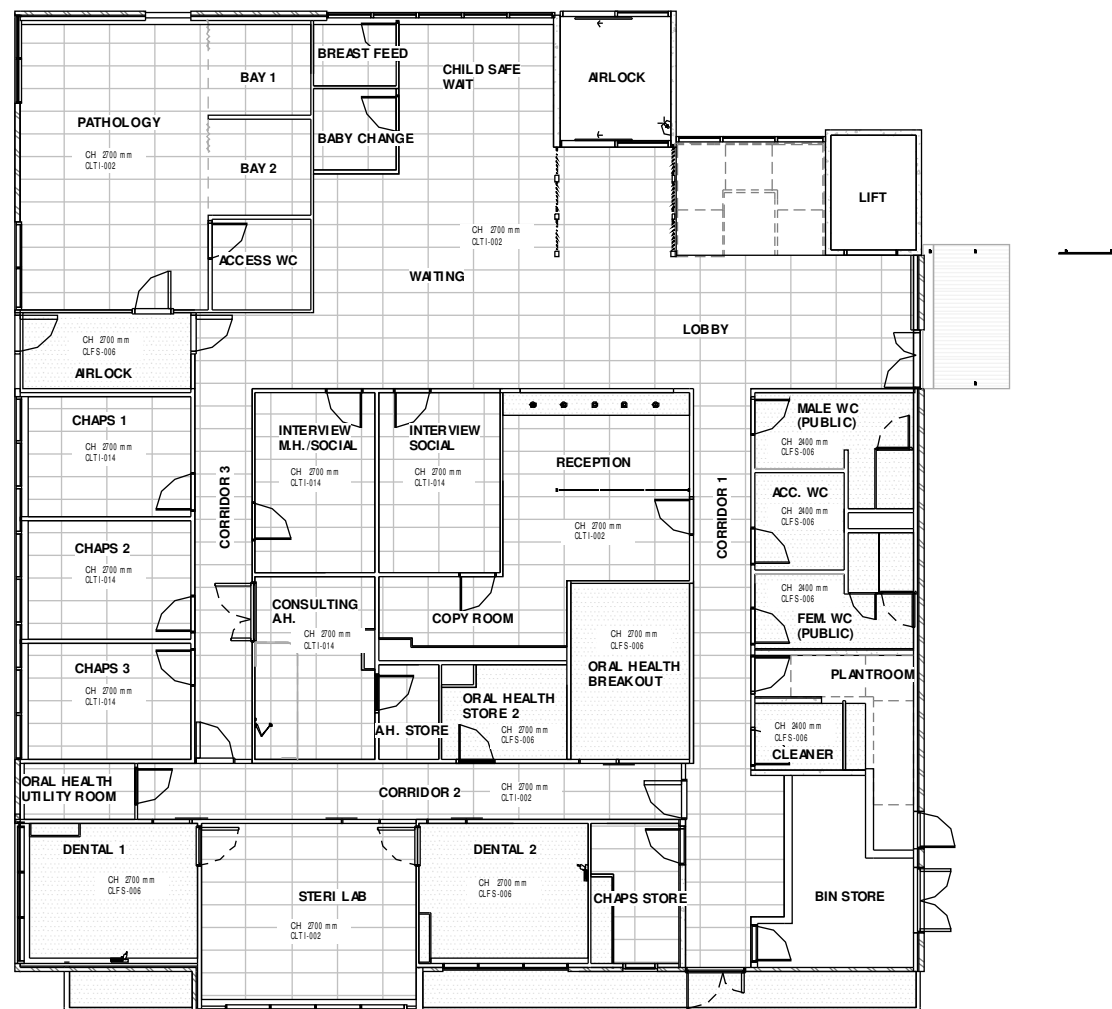


PROJECT **Kingston Health Centre**  
 ADDRESS 42 Channel Highway, Kingston  
 CLIENT DHHS  
 SHEET NAME **Roof Plan**

PROJECT NUMBER H1635  
 SCALE AT A1 1 : 100  
 DRAWN BY DD  
 DATE 14.09.2017  
 SHEET **DD202** REV **A**



THESE DESIGNS, PLANS AND SPECIFICATIONS AND THE COPYRIGHT ARE THE PROPERTY OF BPSM ARCHITECTS AND MUST NOT BE USED, REPRODUCED OR COPIED WHOLLY OR IN PART WITHOUT WRITTEN PERMISSION OF THE COMPANY



REFLECTED CEILING PLAN - GROUND FLOOR  
1 : 100



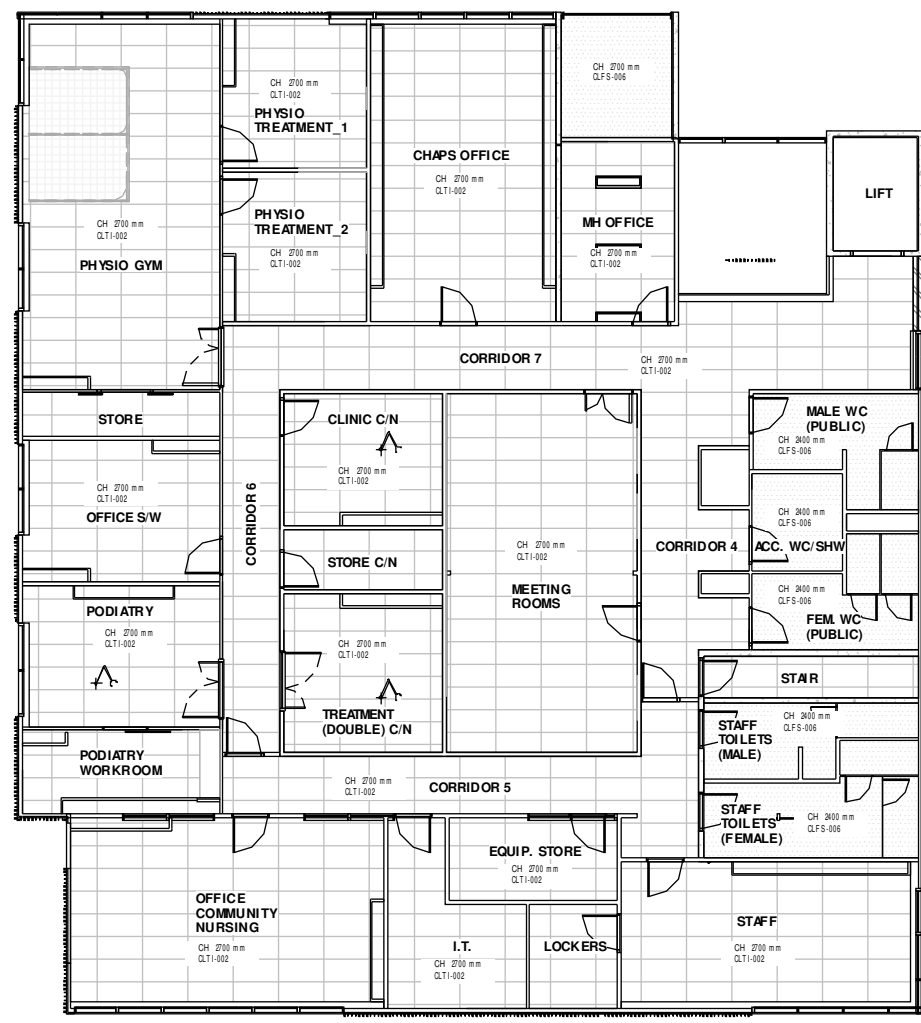
**BPSM** architects  
Bush Parkes Shugg & Moon

PROJECT Kingston Health Centre  
ADDRESS 42 Channel Highway, Kingston  
CLIENT DHHS  
SHEET NAME Reflected Ceiling Plan - Ground Floor

PROJECT NUMBER H1635  
SCALE AT A1 1 : 100  
DRAWN BY Author  
DATE 14.09.2017  
SHEET DD300 REV A





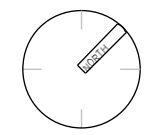


1 REFLECTED CEILING PLAN - FIRST FLOOR  
1 : 100

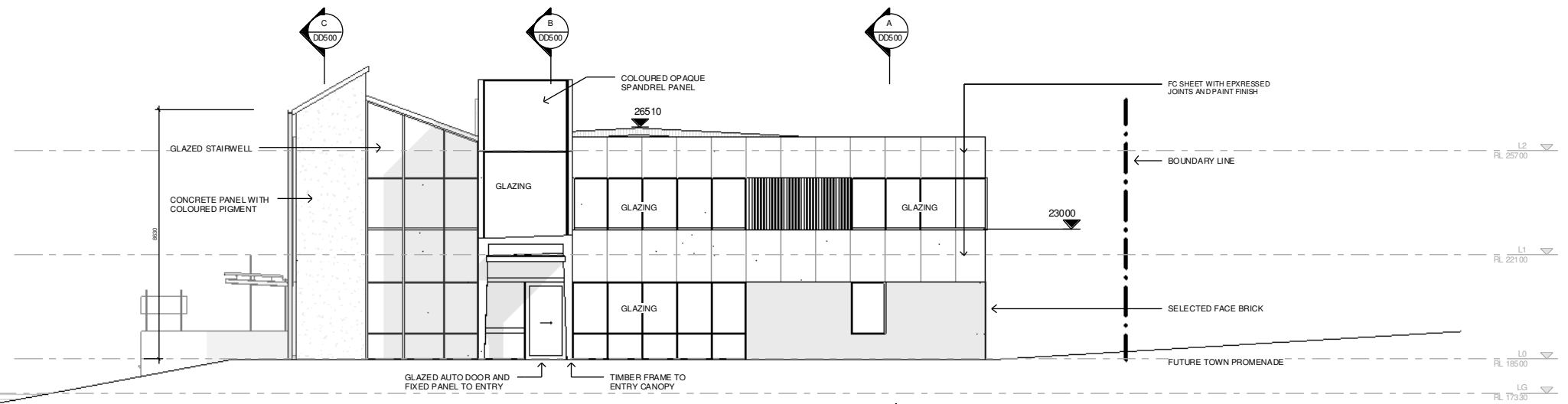


**BPSM** architects  
Bush Parkes Shugg & Moon

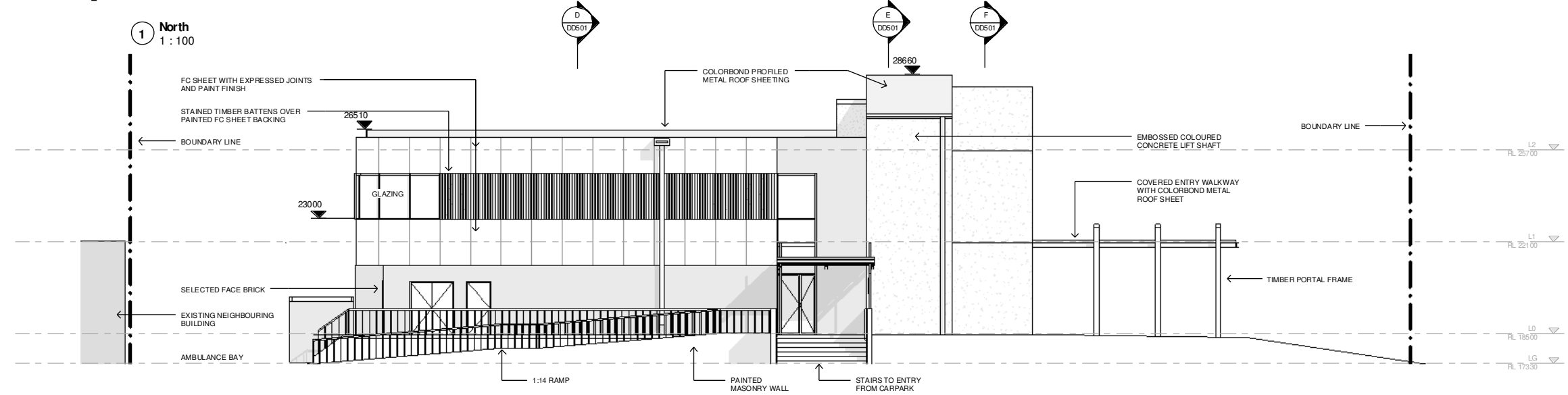
PROJECT	Kingston Health Centre
ADDRESS	42 Channel Highway, Kingston
CLIENT	DHHS
SHEET NAME	Reflected Ceiling Plan - First Floor
PROJECT NUMBER	H1635
SCALE AT A1	1 : 100
DRAWN BY	Author
DATE	14.09.2017
SHEET	DD301 REV A



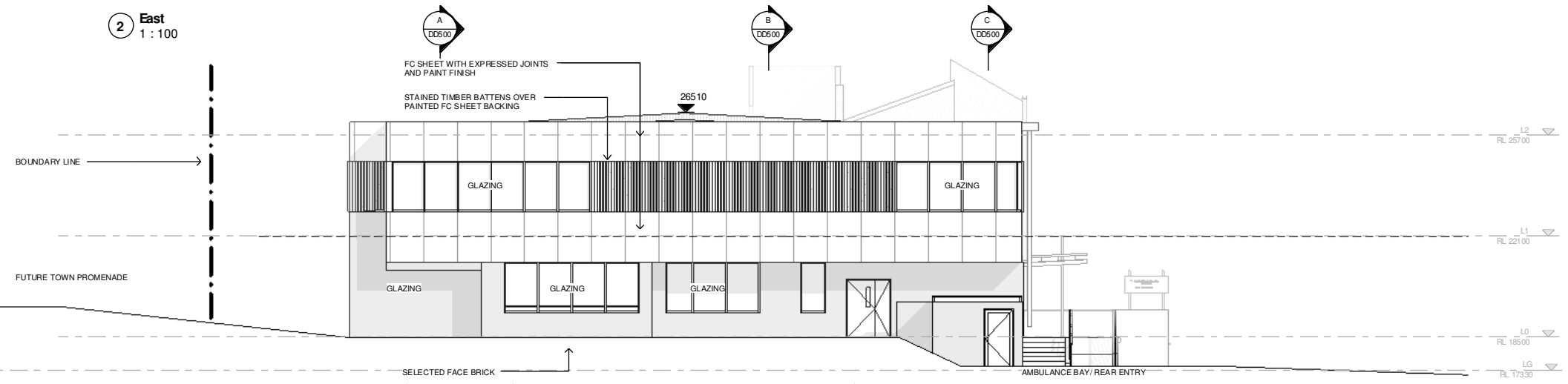
THESE DESIGNS, PLANS AND SPECIFICATIONS AND THE COPYRIGHT ARE THE PROPERTY OF BPSM ARCHITECTS AND MUST NOT BE USED, REPRODUCED OR COPIED WHOLLY OR IN PART WITHOUT WRITTEN PERMISSION OF THE COMPANY



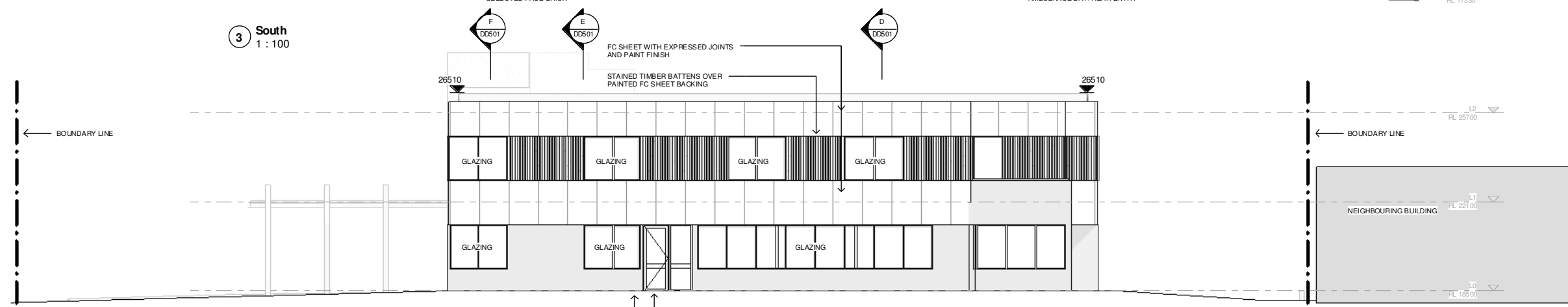
1 North  
1 : 100



2 East  
1 : 100



3 South  
1 : 100



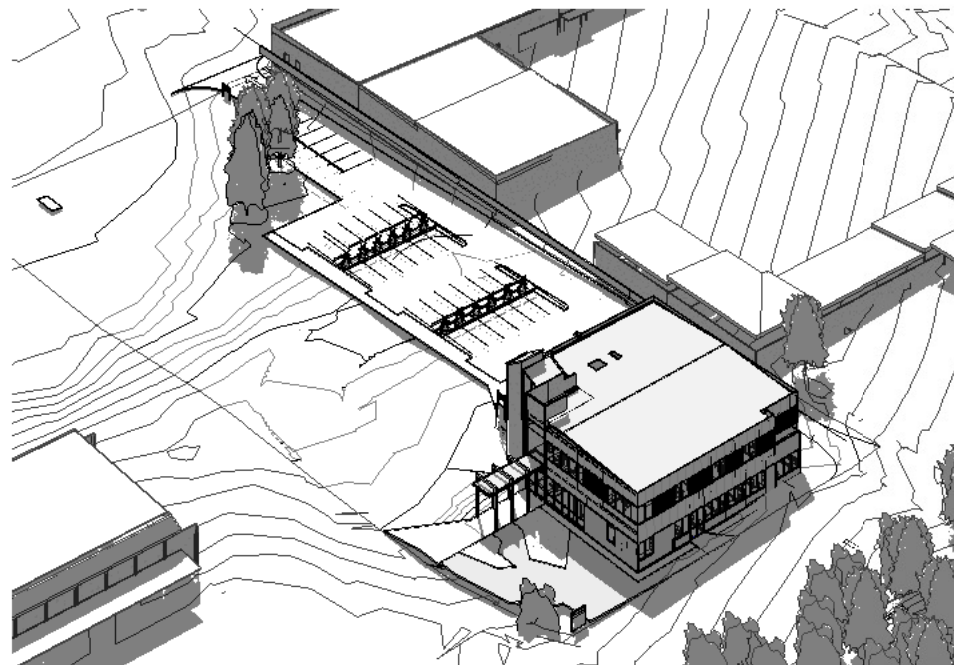
4 West  
1 : 100



**BPSM** architects  
 Bush Parkes Shugg & Moon

PROJECT	Kingston Health Centre
ADDRESS	42 Channel Highway, Kingston
CLIENT	DHHS
SHEET NAME	Elevations
PROJECT NUMBER	H1635
SCALE AT A1	1 : 100
DRAWN BY	DD
DATE	14.09.2017
SHEET	DD400 REV A

THESE DESIGNS, PLANS AND SPECIFICATIONS AND THE COPYRIGHT ARE THE PROPERTY OF BPSM ARCHITECTS AND MUST NOT BE USED, REPRODUCED OR COPIED WHOLLY OR IN PART WITHOUT WRITTEN PERMISSION OF THE COMPANY



A Aerial View 01



B Entry View 01



C Entry View 02



D South West Corner



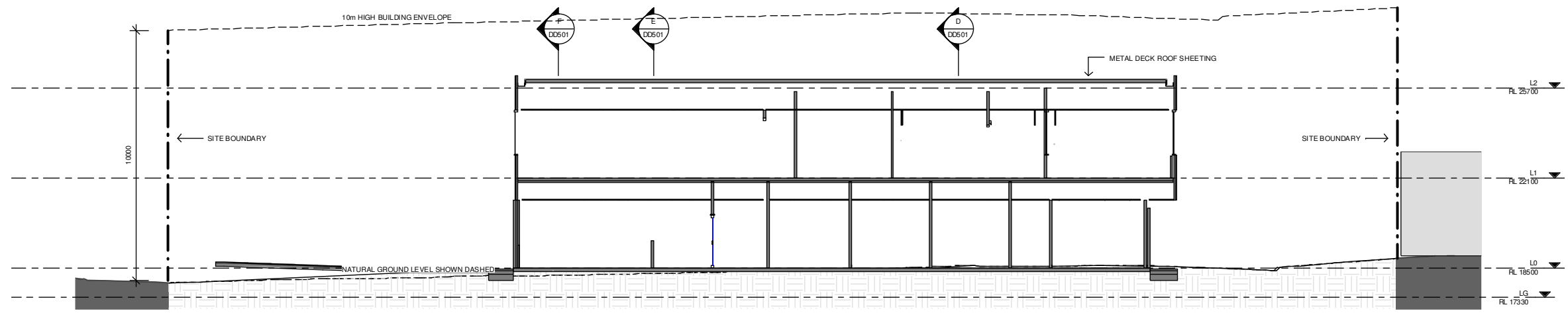
**BPSM** architects  
 Bush Parkes Shugg & Moon

PROJECT **Kingston Health Centre**  
 ADDRESS 42 Channel Highway, Kingston  
 CLIENT DHHS  
 SHEET NAME **Perspectives**

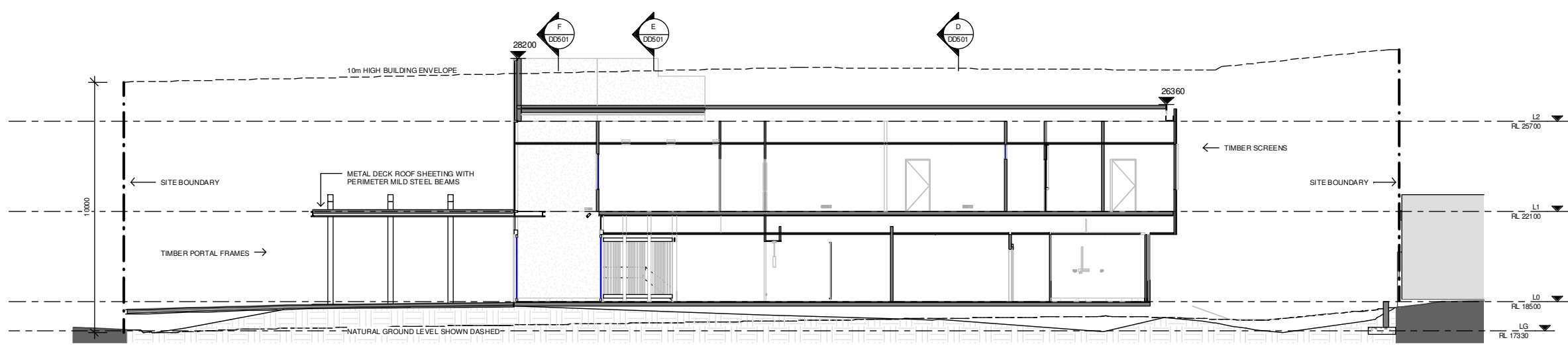
PROJECT NUMBER H1635  
 SCALE AT A1  
 DRAWN BY DD  
 DATE 14.09.2017  
 SHEET **DD410 REV A**



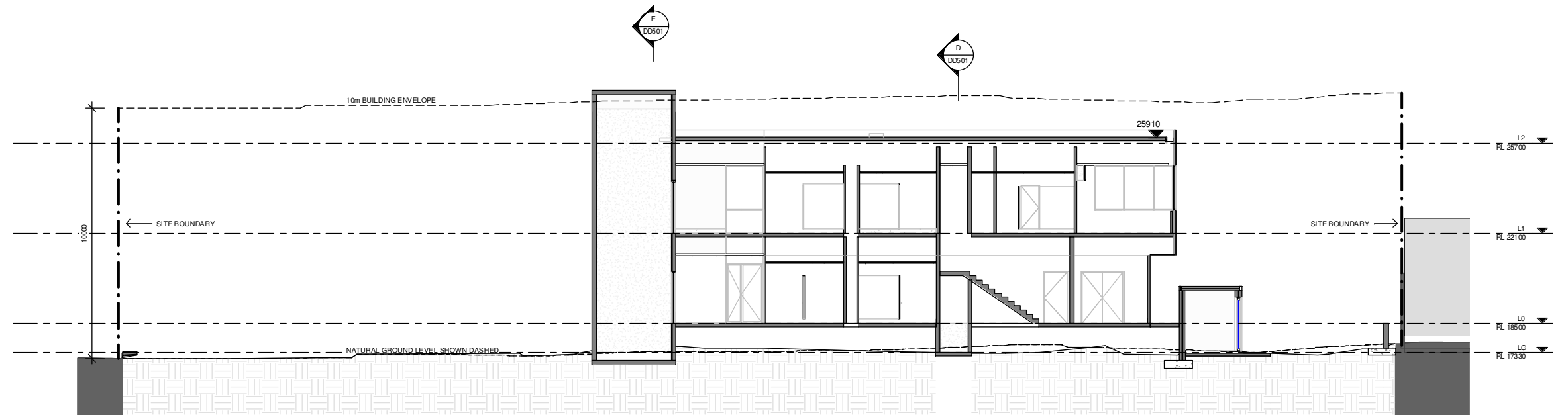
THESE DESIGNS, PLANS AND SPECIFICATIONS AND THE COPYRIGHT ARE THE PROPERTY OF BPSM ARCHITECTS AND MUST NOT BE USED, REPRODUCED OR COPIED WHOLLY OR IN PART WITHOUT WRITTEN PERMISSION OF THE COMPANY



**A** Section A  
1 : 100



**B** Section B  
1 : 100



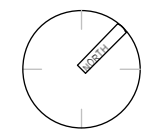
**C** Section C  
1 : 100



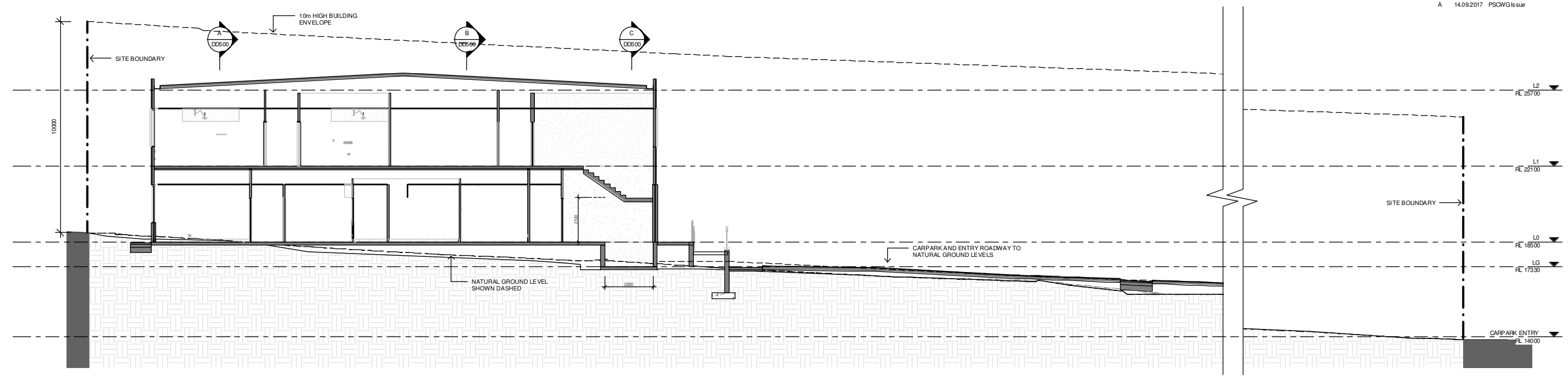
**BPSM** architects  
 Bush Parkes Shugg & Moon

PROJECT **Kingston Health Centre**  
 ADDRESS 42 Channel Highway, Kingston  
 CLIENT DHHS  
 SHEET NAME **Sections**

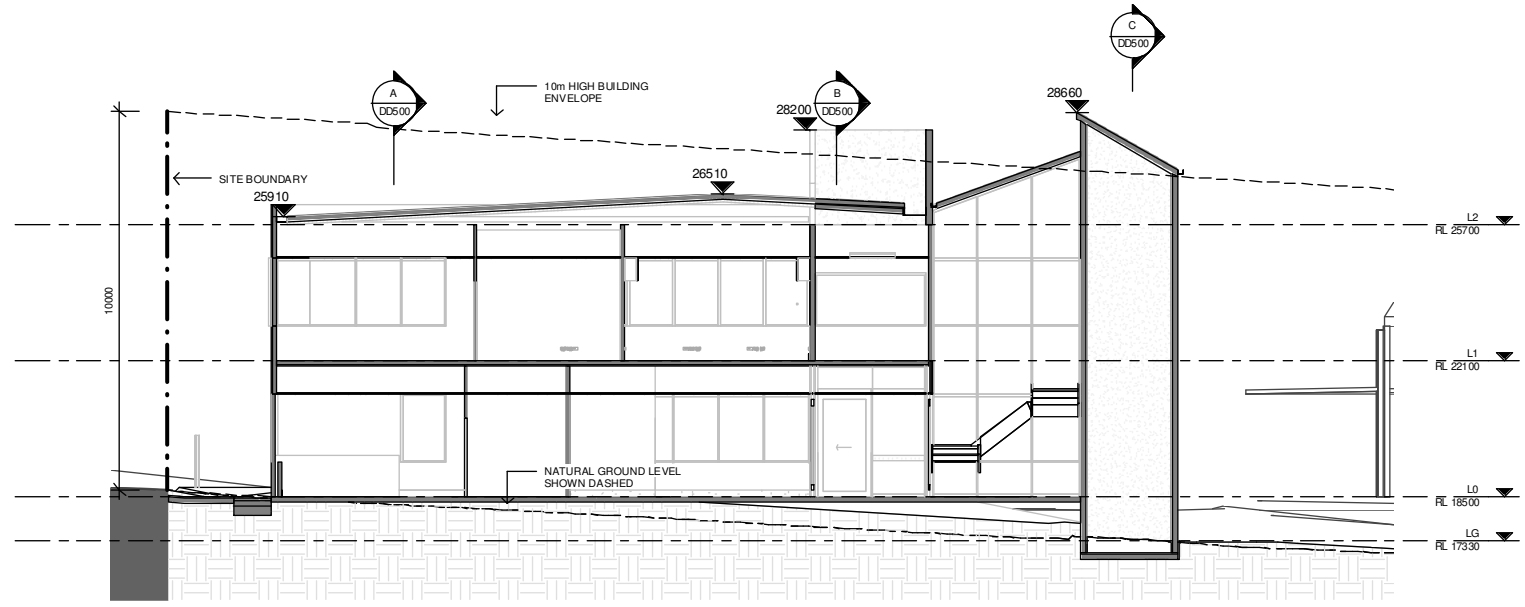
PROJECT NUMBER H1635  
 SCALE AT A1 1 : 100  
 DRAWN BY DD  
 DATE 14.09.2017  
 SHEET **DD500 REV A**



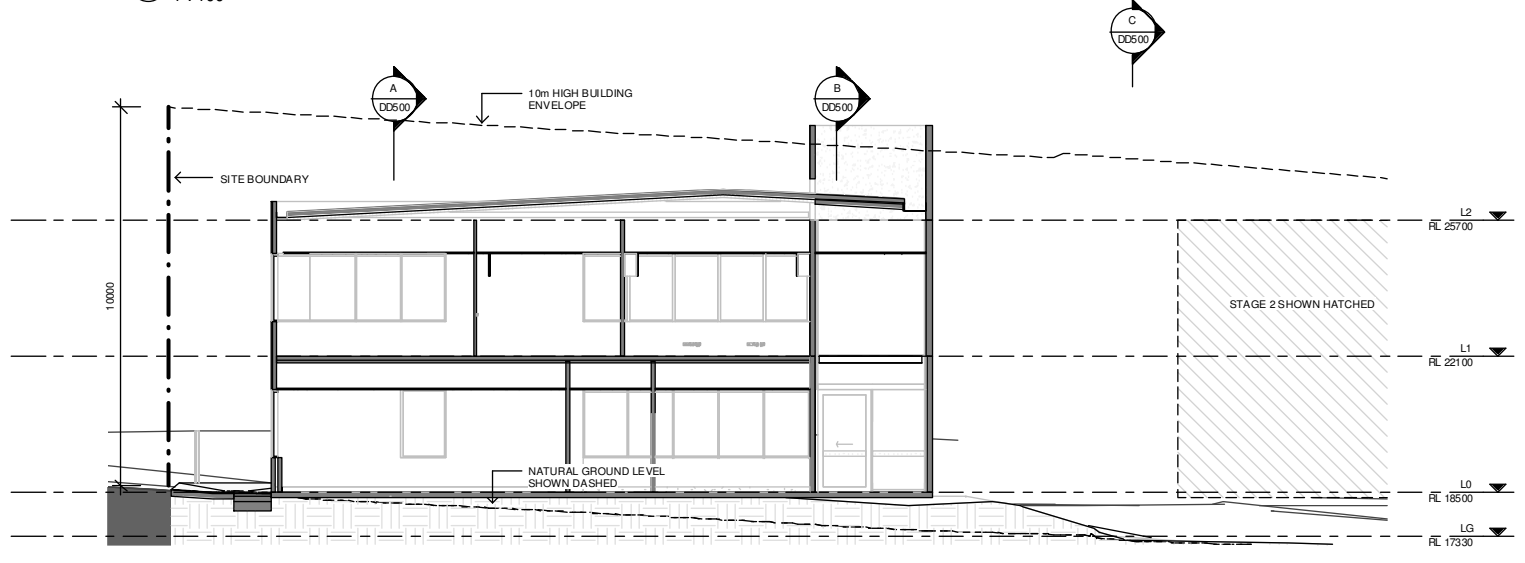
THESE DESIGNS, PLANS AND SPECIFICATIONS AND THE COPYRIGHT ARE THE PROPERTY OF BPSM ARCHITECTS AND MUST NOT BE USED, REPRODUCED OR COPIED WHOLLY OR IN PART WITHOUT WRITTEN PERMISSION OF THE COMPANY



**D Section D**  
1 : 100



**E Section E**  
1 : 100

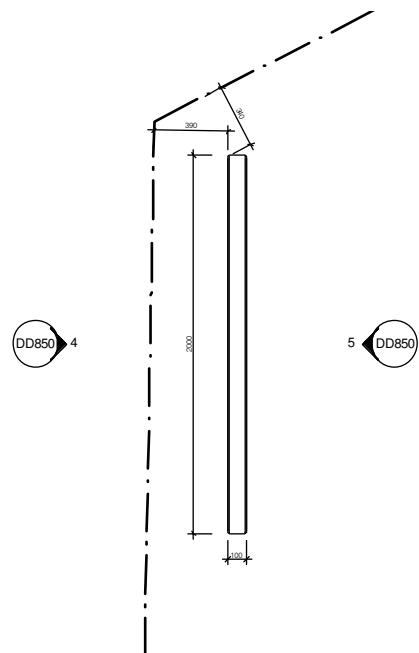


**F Section F**  
1 : 100

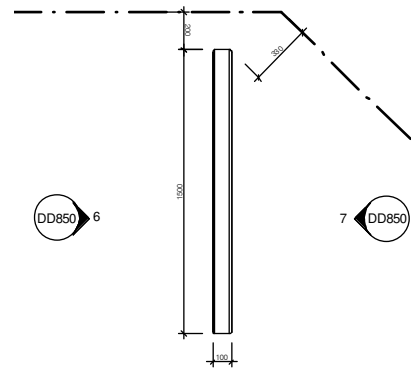


PROJECT	Kingston Health Centre
ADDRESS	42 Channel Highway, Kingston
CLIENT	DHHS
SHEET NAME	Sections
PROJECT NUMBER	H1635
SCALE AT A1	1 : 100
DRAWN BY	DD
DATE	14.09.2017
SHEET	DD501 REV A

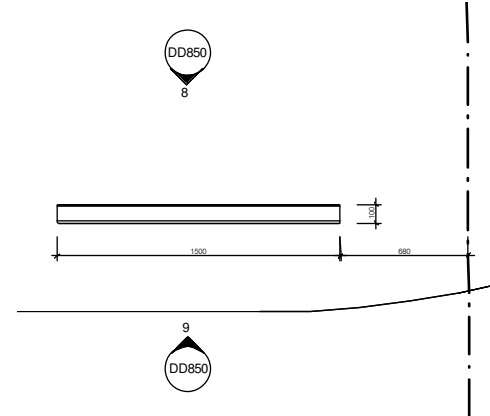
THESE DESIGNS, PLANS AND SPECIFICATIONS AND THE COPYRIGHT ARE THE PROPERTY OF BPSM ARCHITECTS AND MUST NOT BE USED, REPRODUCED OR COPIED WHOLLY OR IN PART WITHOUT WRITTEN PERMISSION OF THE COMPANY



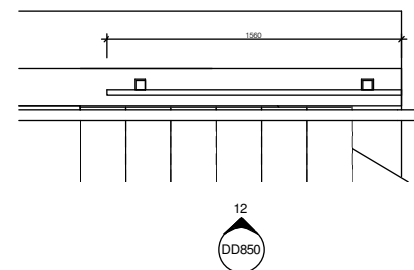
1 Plan - Sign 1  
1 : 20



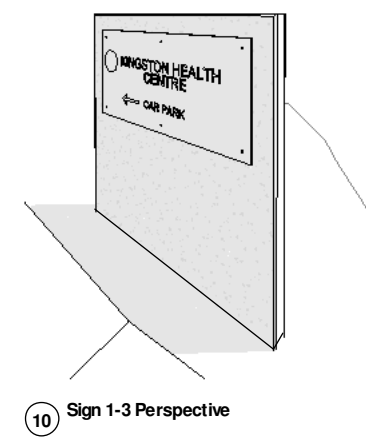
2 Plan - Sign 2  
1 : 20



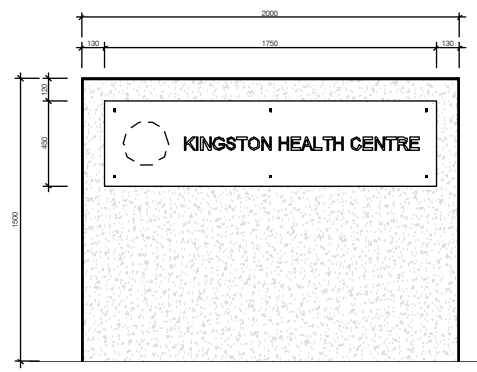
3 Plan - Sign 3  
1 : 20



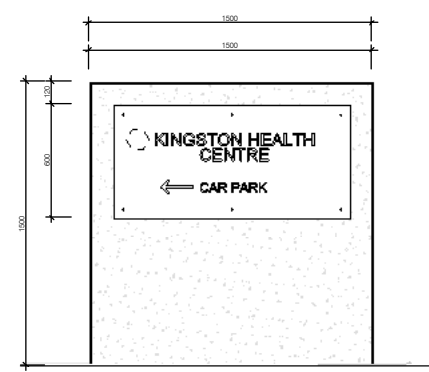
11 Sign 4 - East Reception Entry  
1 : 20



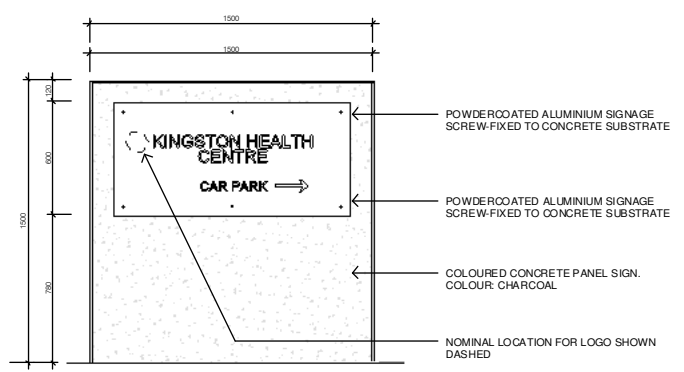
10 Sign 1-3 Perspective



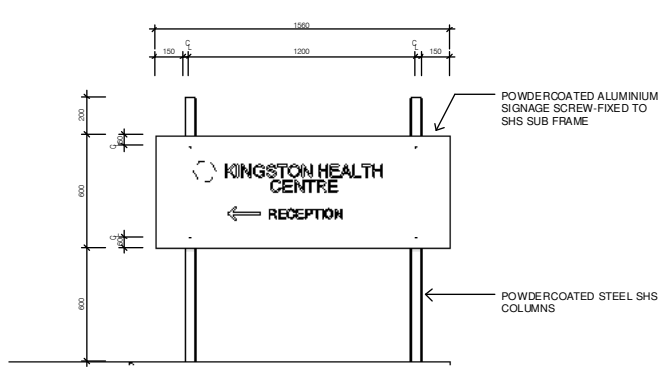
4 Sign 1 - A  
1 : 20



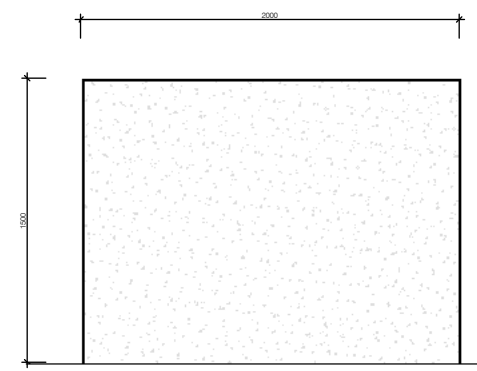
7 Sign 2 - B  
1 : 20



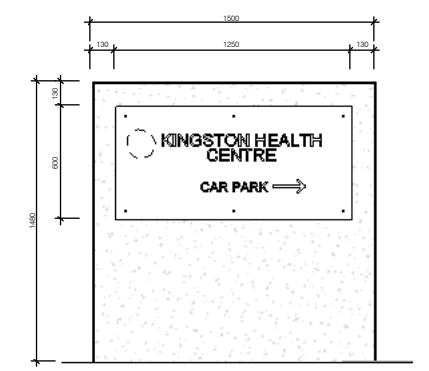
8 Sign 3 - A  
1 : 20



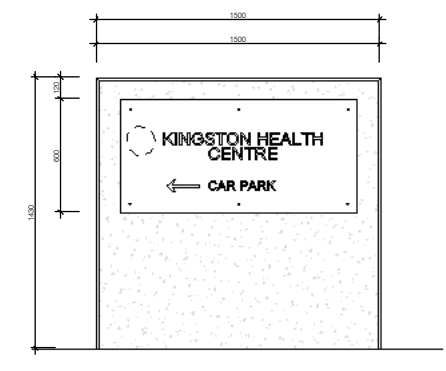
12 Sign 4  
1 : 20



5 Sign 1 - B  
1 : 20



6 Sign 2 - A  
1 : 20



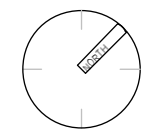
9 Sign 3 - B  
1 : 20



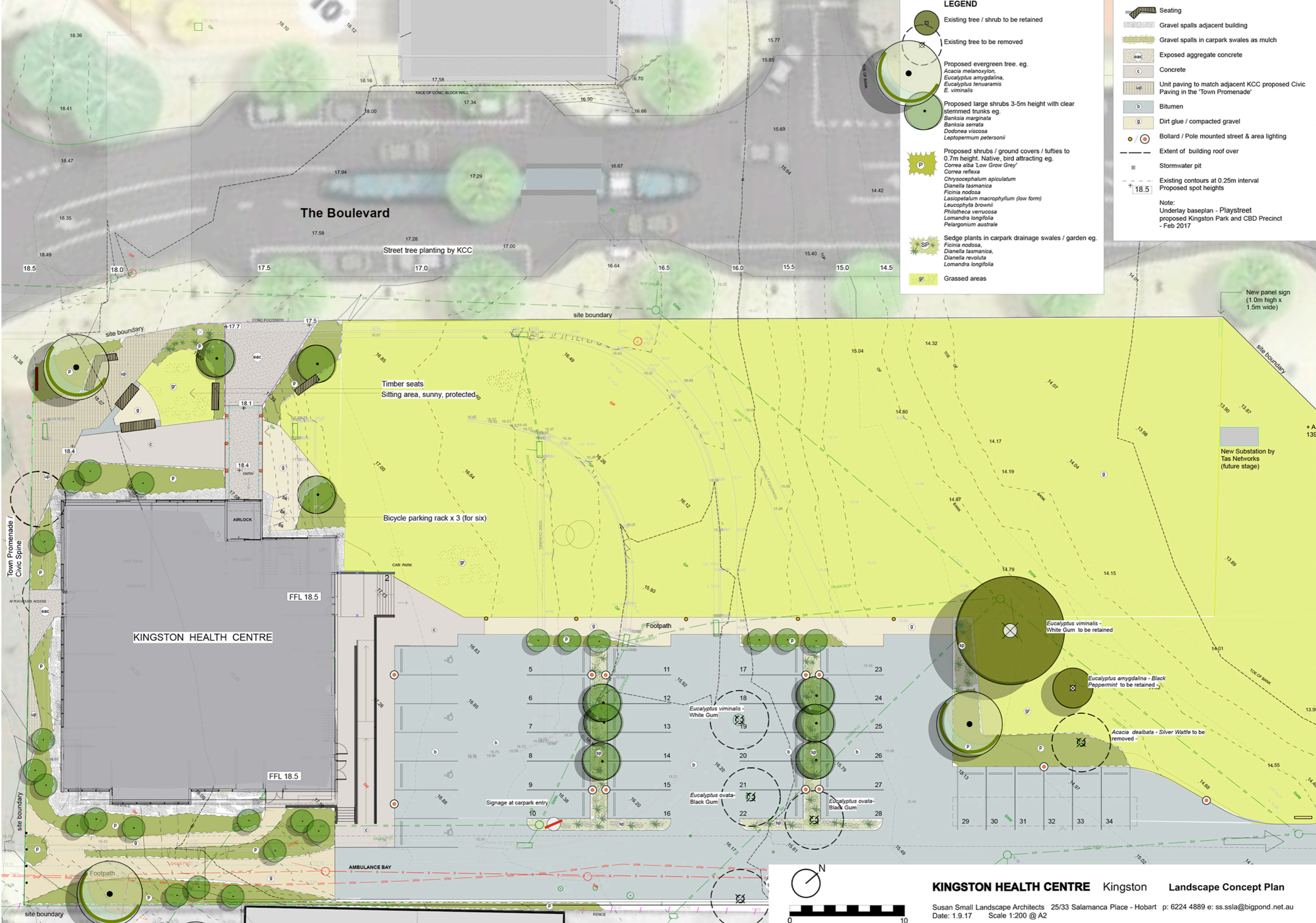
**BPSM** architects  
 Bush Parkes Shugg & Moon

PROJECT Kingston Health Centre  
 ADDRESS 42 Channel Highway, Kingston  
 CLIENT DHHS  
 SHEET NAME External Signage

PROJECT NUMBER H1635  
 SCALE AT A1 1 : 20  
 DRAWN BY DD  
 DATE 14.09.2017  
 SHEET DD850 REV A



THESE DESIGNS, PLANS AND SPECIFICATIONS AND THE COPYRIGHT ARE THE PROPERTY OF BPSM ARCHITECTS AND MUST NOT BE USED, REPRODUCED OR COPIED WHOLLY OR IN PART WITHOUT WRITTEN PERMISSION OF THE COMPANY



**LEGEND**

- Existing tree / shrub to be retained
- Existing tree to be removed
- Proposed evergreen tree. eg. *Acacia melanoxylon*, *Eucalyptus amygdalina*, *Eucalyptus tenuararis*, *E. viminalis*
- Proposed large shrubs 3-5m height with clear stemmed trunks eg. *Banksia marginata*, *Banksia serrata*, *Dodonea viscosa*, *Leptopernum petersonii*
- Proposed shrubs / ground covers / tufties to 0.7m height. Native, bird attracting eg. *Correa alba* 'Low Grow Grey', *Correa reflexa*, *Chrysocephalum apiculatum*, *Dianella tasmanica*, *Ficinia nodosa*, *Lasiopetalum macrophyllum* (low form), *Leucophyta brownii*, *Philothea verrucosa*, *Lomandra longifolia*, *Pelargonium australe*
- Sedge plants in carpark drainage swales / garden eg. *Ficinia nodosa*, *Dianella tasmanica*, *Dianella revoluta*, *Lomandra longifolia*
- Grassed areas

- Seating
- Gravel spalls adjacent building
- Gravel spalls in carpark swales as mulch
- Exposed aggregate concrete
- Concrete
- Unit paving to match adjacent KCC proposed Civic Paving in the 'Town Promenade'
- Bitumen
- Dirt glue / compacted gravel
- Bollard / Pole mounted street & area lighting
- Extent of building roof over
- Stormwater pit
- Existing contours at 0.25m interval  
Proposed spot heights

Note:  
Underlay baseplan - Playstreet  
proposed Kingston Park and CBD Precinct  
- Feb 2017

**The Boulevard**

Street tree planting by KCC

Timber seats  
Sitting area, sunny, protected

Bicycle parking rack x 3 (for six)

**KINGSTON HEALTH CENTRE**

FFL 18.5

FFL 18.5

Signage at carpark entry

Footpath

*Eucalyptus viminalis* - White Gum to be retained

*Eucalyptus amygdalina* - Black Peppermint to be retained

*Acacia dealbata* - Silver Wattle to be removed

*Eucalyptus viminalis* - White Gum

*Eucalyptus ovata* - Black Gum

*Eucalyptus ovata* - Black Gum