

BRIGHTON HIGH SCHOOL
BRIGHTON

SCHEMATIC DESIGN PRESENTATION 03
29.09.2021

LEARNING SETTINGS & INTERIORS



JAWSARCHITECTS

K 2 L D



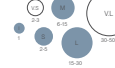
LEARNING SETTINGS

LEARNING SETTINGS RECAP

1. LEARNING GALLERY

(display of learning resources + student work)

Max Occupants: 30 Students
Suggested Area: 30m²



- physically connected
- acoustically contained
- visually connected
- focused + direction lighting
- line of sight for passive supervision
- room to move between groups
- unobstructed space
- fixed + adaptable partitions for 2D display
- horizontal surfaces + display cases for 3D

Learning Activities

- display
- exchange
- engage with learning artefacts to access information & communicate
- celebrate learning

Learning Relationships / Group Configurations



2. STUDY PODS - CAVE

(quiet reflective activities and / or individual research)

Max Occupants: 3 Students
Suggested Area: 1-5m²

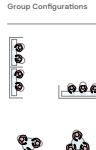


- physically sheltered (semi-enclosed) / enclosed
- acoustically contained / separate
- quiet
- visually connected
- task specific lighting / controllable lighting
- line of sight for passive supervision
- adjacent to passive learning settings + spaces
- layouts may include individuals working at a shared bench (sheltered zone) or small groups collaborating together at a small table
- inviting, comfortable furniture / generous work surfaces
- power / data / wi-fi

Learning Activities

- engaging with written and graphic material in digital and hard-copy text
- personally reflect
- enquire
- research
- reflective
- consolidate learning

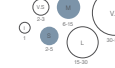
Learning Relationships / Group Configurations



3. COMMUNITY OF INQUIRY - CAMPFIRE

(dialogue, storytelling, community of inquiry)

Max Occupants: 15 Students
Suggested Area: 37.5m²

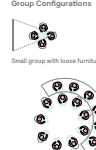


- physically sheltered (semi-enclosed) / cosy
- acoustically contained
- visually screened (minimal visual distractions)
- controllable lighting
- line of sight for passive supervision
- display space

Learning Activities

- explore ideas
- share + develop opinions
- listen to stories + oral presentations / discuss issues
- participants seated in the round, face-to-face

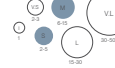
Learning Relationships / Group Configurations



4. DISCUSSION INCUBATOR - CAMPFIRE

(conduct meetings, virtual conferencing and small seminars)

Max Occupants: 15 Students
Suggested Area: 15-20m²

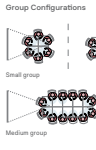


- physically enclosed
- acoustically separate
- visually connected
- controllable lighting
- line of sight for passive supervision
- adaptable, comfortable furniture
- power / data / wi-fi / video conference
- presentation surface / AV display with good lines of sight
- writable walls / tabletop
- secure storage

Learning Activities

- plan
- discuss
- make decisions
- collaborate in a quiet, focused environment
- meet virtually
- private student-teacher conference
- individual tutoring
- peer to peer learning

Learning Relationships / Group Configurations



5. SHARED LEARNING COMMONS - WATERING HOLE

(structured and free-form collaboration and indoor games)

Max Occupants: 30-60 Students
Suggested Area: 100m²



- connected to other spaces
- informal
- open & accessible to all
- acoustically contained
- visually connected
- good natural light
- line of sight for passive supervision
- unobstructed space + adaptable / moveable furniture
- adaptable furniture for groups of 2-8
- power / data / wi-fi / video conference
- mobile resource storage + docking points

Learning Activities

- structured or informal collaborative activities
- collaborate spontaneously at time of need
- engage in games
- simultaneous separate groups
- breakout space

Learning Relationships / Group Configurations



6. DIGITAL POD - HANDS-ON

(engage in creative activities with media, general + specialised equipment + exploration)

Max Occupants: 15 Students
Suggested Area: 45m²



- physically sheltered (semi-enclosed) / acoustically contained
- visually connected
- task specific lighting
- line of sight for passive supervision
- room to move between groups
- adaptable tables / work benches
- some general settings / some with specialist equipment
- power / data / wi-fi
- accessible storage + secure storage
- mobile resource storage + docking points

Learning Activities

- hands on interaction, reflection, generating ideas
- exploration to design, create, express, evaluate + display
- various media digital media (including motion graphics, sounds design, composition + editing)
- multiple collaborative groups working in one area

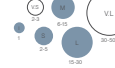
Learning Relationships / Group Configurations



7. MAKER / CREATOR SPACE - HANDS-ON

(construction, modelling + simulation through play-based learning and / or authentic settings)

Max Occupants: 15 Students
Suggested Area: 45m²



- physically separate + secure / some sheltered (semi-enclosed)
- acoustically separate / some contained
- visually connected
- task specific lighting
- line of sight for passive supervision
- room to move between groups
- durable, washable surfaces + flooring
- adaptable tables / work benches / standing / sitting / stools
- some general settings / some with specialist equipment
- power / data / wi-fi
- accessible storage + secure storage
- mobile resource storage + docking points

Learning Activities

- implement
- build
- assemble in indoor + outdoor learning environments using materials, systems and media
- various media: visual art (2D + 3D)

Learning Relationships / Group Configurations



8. PERFORMANCE SPACE - MOUNTAIN TOP

(rehearsal + performance in the arts, languages + physical activity, neighbourhood + community, celebration, exhibitions + gatherings)

Max Occupants: 50+ Students
Suggested Area: 100-200m²



- physically connected + enclosed
- acoustically connected / contained
- visually connected
- line of sight for passive supervision
- special purpose fit-out
- presentation / performance space
- comfortable space for audience
- large unobstructed space
- accessible storage + secure storage
- for specialised resources + equipment
- power / data / wi-fi / AV display

Learning Activities

- practice
- refine
- execute performance-based activity in 'rehearsal' and purposefully designed settings
- gather for community building activities

Learning Relationships / Group Configurations



9. HOME BASE

(direct explicit teaching, demonstration, presentation)

Max Occupants: 30 Students
Suggested Area: 50-70m²



- physically enclosed or permeable + connected
- acoustically separate
- visually connected
- adaptable, comfortable furniture / generous work surfaces
- power / data / wi-fi
- resource storage
- clear circulation
- presentation surface / AV display with good lines of sight
- writable walls

Learning Activities

- demonstrate
- model
- communicate ideas
- teach explicitly
- more than one teacher working with separate groups simultaneously in the same space

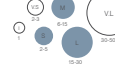
Learning Relationships / Group Configurations



10. EXTERNAL LEARNING - HANDS-ON

(engage in investigative activities with general + specialised equipment, theory linked to practice)

Max Occupants: 30 Students
Suggested Area: 50-70m²

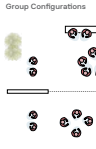


- physically permeable + connected to the internal learning spaces
- visually connected
- engaging with learning landscape (furni, flora)
- transition with the internal learning spaces
- under-cover space

Learning Activities

- Hands on interaction
- Experimentation
- communicate ideas
- teach explicitly
- students as researchers
- testing
- gaming

Learning Relationships / Group Configurations



11. INVESTIGATION LAB - HANDS-ON

(engage in investigative activities with general + specialised equipment, theory linked to practice)

Max Occupants: 30 Students
Suggested Area: 80-100m²



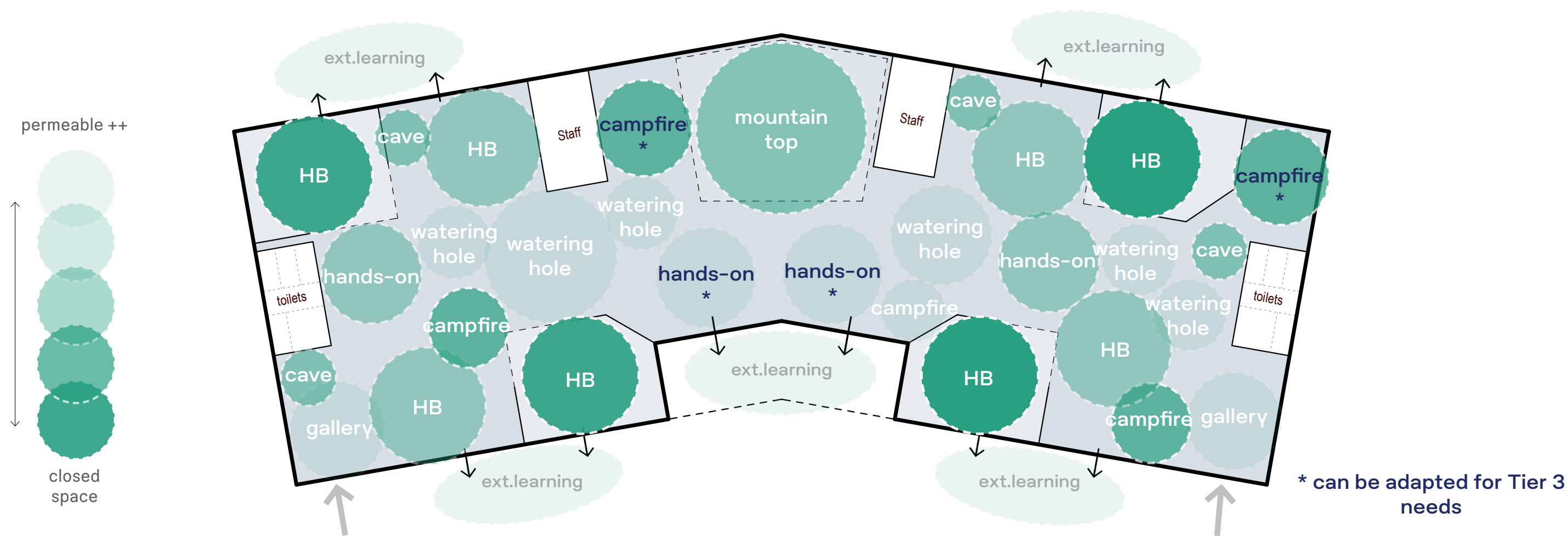
- physically enclosed or permeable + connected
- acoustically separate
- visually connected
- adaptable, comfortable furniture / generous work surfaces
- task specific furniture
- stainless steel bench tops / chemical resistant surfaces
- durable, washable surfaces + flooring
- accessible storage + secure storage
- power / data / wi-fi
- resource storage
- clear circulation
- presentation surface / AV display with good lines of sight
- writable walls

Learning Activities

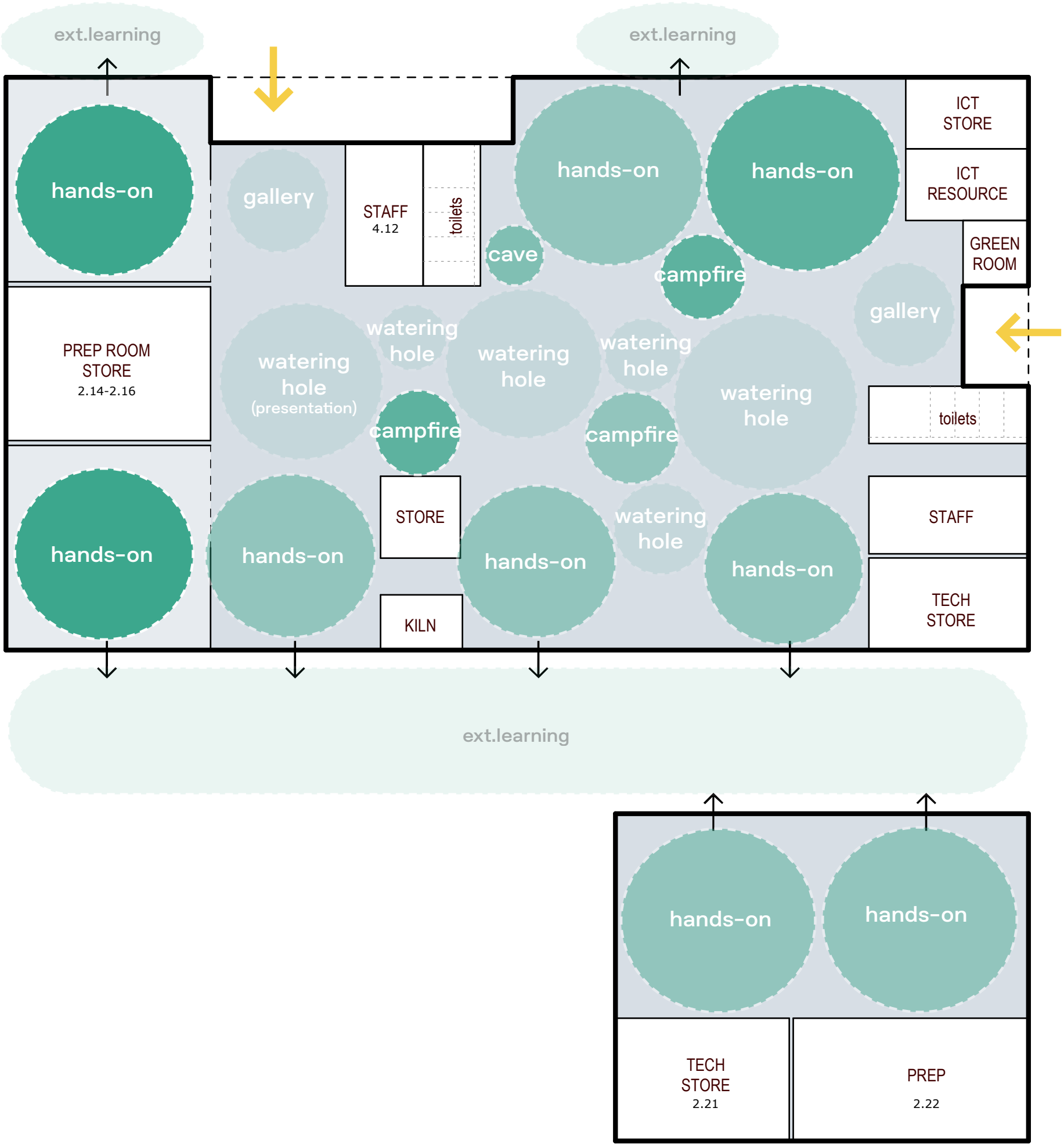
- demonstrate
- Hands on interaction
- Experimentation
- Evaluation
- model
- communicate ideas
- teach explicitly
- students as researchers
- testing
- gaming

Learning Relationships / Group Configurations

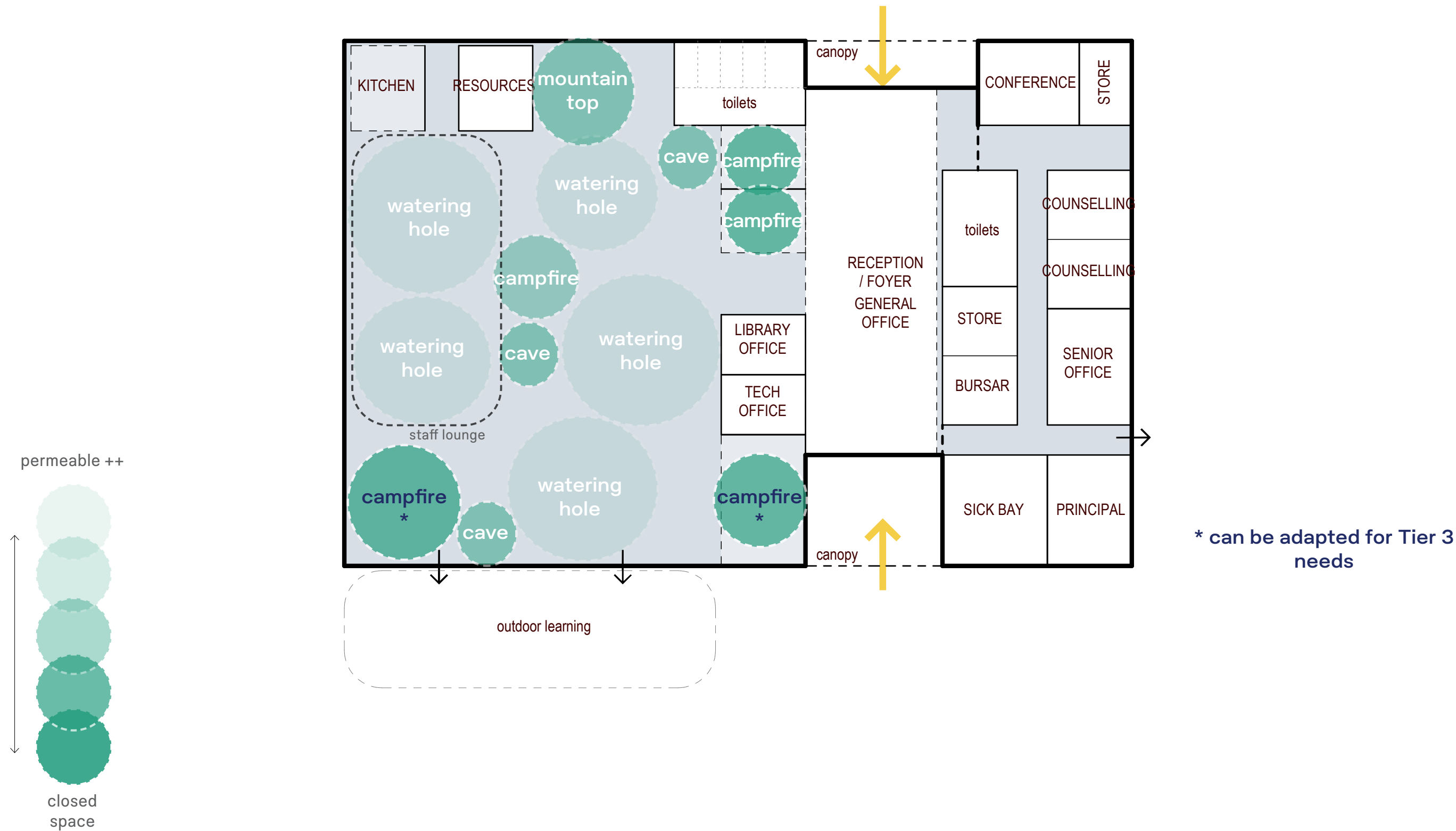


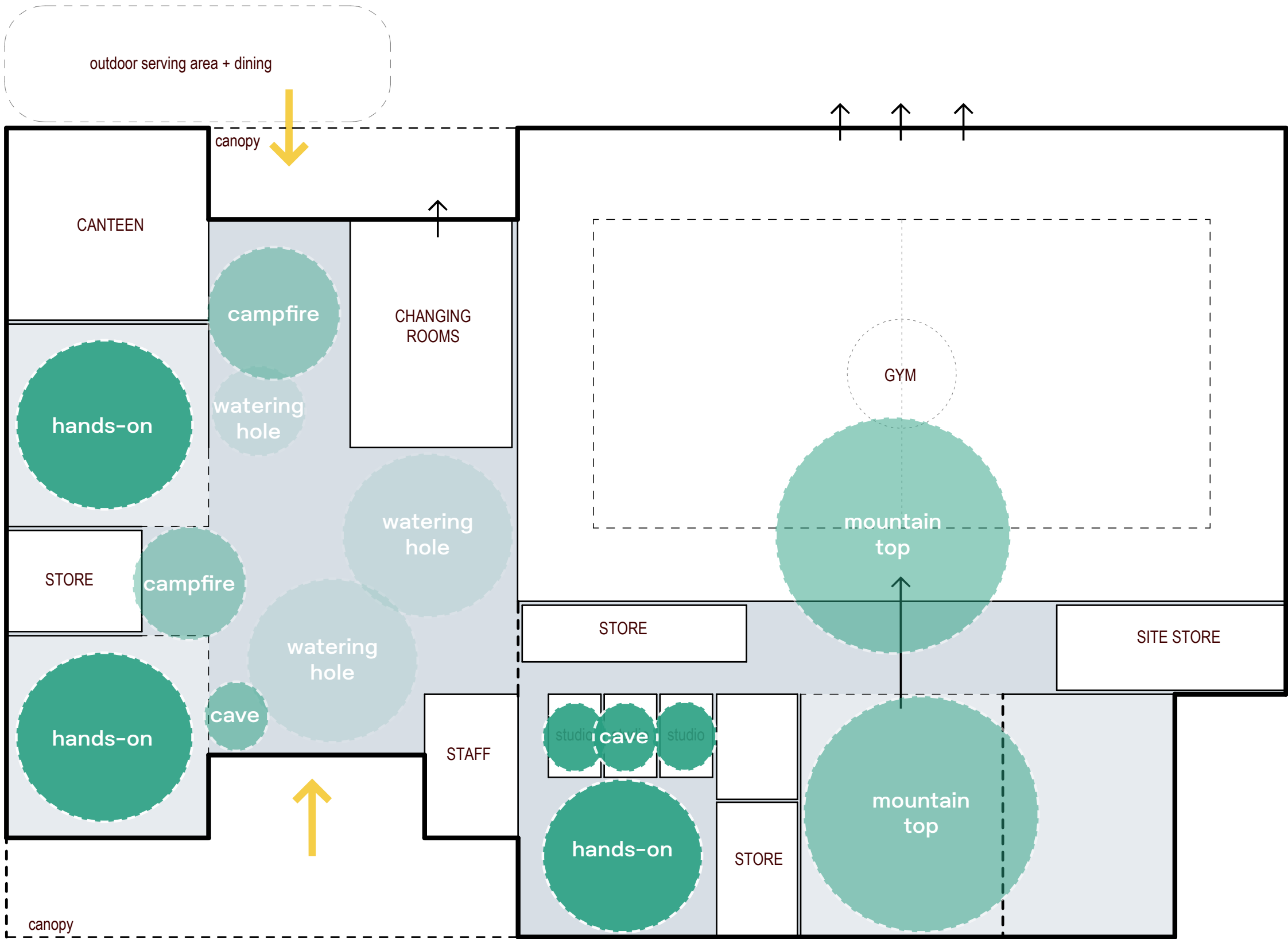


DATS



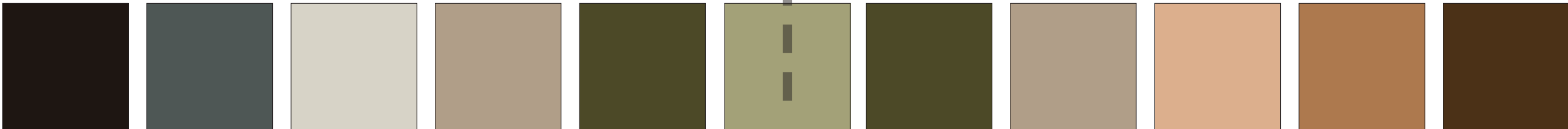
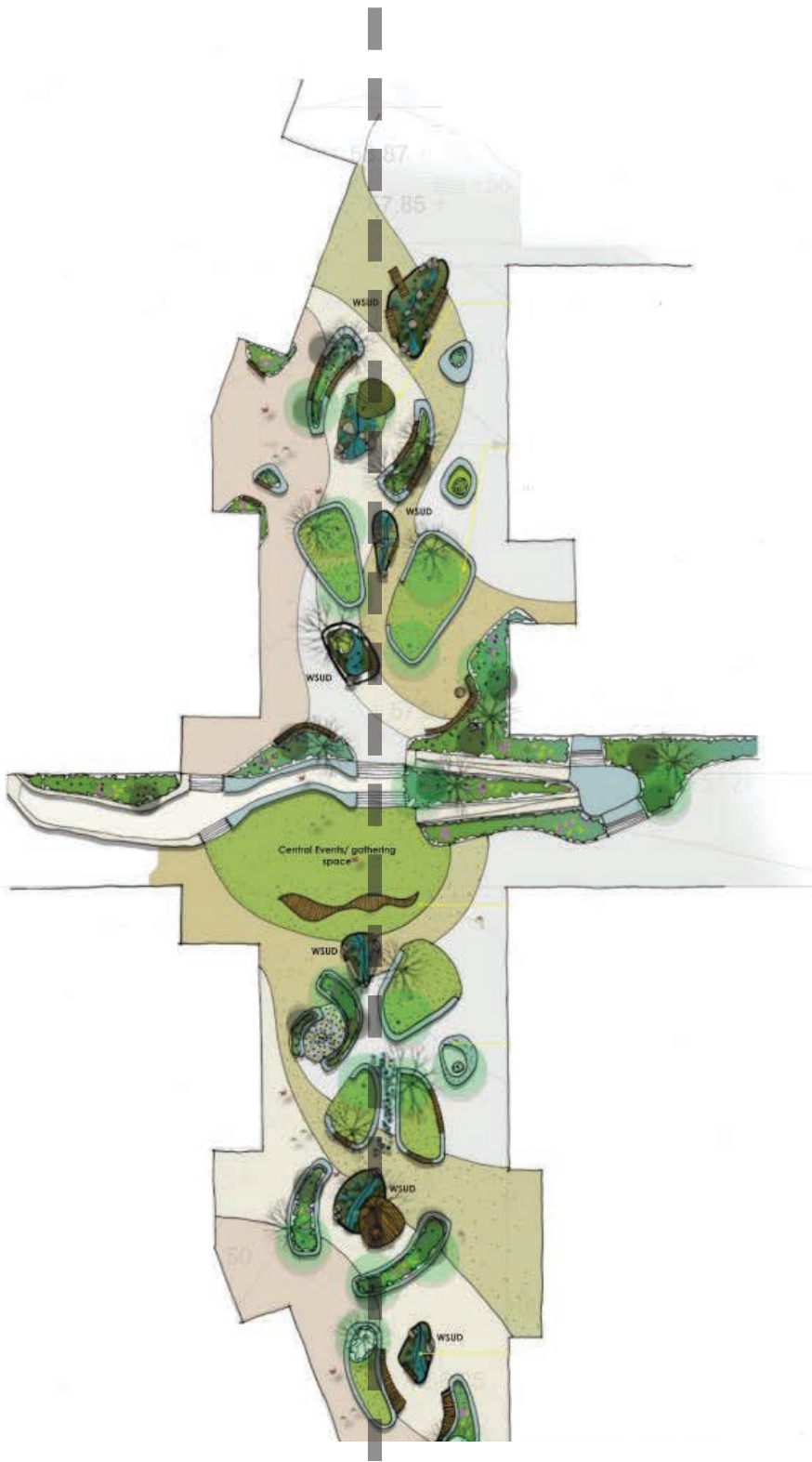
ADMIN





INTERIORS MOOD & FEEL

DESIGN NARRATIVE



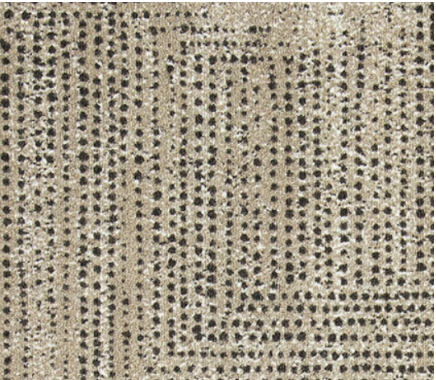
PALETTE TRANSLATION

BIG RIVER | OYSTER BAY

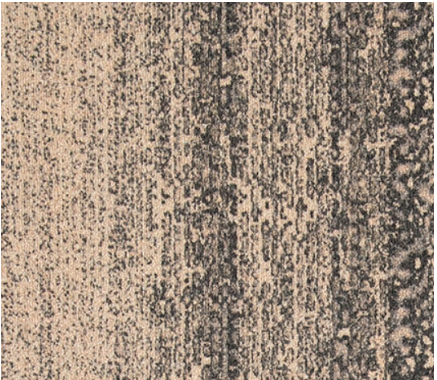
NATURAL TIMBER



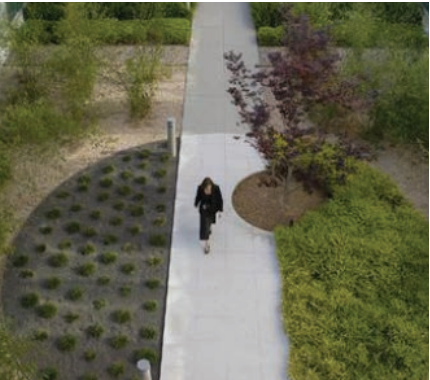
CARPET TILE



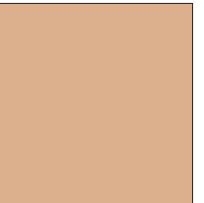
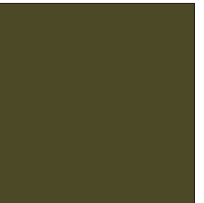
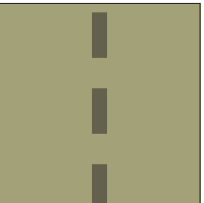
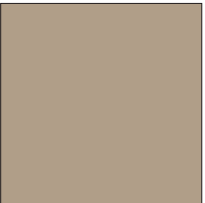
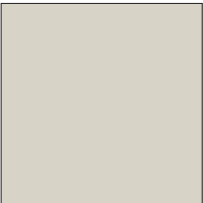
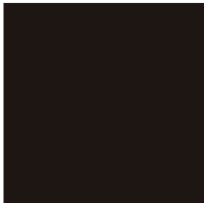
CARPET TILE



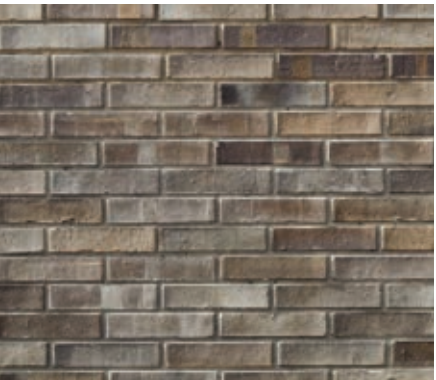
LANDSCAPE



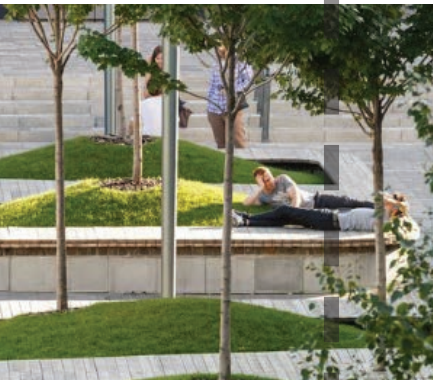
BRICK FACADE



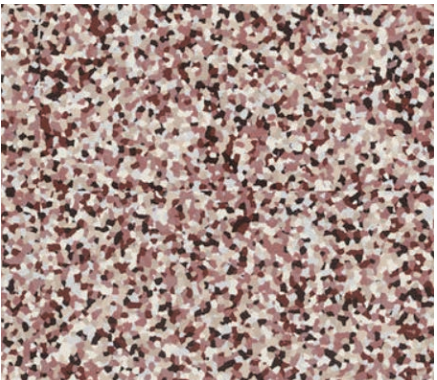
CARPET / PINBOARD



BRICK FACADE



LANDSCAPE



VINYL



LAMINATE / FLOORING

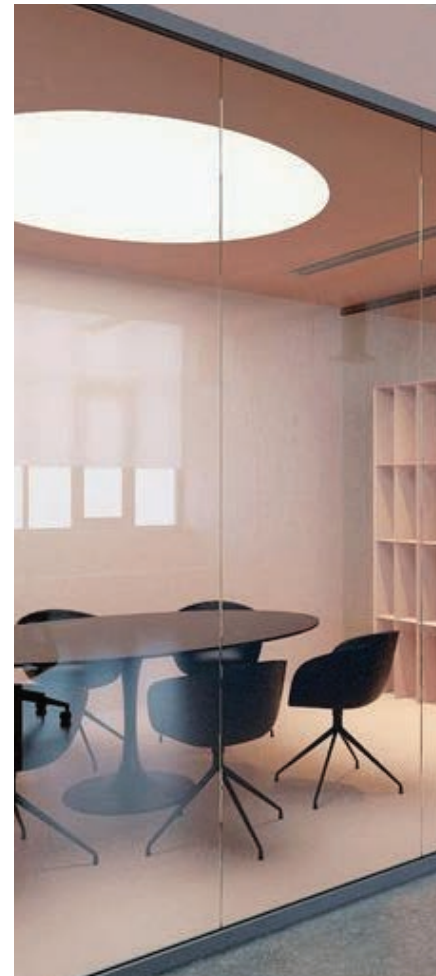


CONCRETE AGGREGATE



LAMINATE / PAINT

CAMPFIRE



A COLLECTION OF PRIVATE AND SEMI PRIVATE MEETING AND COLLABORATION SPACES. VARYING VOLUMES CREATE INTIMACY AND INFLUENCE PEDAGOGY. CONNECTION TO THE WIDER MATERIAL PALETTE AND DEFINED BY TEXTURE AND MOOD.

CAVE



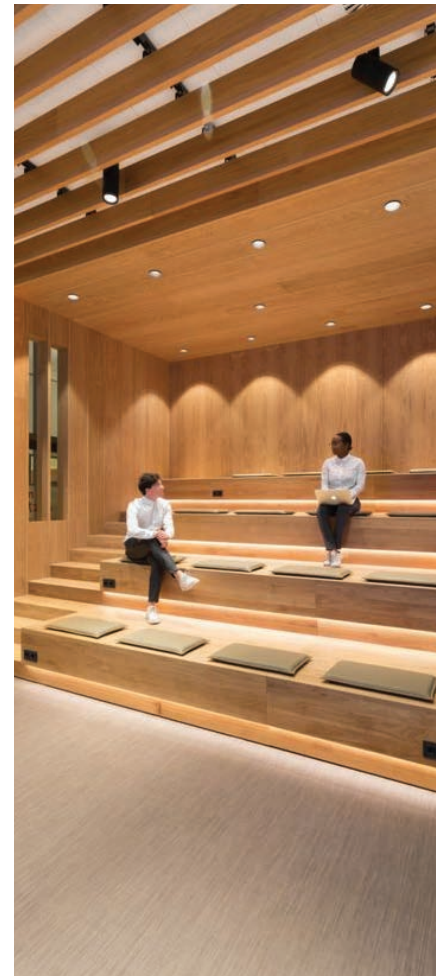
MOMENTS OF RETREAT WITHIN THE LARGER LEARNING LANDSCAPE. INTIMATE AND PRIVATE MOMENTS FOR SMALL GROUP AND SELF GUIDED LEARNING. A STRONG FOCUS ON ACOUSTIC PROPERTIES AND MATERIAL TEXTURES.

WATERING HOLE



STUDENT INITIATED LEARNING ENVIRONMENTS
MAXIMISING POTENTIAL FOR COLLABORATION AND
CO-CREATION. ORGANIC AND FLEXIBLE PEDAGOGY.
CONNECTION TO MORE INTIMATE LEARNING
SETTINGS AND SHARED RESOURCES.

MOUNTAIN TOP



SETTINGS FOR FOCUSED PRESENTATION AND LEARNING. ALLOWING FOR A CENTRAL PRESENTATION OR PERFORMANCE WITHIN THE LARGER LANDSCAPE. CATERING FOR SMALL TO LARGE GROUPS AND COMMUNITY ENGAGEMENT.

LEARNING GALLERY



SPACES FOR ENGAGEMENT AND INTERACTION WITH LEARNING ARTEFACTS. DISPLAY OF STUDENT WORK AND RESOURCES. AN EXTENSIONS OF COLLABORATIVE AND CO-CREATING SPACES.

HANDS-ON / MAKERS SPACE



ENGAGING SPACES FOR HANDS ON LEARNING. DIGITAL AND PHYSICAL PEDAGOGY. ROBUST AND TAILORED SPACES FOR PLAY BASED ACTIVITIES.

INTERIOR PLANS

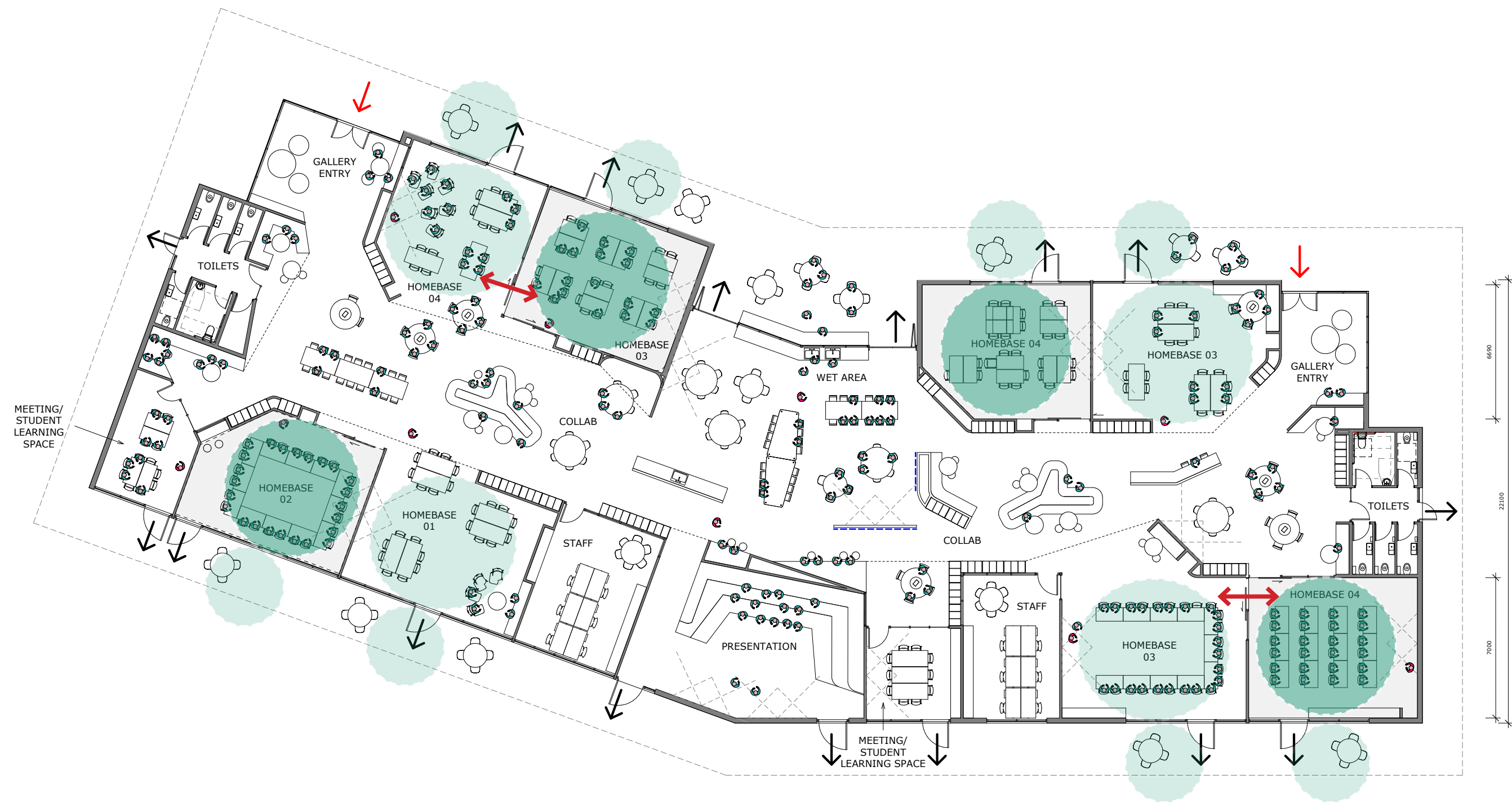
LEARNING COMMUNITIES

Circulation



LEARNING COMMUNITIES

Home Bases



LEARNING COMMUNITIES

Watering Holes - Informal gathering spaces



LEARNING COMMUNITIES

Hands-On



LEARNING COMMUNITIES

Campfires - Small meeting spaces



LEARNING COMMUNITIES

Caves - Quiet Spaces

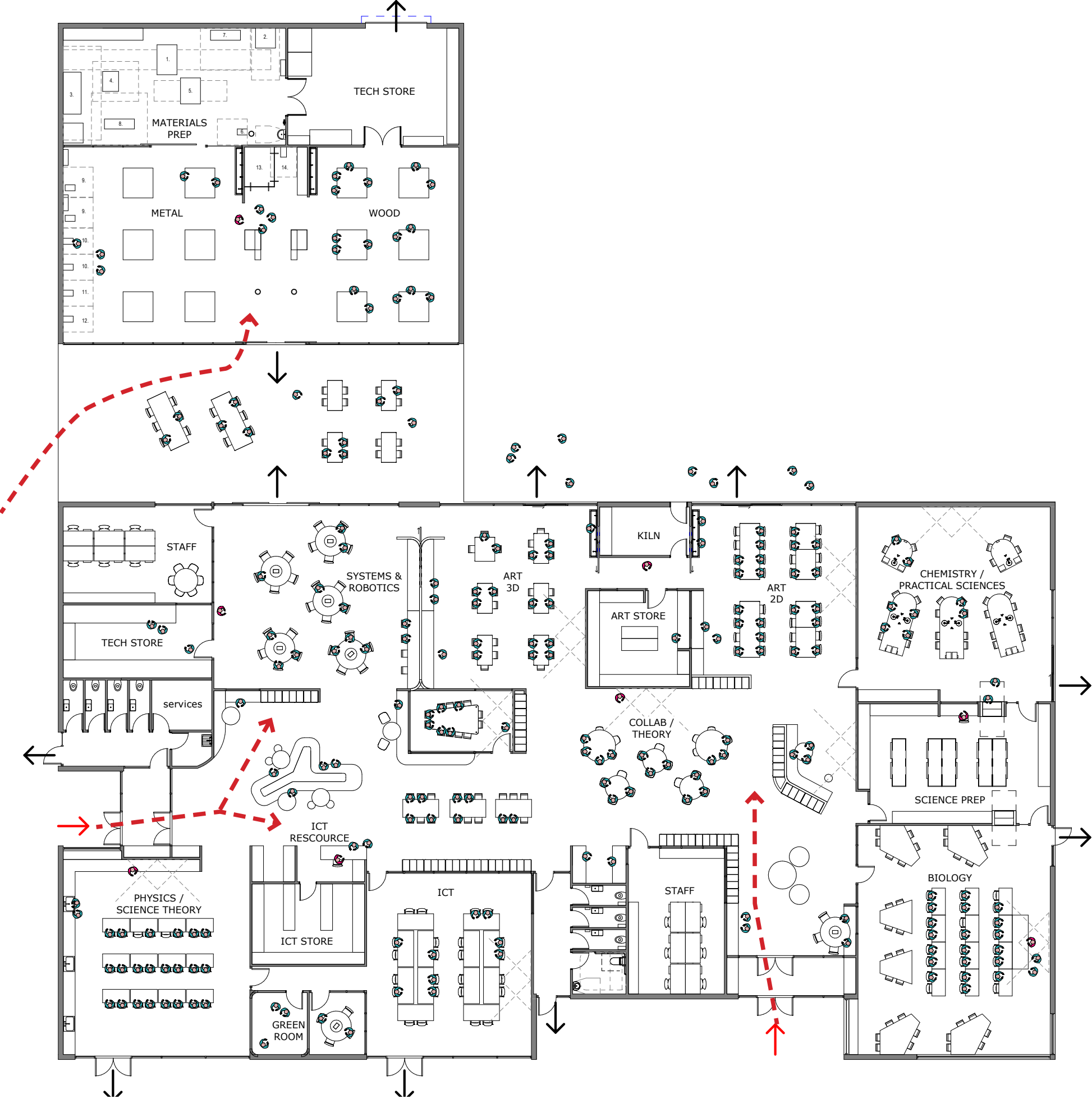


LEARNING COMMUNITIES

Lockers & tablet charging stations



DATS
Circulation



DATS
Home Bases

Hands-On -
Maker Spaces

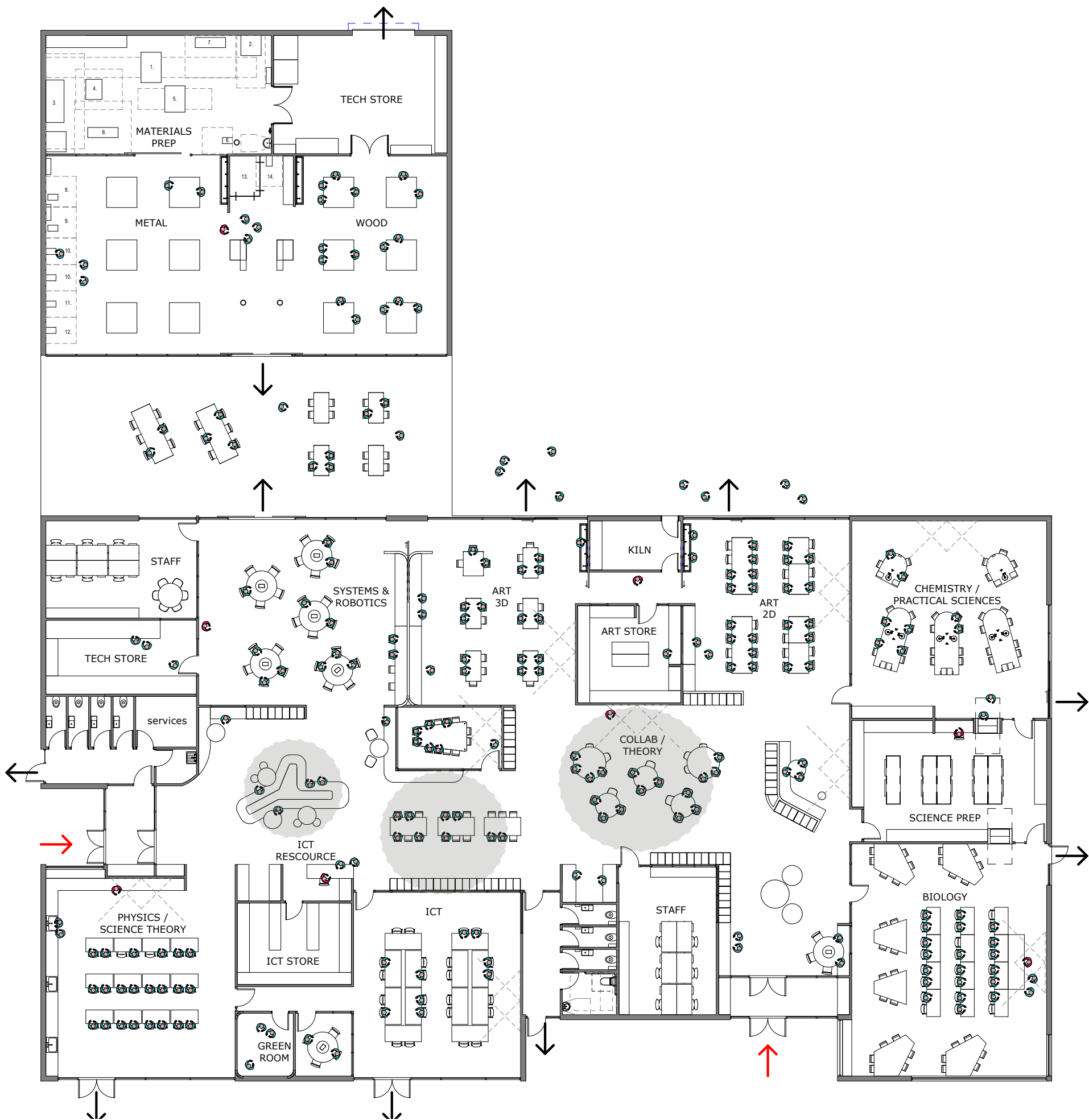


11. INVESTIGATION LAB - HANDS-ON
Science Lab Options



DATS

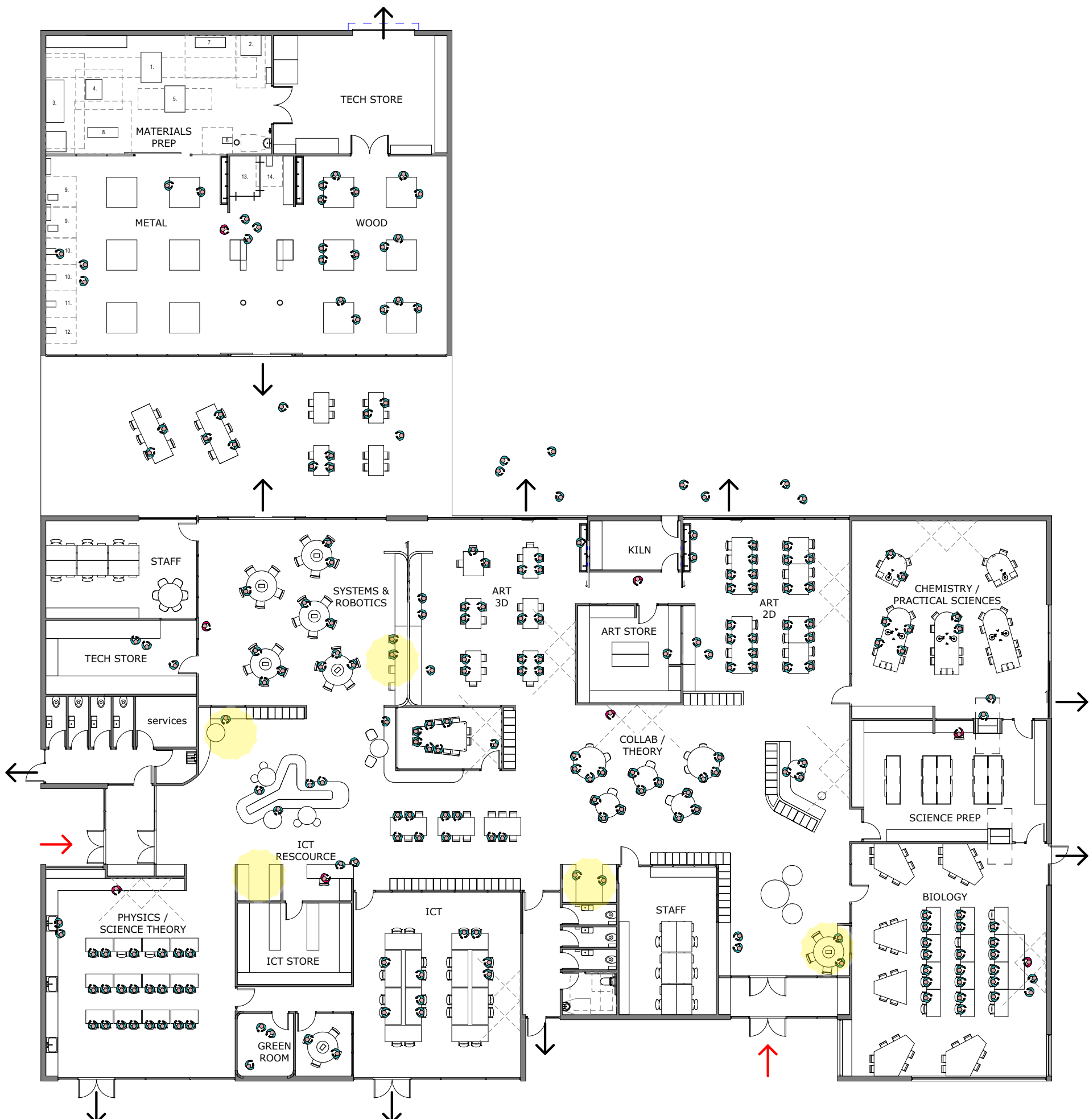
Watering Holes -
Informal gathering
spaces



DATS
Campfires -
Small meeting spaces



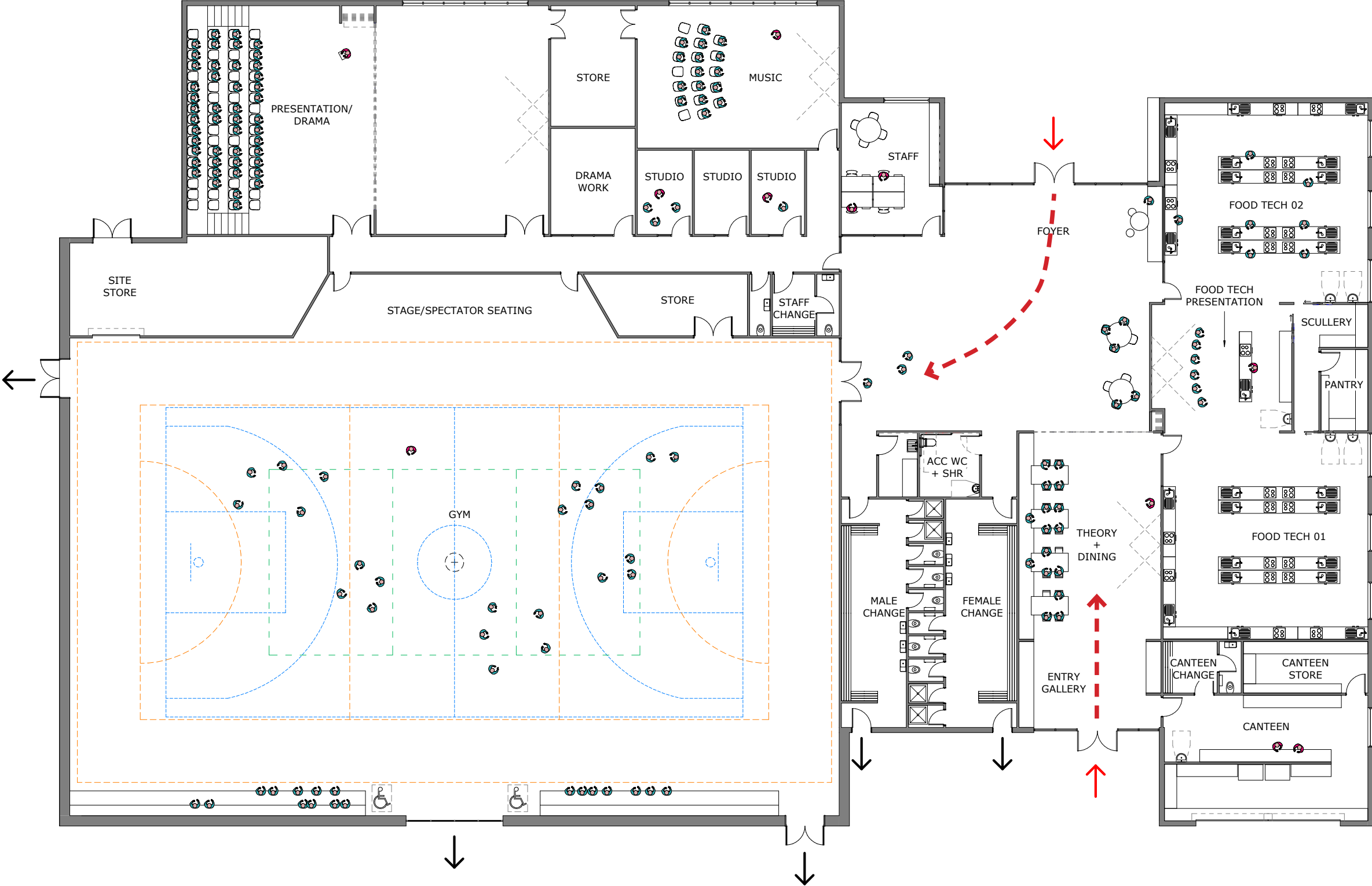
DATS
Caves - Quiet Spaces



DATS
Lockers

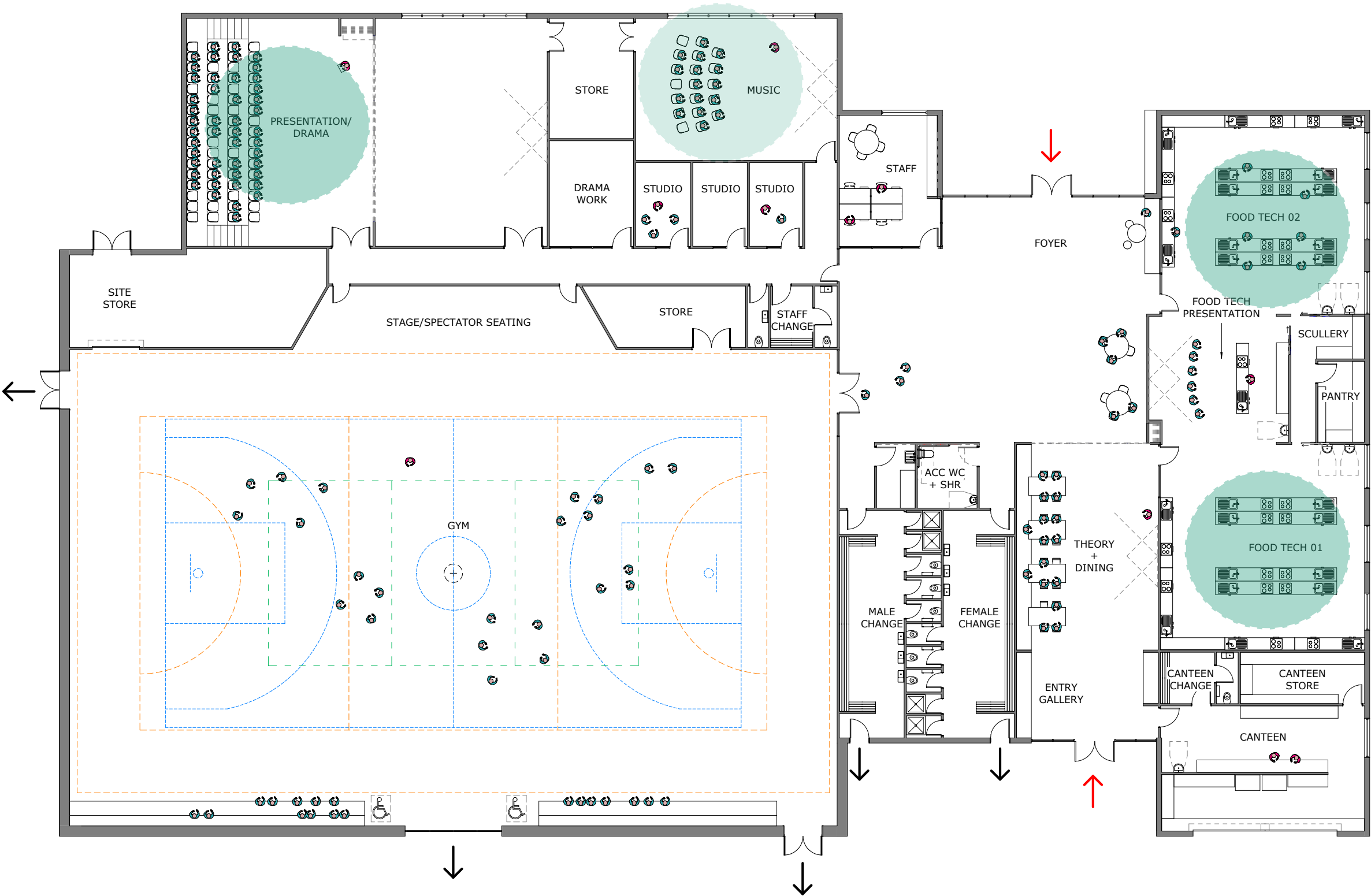


PAPE
Circulation



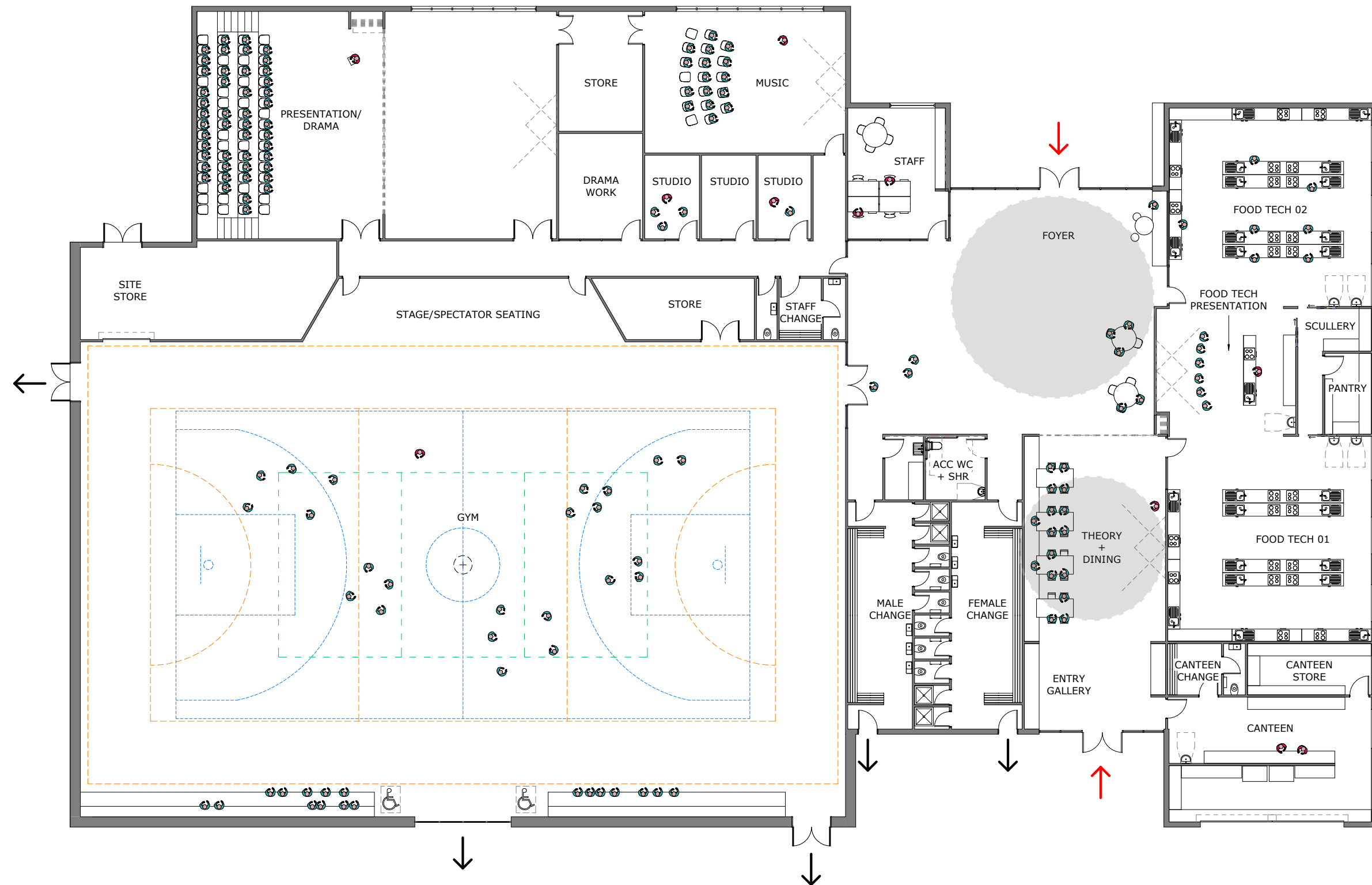
PAPE

Home Base + Speciality Spaces



PAPE

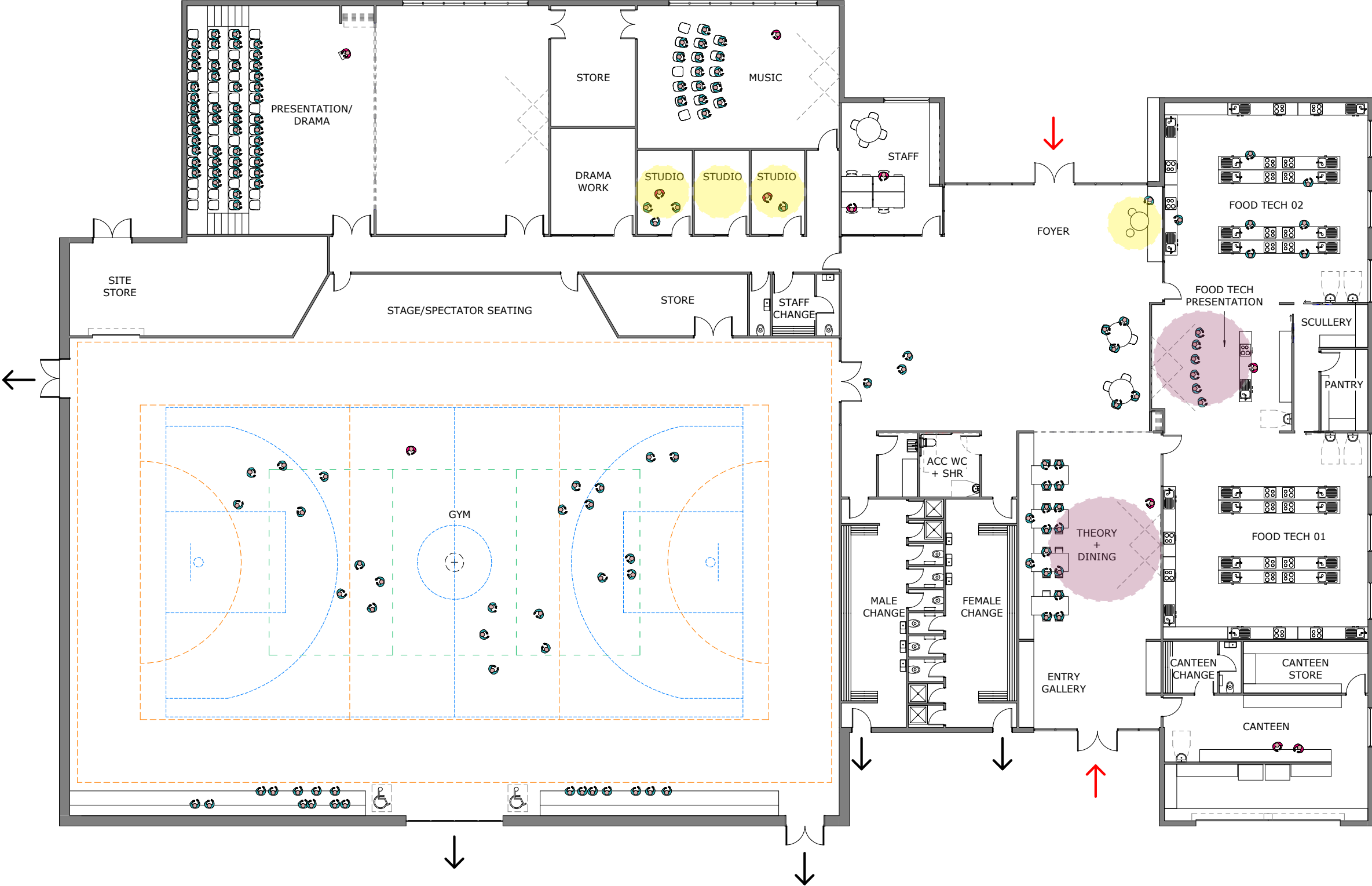
Watering Holes - Informal gathering spaces



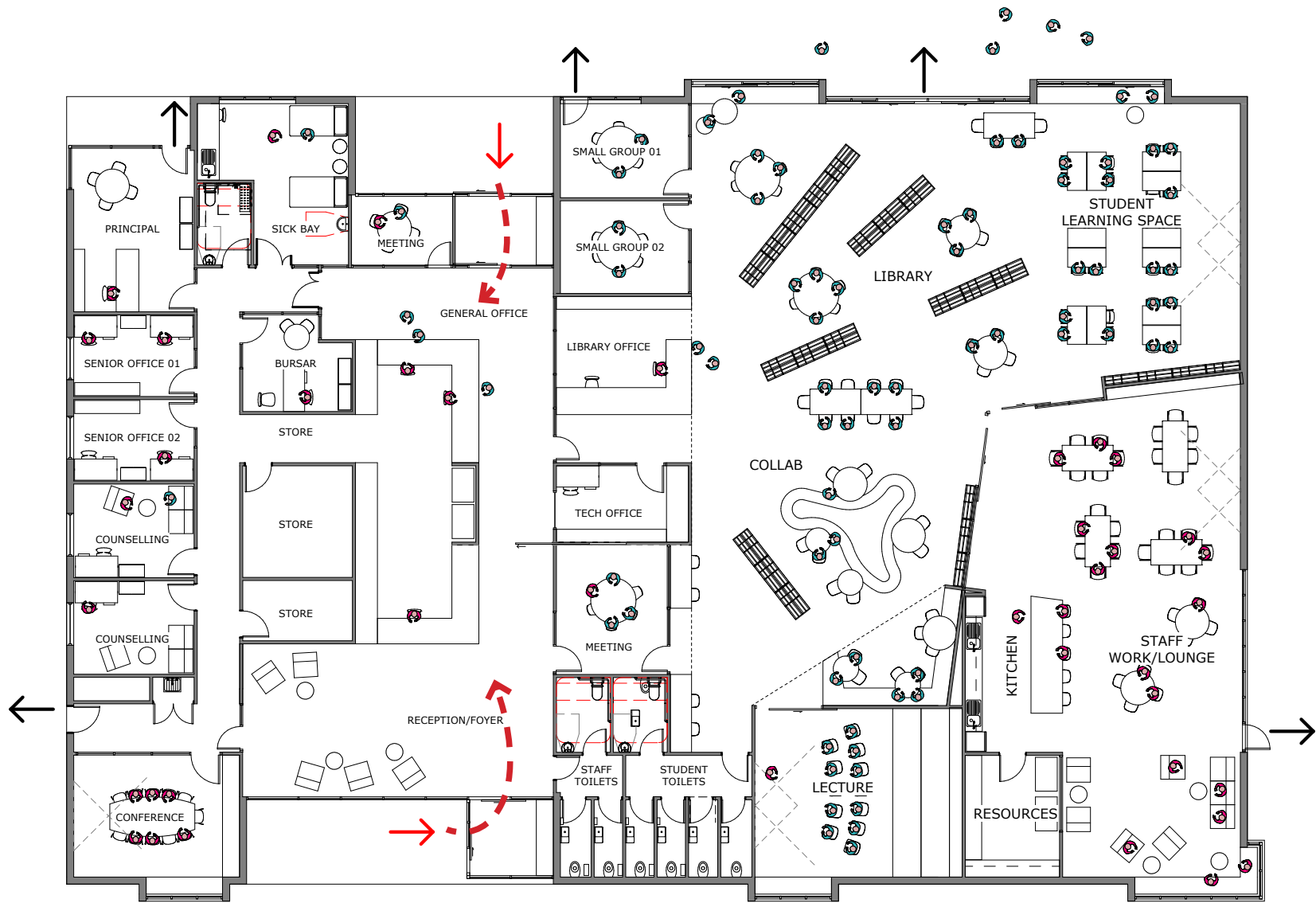
PAPE

Campfires - Small meeting spaces

Caves - Quiet Spaces

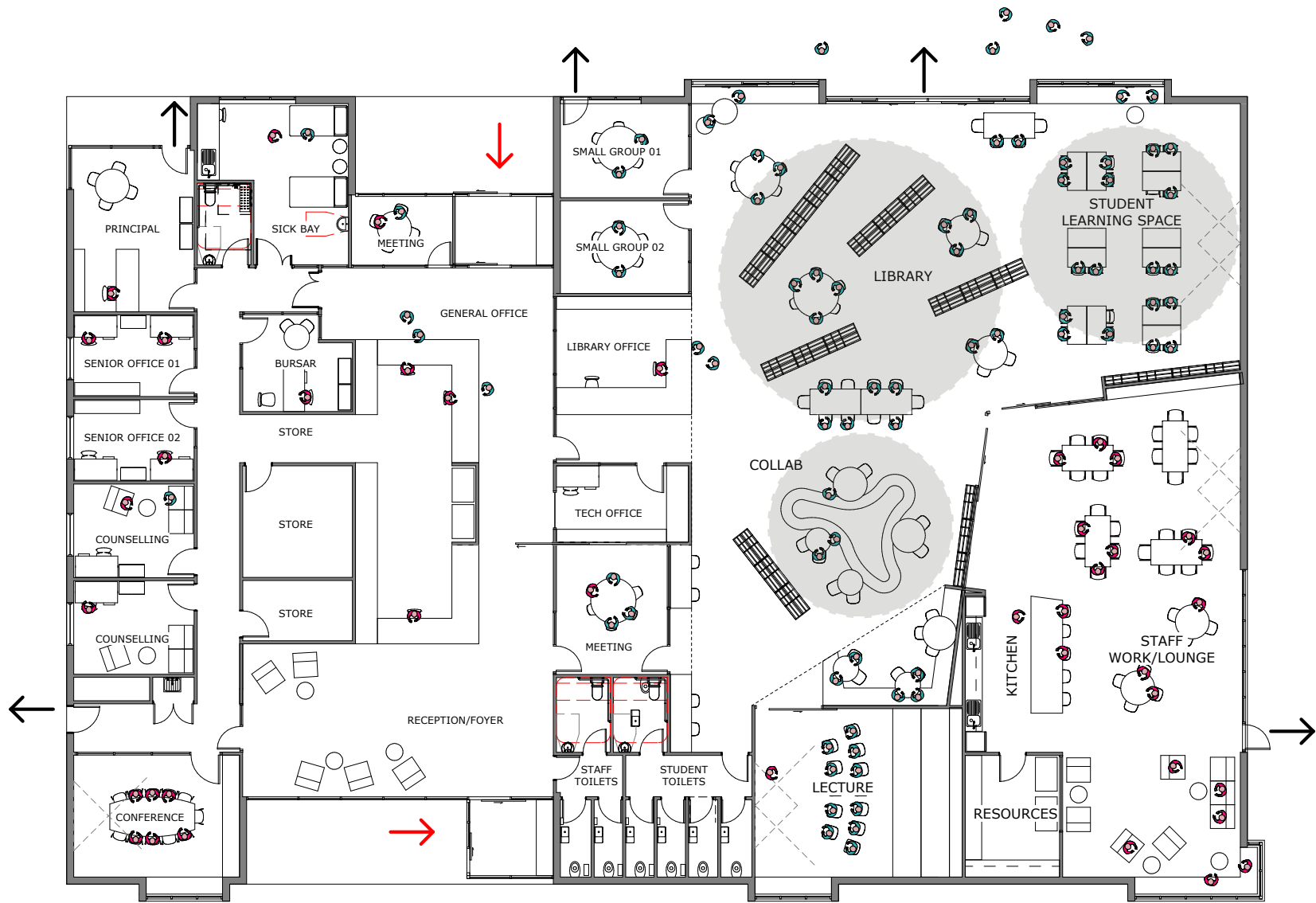


ADMIN
Circulation



ADMIN

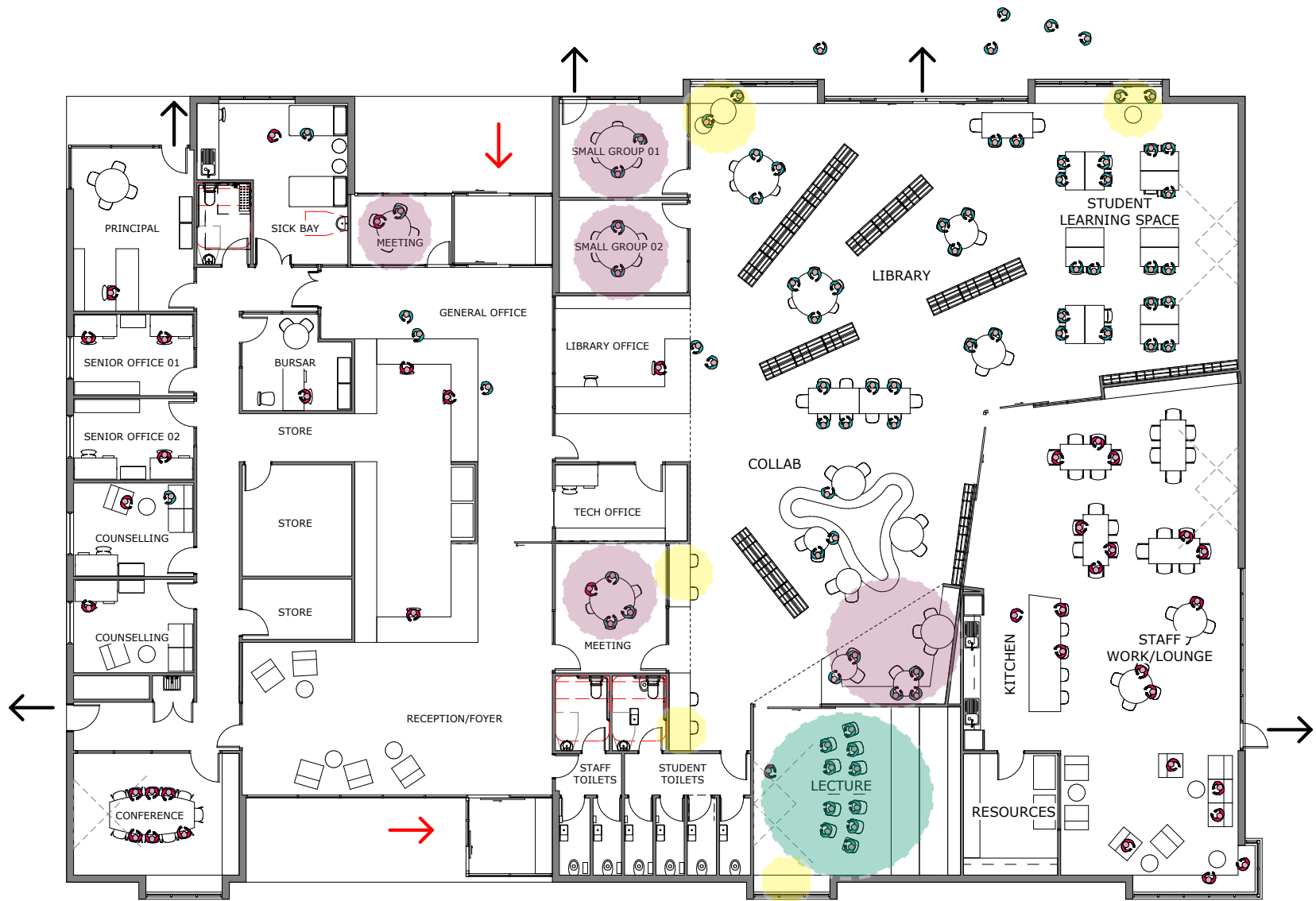
Watering Holes – Informal gathering spaces



ADMIN

Campfires - Small meeting spaces

Caves - Quiet Spaces



Let's Talk

Thank you for your time and your participation.

We look forward to developing, expanding, and realising
your visions for your new Brighton High School



JAWSARCHITECTS

K 2 L D

